

IL12 Monoclonal Antibody

CAB23157

Description

This IL12 Monoclonal Antibody is supplied as a kit for advanced applications. The kit includes Bradford Reagent to quantify total protein concentration for accurate sample normalization (Optional).

Product Information

SKU:	CAB23157
Contents:	20 μ L, 100 μ L Bradford Reagent: 1 vial (2ml)
Category:	Monoclonal Antibody
Synonyms:	CLMF, NKSF, CLMF2, IMD28, IMD29, NKSF2, IL-12B, IL12
Clone:	ARC60328
Applications:	WB ELISA
Conjugation:	Unconjugated
Reactivity:	Human

Antibody Data

Gene ID:	3593
Uniprot:	AB_3678805
Host Species:	Rabbit
Purification:	Affinity purification
Observed MW:	42kDa
Calculated MW:	37kDa

Preparation & Storage

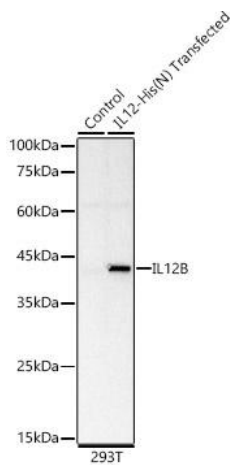
Storage: Store at -20°C. Avoid freeze / thaw cycles. Buffer: PBS containing 50% glycerol and 0.05% BSA, preserved with proclin300 or sodium azide (as specified on the Certificate of Analysis), pH 7.3.
Store Bradford Reagent at Room Temperature for 1 Year.

Positive Sample: 293T-IL12-His(N)

Recommended Dilutions:	WB	1:1000 - 1:5000
	ELISA	Recommended starting concentration is 1 µg/mL. Please optimize the concentration based on your specific assay requirements.

Protein Quantification (Optional): To quantify total protein levels, use the Bradford Reagent included in this kit. Visit <https://www.assaygenie.com/bradford-protein-assay-protocol/> to view the full protocol

Validation Data



Western blot analysis of lysates from 293T--His(N), using Rabbit mAb (CAB23157) at 1:2000 dilution. Secondary antibody: HRP-conjugated Goat anti-Rabbit IgG (H+L) (CABS014) at 1:10000 dilution. Lysates/proteins: 25µg per lane. Blocking buffer: 3% nonfat dry milk in TBST. Detection: ECL Basic Kit (AbGn00020). Exposure time: 180s.