

MDM2 Monoclonal Antibody

CAB23388

Description

This MDM2 Monoclonal Antibody is supplied as a kit for advanced applications. The kit includes Bradford Reagent to quantify total protein concentration for accurate sample normalization (Optional).

Product Information

SKU:	CAB23388
Contents:	20 μ L, 100 μ L Bradford Reagent: 1 vial (2ml)
Category:	Monoclonal Antibody
Synonyms:	HDMX, LSKB, hdm2, ACTFS, MDM2
Clone:	ARC60296
Applications:	WB ELISA
Conjugation:	Unconjugated
Reactivity:	Human

Antibody Data

Gene ID:	4193
Uniprot:	-
Host Species:	Rabbit
Purification:	Affinity purification
Observed MW:	90 kDa (MDM2-FL)/60 kDa (MDM2-A)
Calculated MW:	11kDa/14kDa/24kDa/30kDa/33kDa/35kDa/48kDa/49kDa/55kDa

Preparation & Storage

Storage: Store at -20°C. Avoid freeze / thaw cycles. Buffer: PBS containing 50% glycerol and 0.05% BSA, preserved with proclin300 or sodium azide (as specified on the Certificate of Analysis), pH 7.3.

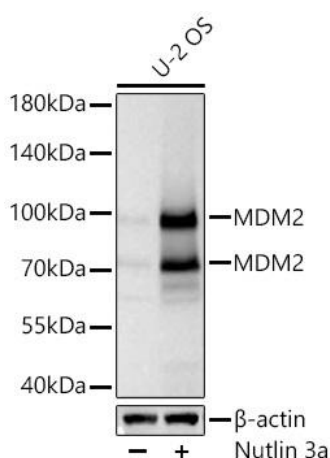
Store Bradford Reagent at Room Temperature for 1 Year.

Positive Sample: U-2 OS treated with Nutlin 3a

Recommended Dilutions:	WB	1:2000 - 1:10000
	ELISA	Recommended starting concentration is 1 µg/mL. Please optimize the concentration based on your specific assay requirements.

Protein Quantification (Optional): To quantify total protein levels, use the Bradford Reagent included in this kit. Visit <https://www.assaygenie.com/bradford-protein-assay-protocol/> to view the full protocol

Validation Data



Western blot analysis of lysates from U-2 OS cells using Rabbit mAb (CAB23388) at 1:5000 dilution incubated at room temperature for 1.5 hours. U-2 OS cells were treated with Nutlin 3a (10 µM) at 37°C for 24 hrs. Secondary antibody: HRP-conjugated Goat anti-Rabbit IgG (H+L) (CABS014) at 1:10000 dilution. Lysates/proteins: 25 µg per lane. Blocking buffer: 3% nonfat dry milk in TBST. Detection: ECL Basic Kit (AbGn00020). Exposure time: 45s.