

Caspase-1 p20 Monoclonal Antibody

CAB23429

Description

This Caspase-1 p20 Monoclonal Antibody is supplied as a kit for advanced applications. The kit includes Bradford Reagent to quantify total protein concentration for accurate sample normalization (Optional).

Product Information

| | |
|----------------------|---|
| SKU: | CAB23429 |
| Contents: | 20 μ L, 100 μ L Bradford Reagent: 1 vial (2ml) |
| Category: | Monoclonal Antibody |
| Synonyms: | ICE, P45, IL1BC, Caspase-1 p20 |
| Clone: | ARC60705 |
| Applications: | WB ELISA |
| Conjugation: | Unconjugated |
| Reactivity: | Human |

Antibody Data

| | |
|-----------------------|-------------------------------|
| Gene ID: | 834 |
| Uniprot: | - |
| Host Species: | Rabbit |
| Purification: | Affinity purification |
| Observed MW: | 20-25kDa |
| Calculated MW: | 10KDa/29KDa/35KDa/42KDa/45KDa |

Preparation & Storage

Storage: Store at -20°C. Avoid freeze / thaw cycles. Buffer: PBS with 0.09% Sodium azide, 0.05% BSA, 50% glycerol, pH 7.3.

Store Bradford Reagent at Room Temperature for 1 Year.

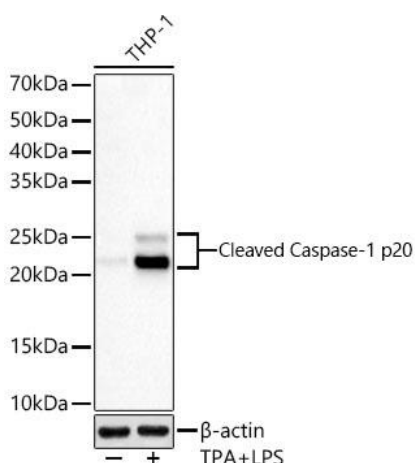
Positive Sample: THP-1 treated with TPA and LPS

Recommended Dilutions:

| | |
|--------------|---|
| WB | 1:2000 - 1:8000 |
| ELISA | Recommended starting concentration is 1 µg/mL. Please optimize the concentration based on your specific assay requirements. |

Protein Quantification (Optional): To quantify total protein levels, use the Bradford Reagent included in this kit. Visit <https://www.assaygenie.com/bradford-protein-assay-protocol/> to view the full protocol

Validation Data



Western blot analysis of lysates from THP-1 cells using Cleaved Caspase-1 p20 Rabbit mAb (CAB23429) at 1:2000 dilution. THP-1 cells were treated with PMA/TPA (80 nM) at 37°C for overnight and LPS (1 µg/ml) at 37°C for 6 hours. Secondary antibody: HRP-conjugated Goat anti-Rabbit IgG (H+L) (CABS014) at 1:10000 dilution. Lysates/proteins: 25µg per lane. Blocking buffer: 3% nonfat dry milk in TBST. Detection: ECL Basic Kit (AbGn00020). Exposure time: 30s.