

Histone H3 Antibody

CAB2348

Description

This Histone H3 Antibody is supplied as a kit for advanced applications. The kit includes Bradford Reagent to quantify total protein concentration for accurate sample normalization (Optional).

Product Information

SKU:	CAB2348
Contents:	20 μ L, 100 μ L Bradford Reagent: 1 vial (2ml)
Category:	Polyclonal Antibody
Synonyms:	H3t, H3.4, H3/g, H3FT, H3C16, HIST3H3, Histone H3
Clone:	-
Applications:	WB IHC-P IP ELISA IF-P
Conjugation:	Unconjugated
Reactivity:	Human, Mouse, Rat, Other (Wide Range Predicted)

Antibody Data

Gene ID:	8290 8350
Uniprot:	AB_2631273
Host Species:	Rabbit
Purification:	Affinity purification
Observed MW:	17 kDa
Calculated MW:	15 kDa

Preparation & Storage

Storage: Store at -20°C. Avoid freeze / thaw cycles. Buffer: PBS containing 50% glycerol, preserved with proclin300 or sodium azide (as specified on the Certificate of Analysis), pH 7.3.

Store Bradford Reagent at Room Temperature for 1 Year.

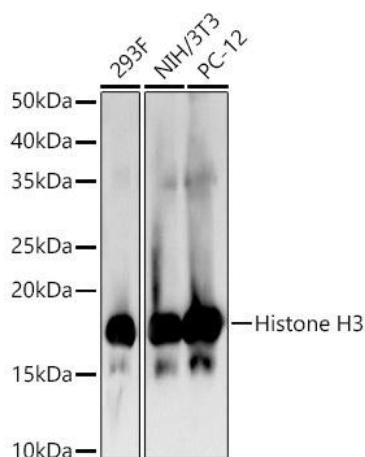
Positive Sample: 293F, NIH/3T3, PC-12

Recommended Dilutions:

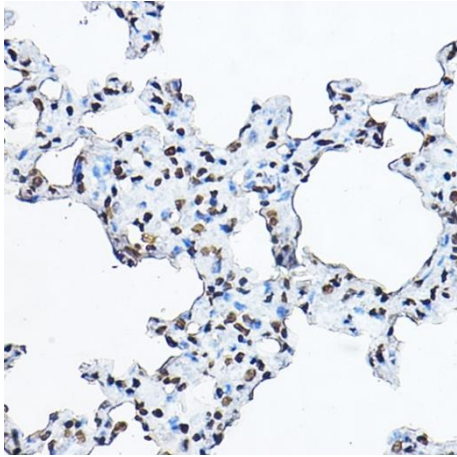
WB	1:2000 - 1:10000
IP	0.5µg-4µg antibody for 200µg-400µg extracts of whole cells
IF-P	1:50 - 1:200
IHC-P	1:50 - 1:200 ChIP 3µg antibody for 5µg-10µg of Chromatin
ELISA	Recommended starting concentration is 1 µg/mL. Please optimize the concentration based on your specific assay requirements.

Protein Quantification (Optional): To quantify total protein levels, use the Bradford Reagent included in this kit. Visit <https://www.assaygenie.com/bradford-protein-assay-protocol/> to view the full protocol

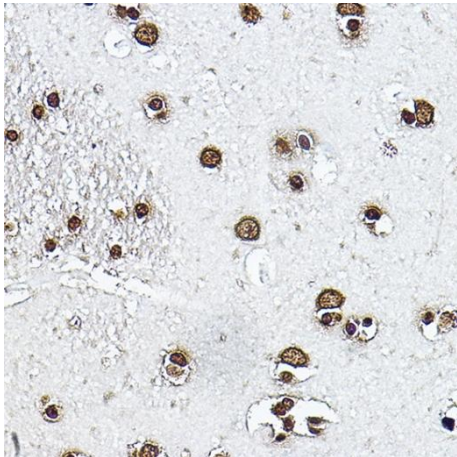
Validation Data



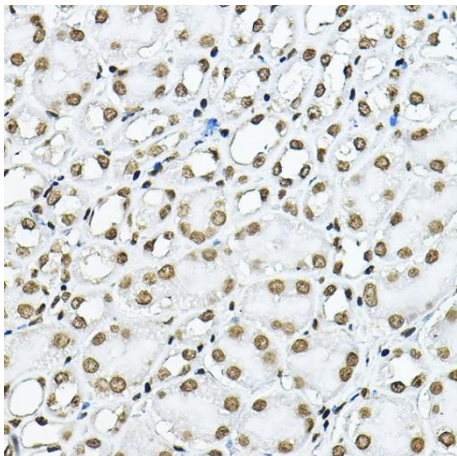
Western blot analysis of various lysates using Histone Rabbit pAb (CAB2348) at 1:10000 dilution. Secondary antibody: HRP-conjugated Goat anti-Rabbit IgG (H+L) (CABS014) at 1:10000 dilution. Lysates / proteins: 25 µg per lane. Blocking buffer: 3 % nonfat dry milk in TBST. Detection: ECL Basic Kit (AbGn00020). Exposure time: 10s.



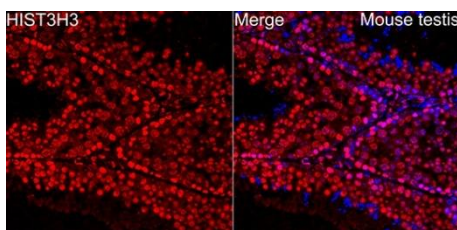
Immunohistochemistry analysis of paraffin-embedded Rat lung using Histone Rabbit pAb (CAB2348) at dilution of 1:100 (40x lens). High pressure antigen retrieval performed with 0.01M Citrate buffer (pH 6.0) prior to IHC staining.



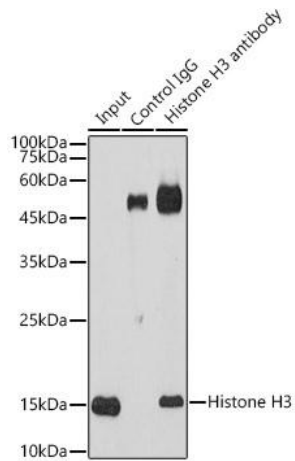
Immunohistochemistry analysis of paraffin-embedded Human brain using Histone Rabbit pAb (CAB2348) at dilution of 1:100 (40x lens). High pressure antigen retrieval performed with 0.01M Citrate buffer (pH 6.0) prior to IHC staining.



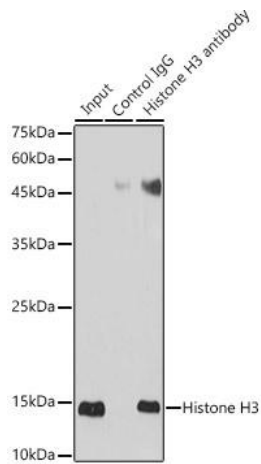
Immunohistochemistry analysis of paraffin-embedded Mouse kidney using Histone Rabbit pAb (CAB2348) at dilution of 1:100 (40x lens). High pressure antigen retrieval performed with 0.01M Citrate buffer (pH 6.0) prior to IHC staining.



Perform high pressure antigen retrieval with 10 mM citrate buffer pH 6.0 before commencing with IF staining protocol. Immunofluorescence analysis of paraffin-embedded mouse testis using Histone Rabbit pAb (CAB2348) at dilution of 1:200 (40x lens). Secondary antibody: Cy3-conjugated Goat anti-Rabbit IgG (H+L) (CABS007) at 1:500 dilution. Blue: DAPI for nuclear staining.



Immunoprecipitation analysis of 600 μ g extracts of HeLa cells using 10 μ g Histone antibody (CAB2348). Western blot was performed from the immunoprecipitate using Histone antibody (CAB2348) at a dilution of 1:30000.



Immunoprecipitation analysis of 600 μ g extracts of HeLa cells using 10 μ g Histone antibody (CAB2348). Western blot was performed from the immunoprecipitate using Histone antibody (CAB2348) at a dilution of 1:30000.