

DiMethyl-Histone H3-K4 Antibody

CAB2356

Description

This DiMethyl-Histone H3-K4 Antibody is supplied as a kit for advanced applications. The kit includes Bradford Reagent to quantify total protein concentration for accurate sample normalization (Optional).

Product Information

SKU:	CAB2356
Contents:	20 μ L, 100 μ L Bradford Reagent: 1 vial (2ml)
Category:	Polyclonal Antibody
Synonyms:	H3t, H3.4, H3/g, H3FT, H3C16, HIST3H3, DiMethyl-Histone H3-K4
Clone:	-
Applications:	WB IHC-P IF/ICC ChIP ChIP-seq ELISA
Conjugation:	Unconjugated
Reactivity:	Human, Mouse, Rat, Other (Wide Range Predicted)

Antibody Data

Gene ID:	8290 8350
Uniprot:	AB_2764316
Host Species:	Rabbit
Purification:	Affinity purification
Observed MW:	17 kDa
Calculated MW:	15 kDa

Preparation & Storage

Storage: Store at -20°C. Avoid freeze / thaw cycles. Buffer: PBS containing 50% glycerol, preserved with proclin300 or sodium azide (as specified on the Certificate of Analysis), pH 7.3.

Store Bradford Reagent at Room Temperature for 1 Year.

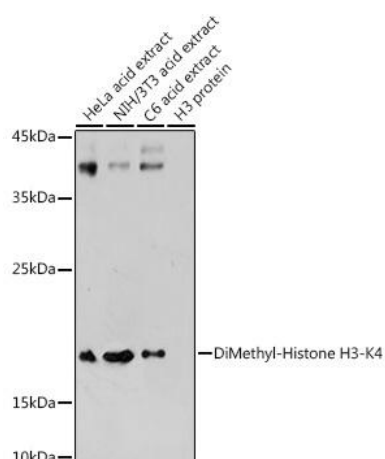
Positive Sample: HeLa, NIH/3T3, C6

Recommended Dilutions:

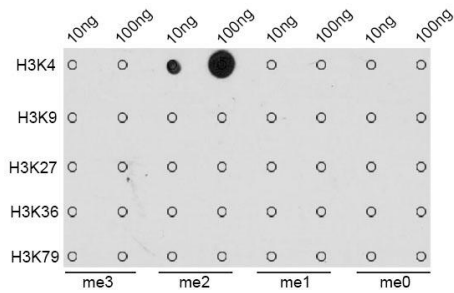
WB	1:500 - 1:1000
IHC-P	1:50 - 1:200
IF/ICC	1:50 - 1:200
ELISA	Recommended starting concentration is 1 µg/mL. Please optimize the concentration based on your specific assay requirements. ChIP 5.5µg antibody for 5µg-10µg of Chromatin ChIP-seq 1:50 - 1:200

Protein Quantification (Optional): To quantify total protein levels, use the Bradford Reagent included in this kit. Visit <https://www.assaygenie.com/bradford-protein-assay-protocol/> to view the full protocol

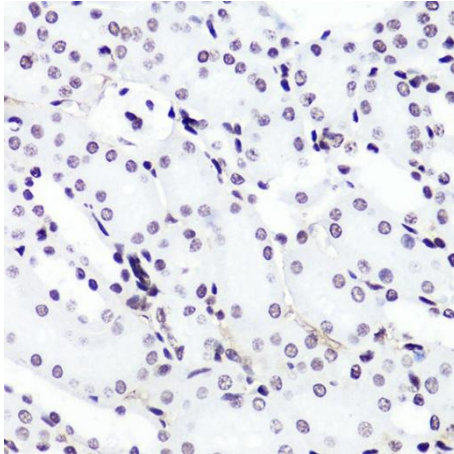
Validation Data



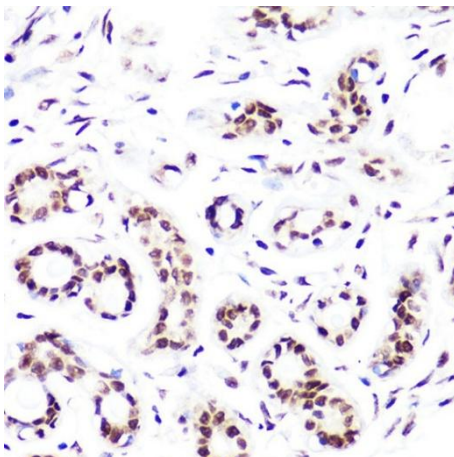
Western blot analysis of various lysates using DiMethyl-Histone - Rabbit pAb (CAB2356) at 1:1000 dilution. Secondary antibody: HRP-conjugated Goat anti-Rabbit IgG (H+L) (CABS014) at 1:10000 dilution. Lysates/proteins: 25µg per lane. Blocking buffer: 3% nonfat dry milk in TBST. Detection: ECL Basic Kit (AbGn00020). Exposure time: 1s.



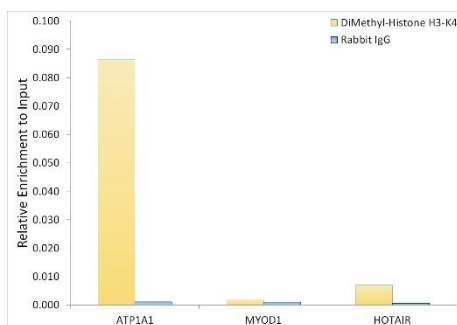
Dot-blot analysis of all sorts of methylation peptides using DiMethyl-Histone - antibody (CAB2356).



Immunohistochemistry analysis of paraffin-embedded Mouse kidney using DiMethyl-Histone - Rabbit pAb (CAB2356) at dilution of 1:100 (40x lens). Microwave antigen retrieval performed with 0.01M PBS Buffer (pH 7.2) prior to IHC staining.



Immunohistochemistry analysis of paraffin-embedded Human breast using DiMethyl-Histone - Rabbit pAb (CAB2356) at dilution of 1:100 (40x lens). Microwave antigen retrieval performed with 0.01M PBS Buffer (pH 7.2) prior to IHC staining.



Chromatin immunoprecipitation was performed with 10 µg of cross-linked chromatin from HeLa cells, using 5.5 µg of DiMethyl-Histone - Rabbit pAb (CAB2356) and Rabbit IgG isotype control (CABC042). The enrichment of immunoprecipitated DNA at different genomic loci was examined by quantitative PCR. The histogram compares the ratio of the immunoprecipitated DNA to the input at given loci.