

MonoMethyl-Histone H3-K27 Antibody

CAB2361

Description

This MonoMethyl-Histone H3-K27 Antibody is supplied as a kit for advanced applications. The kit includes Bradford Reagent to quantify total protein concentration for accurate sample normalization (Optional).

Product Information

SKU:	CAB2361
Contents:	20 μ L, 100 μ L Bradford Reagent: 1 vial (2ml)
Category:	Polyclonal Antibody
Synonyms:	H3/A, H3C2, H3C3, H3C4, H3C6, H3C7, H3C8, H3FA, H3C10, H3C11, H3C12, HIST1H3A, MonoMethyl-Histone H3-K27
Clone:	-
Applications:	WB IHC-P IF/ICC ChIP ELISA DB
Conjugation:	Unconjugated
Reactivity:	Human, Mouse, Rat, Other (Wide Range Predicted)

Antibody Data

Gene ID:	8290 8350
Uniprot:	AB_2764321
Host Species:	Rabbit
Purification:	Affinity purification
Observed MW:	17 kDa
Calculated MW:	15 kDa

Preparation & Storage

Storage: Store at -20°C. Avoid freeze / thaw cycles. Buffer: PBS containing 50% glycerol, preserved with proclin300 or sodium azide (as specified on the Certificate of Analysis), pH 7.3.

Store Bradford Reagent at Room Temperature for 1 Year.

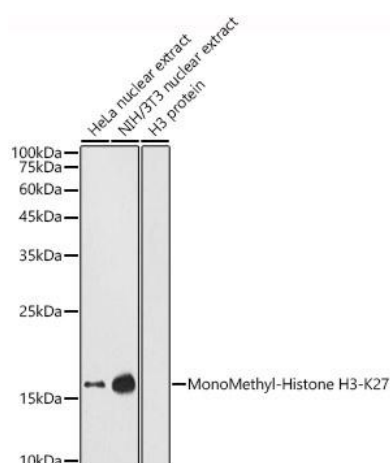
Positive Sample: HeLa acid extract, NIH/3T3 acid extract

Recommended Dilutions:

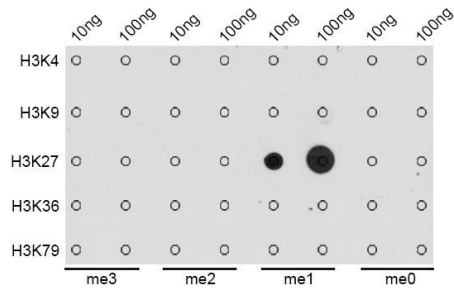
WB	1:500 - 1:5000
IF/ICC	1:50 - 1:200
IHC-P	1:50 - 1:200
DB	1:500 - 1:2000 ChIP 5 µg antibody for 5 µg-10 µg of Chromatin
ELISA	Recommended starting concentration is 1 µg/mL. Please optimize the concentration based on your specific assay requirements.

Protein Quantification (Optional): To quantify total protein levels, use the Bradford Reagent included in this kit. Visit <https://www.assaygenie.com/bradford-protein-assay-protocol/> to view the full protocol

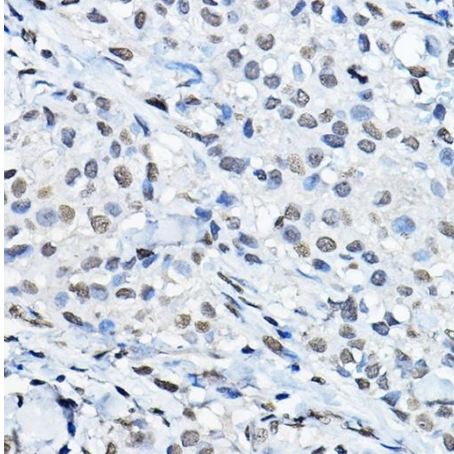
Validation Data



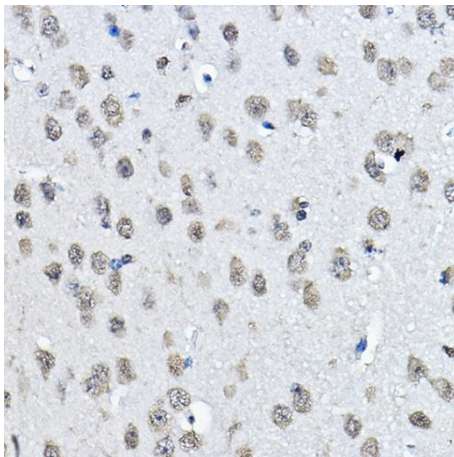
Western blot analysis of various lysates using MonoMethyl-Histone - Rabbit pAb (CAB2361) at 1:1000 dilution. Secondary antibody: HRP-conjugated Goat anti-Rabbit IgG (H+L) (CABS014) at 1:10000 dilution. Lysates/proteins: 25µg per lane. Blocking buffer: 3% nonfat dry milk in TBST. Detection: ECL Enhanced Kit (AbGn00021). Exposure time: 180s.



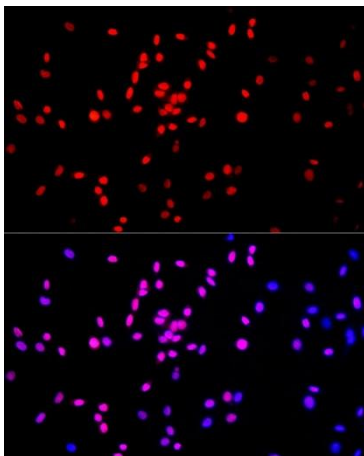
Dot-blot analysis of all sorts of methylation peptides using MonoMethyl-Histone - antibody (CAB2361).



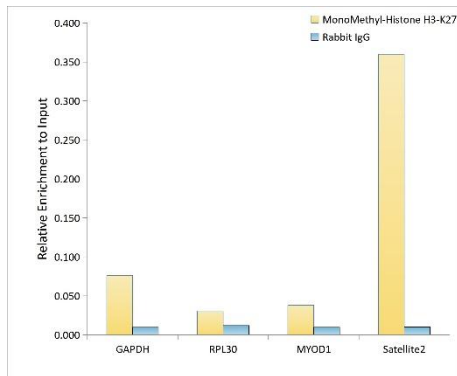
Immunohistochemistry analysis of paraffin-embedded Human breast cancer using MonoMethyl-Histone - Rabbit pAb (CAB2361) at dilution of 1:100 (40x lens). High pressure antigen retrieval performed with 0.01M Citrate buffer (pH 6.0) prior to IHC staining.



Immunohistochemistry analysis of paraffin-embedded Mouse brain using MonoMethyl-Histone - Rabbit pAb (CAB2361) at dilution of 1:100 (40x lens). High pressure antigen retrieval performed with 0.01M Citrate buffer (pH 6.0) prior to IHC staining.



Immunofluorescence analysis of PC-12 cells using MonoMethyl-Histone - Rabbit pAb (CAB2361) at dilution of 1:100 (40x lens). Secondary antibody: Cy3-conjugated Goat anti-Rabbit IgG (H+L) (CABS007) at 1:500 dilution. Blue: DAPI for nuclear staining.



Chromatin immunoprecipitation analysis of extracts of HeLa cells, using MonoMethyl-Histone - antibody (CAB2361) and rabbit IgG. The amount of immunoprecipitated DNA was checked by quantitative PCR. Histogram was constructed by the ratios of the immunoprecipitated DNA to the input.