

DiMethyl-Histone H3-K27 Antibody

CAB2362

Description

This DiMethyl-Histone H3-K27 Antibody is supplied as a kit for advanced applications. The kit includes Bradford Reagent to quantify total protein concentration for accurate sample normalization (Optional).

Product Information

SKU:	CAB2362
Contents:	20 µL, 100 µL Bradford Reagent: 1 vial (2ml)
Category:	Polyclonal Antibody
Synonyms:	H3t, H3.4, H3/g, H3FT, H3C16, HIST3H3, DiMethyl-Histone H3-K27
Clone:	-
Applications:	WB IHC-P IF/ICC ChIP ChIP-seq ELISA DB
Conjugation:	Unconjugated
Reactivity:	Human, Mouse, Rat, Other (Wide Range Predicted)

Antibody Data

Gene ID:	8290 8350
Uniprot:	AB_2764322
Host Species:	Rabbit
Purification:	Affinity purification
Observed MW:	17 kDa
Calculated MW:	15 kDa

Preparation & Storage

Storage: Store at -20°C. Avoid freeze / thaw cycles. Buffer: PBS containing 50% glycerol, preserved with proclin300 or sodium azide (as specified on the Certificate of Analysis), pH 7.3.

Store Bradford Reagent at Room Temperature for 1 Year.

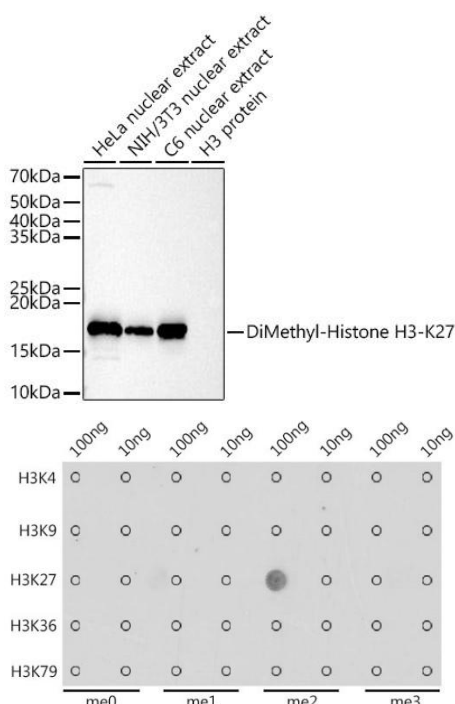
Positive Sample: HeLa, NIH/3T3, C6, H3

Recommended Dilutions:

WB	1:500 - 1:1000
DB	1:500 - 1:1000
IHC-P	1:50 - 1:200
IF/ICC	1:50 - 1:200
ELISA	Recommended starting concentration is 1 µg/mL. Please optimize the concentration based on your specific assay requirements. ChIP 5µg antibody for 5µg-10µg of Chromatin ChIP-seq 1:20 - 1:100

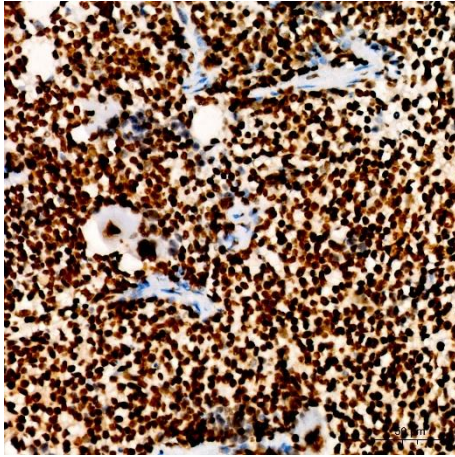
Protein Quantification (Optional): To quantify total protein levels, use the Bradford Reagent included in this kit. Visit <https://www.assaygenie.com/bradford-protein-assay-protocol/> to view the full protocol

Validation Data

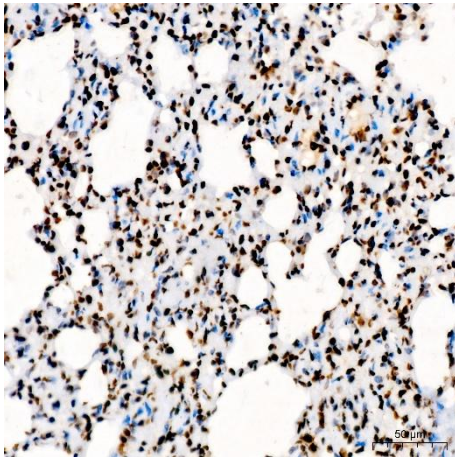


Western blot analysis of various lysates, using DiMethyl-Histone - Rabbit pAb (CAB2362) at 1:1000 dilution. Secondary antibody: HRP-conjugated Goat anti-Rabbit IgG (H+L) (CABS014) at 1:10000 dilution. Lysates/proteins: 25µg per lane. Blocking buffer: 3% nonfat dry milk in TBST. Detection: ECL Basic Kit (AbGn00020). Exposure time: 180s.

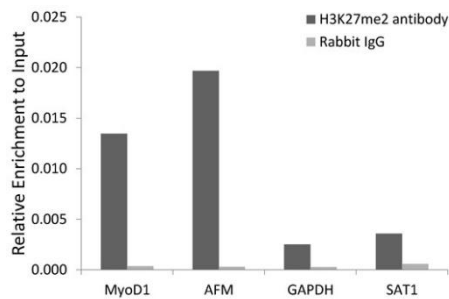
Dot-blot analysis of all sorts of methylation peptides using DiMethyl-Histone - antibody (CAB2362) at 1:1000 dilution.



Immunohistochemistry analysis of paraffin-embedded Mouse spleen tissue using DiMethyl-Histone - Rabbit pAb (CAB2362) at a dilution of 1:100 (40x lens). High pressure antigen retrieval was performed with 0.01 M citrate buffer (pH 6.0) prior to IHC staining.



Immunohistochemistry analysis of paraffin-embedded Rat lung tissue using DiMethyl-Histone - Rabbit pAb (CAB2362) at a dilution of 1:100 (40x lens). High pressure antigen retrieval was performed with 0.01 M citrate buffer (pH 6.0) prior to IHC staining.



Chromatin immunoprecipitation analysis of extracts of 293 cell line, using DiMethyl-Histone - antibody (CAB2362) and rabbit IgG. The amount of immunoprecipitated DNA was checked by quantitative PCR. Histogram was constructed by the ratios of the immunoprecipitated DNA to the input.