

## MonoMethyl-Histone H3-K36 Antibody

CAB2364

### Description

---

This MonoMethyl-Histone H3-K36 Antibody is supplied as a kit for advanced applications. The kit includes Bradford Reagent to quantify total protein concentration for accurate sample normalization (Optional).

### Product Information

---

<b>SKU:</b>	CAB2364
<b>Contents:</b>	20 $\mu$ L, 100 $\mu$ L Bradford Reagent: 1 vial (2ml)
<b>Category:</b>	Polyclonal Antibody
<b>Synonyms:</b>	H3t, H3.4, H3/g, H3FT, H3C16, HIST3H3, MonoMethyl-Histone H3-K36
<b>Clone:</b>	-
<b>Applications:</b>	WB IF/ICC ChIP ChIP-seq ELISA
<b>Conjugation:</b>	Unconjugated
<b>Reactivity:</b>	Human, Mouse, Rat, Other (Wide Range Predicted)

### Antibody Data

---

<b>Gene ID:</b>	8290 8350
<b>Uniprot:</b>	AB_2764324
<b>Host Species:</b>	Rabbit
<b>Purification:</b>	Affinity purification
<b>Observed MW:</b>	17 kDa
<b>Calculated MW:</b>	15 kDa

## Preparation & Storage

**Storage:** Store at -20°C. Avoid freeze / thaw cycles. Buffer: PBS with 0.09% Sodium azide, 50% glycerol, pH 7.3.

Store Bradford Reagent at Room Temperature for 1 Year.

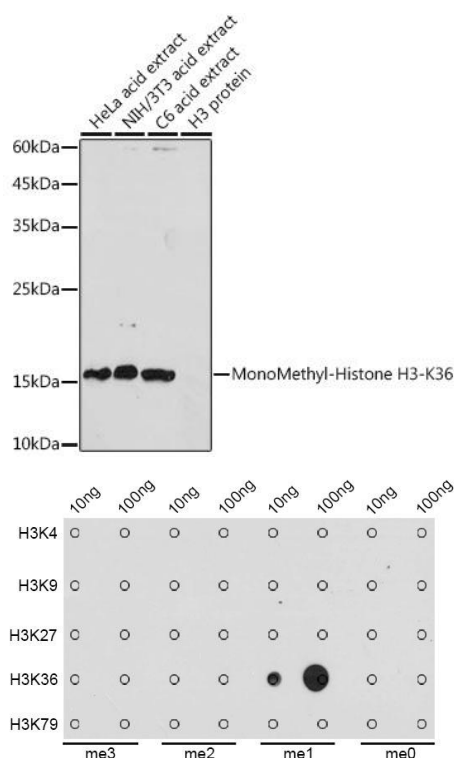
**Positive Sample:** HeLa, NIH/3T3, C6

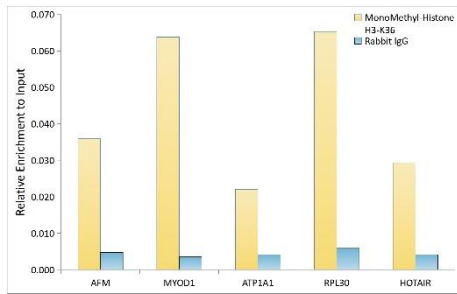
**Recommended Dilutions:**

<b>WB</b>	1:500 - 1:1000
<b>IF/ICC</b>	1:50 - 1:200
<b>ELISA</b>	Recommended starting concentration is 1 µg/mL. Please optimize the concentration based on your specific assay requirements. ChIP 6.5µg antibody for 5µg-10µg of Chromatin ChIP-seq 1:20 - 1:100

**Protein Quantification (Optional):** To quantify total protein levels, use the Bradford Reagent included in this kit. Visit <https://www.assaygenie.com/bradford-protein-assay-protocol/> to view the full protocol

## Validation Data





Chromatin immunoprecipitation analysis of extracts of HeLa cells, using MonoMethyl-Histone - antibody (CAB2364) and rabbit IgG. The amount of immunoprecipitated DNA was checked by quantitative PCR. Histogram was constructed by the ratios of the immunoprecipitated DNA to the input.