

TriMethyl-Histone H3-K36 Antibody

CAB2366

Description

This TriMethyl-Histone H3-K36 Antibody is supplied as a kit for advanced applications. The kit includes Bradford Reagent to quantify total protein concentration for accurate sample normalization (Optional).

Product Information

SKU:	CAB2366
Contents:	20 μ L, 100 μ L Bradford Reagent: 1 vial (2ml)
Category:	Polyclonal Antibody
Synonyms:	H3t, H3.4, H3/g, H3FT, H3C16, HIST3H3, TriMethyl-Histone H3-K36
Clone:	-
Applications:	WB IHC-P IF/ICC ChIP ChIP-seq ELISA DB
Conjugation:	Unconjugated
Reactivity:	Human, Mouse, Rat, Other (Wide Range Predicted)

Antibody Data

Gene ID:	8290 8350
Uniprot:	AB_2764326
Host Species:	Rabbit
Purification:	Affinity purification
Observed MW:	17 kDa
Calculated MW:	15 kDa

Preparation & Storage

Storage: Store at -20°C. Avoid freeze / thaw cycles. Buffer: PBS containing 50% glycerol, preserved with proclin300 or sodium azide (as specified on the Certificate of Analysis), pH 7.3.

Store Bradford Reagent at Room Temperature for 1 Year.

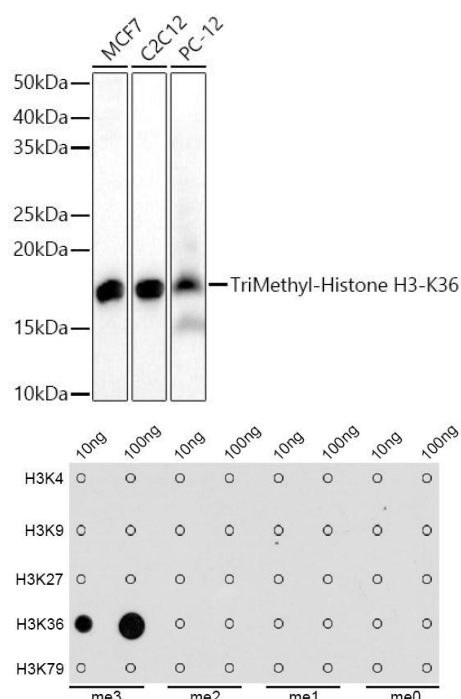
Positive Sample: MCF7, C2C12, PC-12

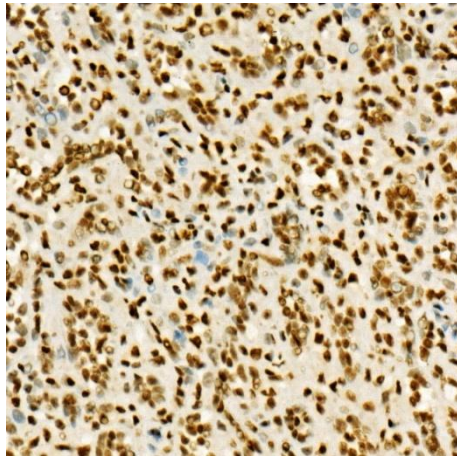
Recommended Dilutions:

WB	1:500 - 1:1000
DB	1:500 - 1:2000
IHC-P	1:50 - 1:200
IF/ICC	1:50 - 1:200
ELISA	Recommended starting concentration is 1 µg/mL. Please optimize the concentration based on your specific assay requirements. ChIP 5µg antibody for 5µg-10µg of Chromatin ChIP-seq 1:20 - 1:100

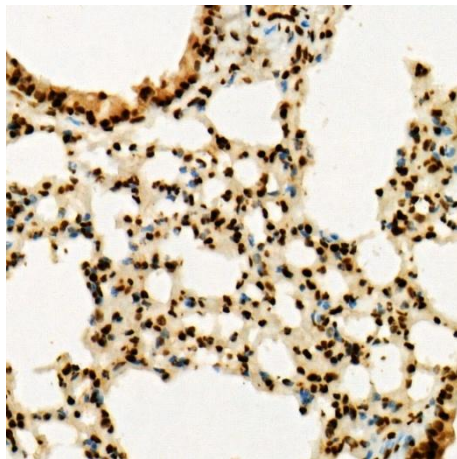
Protein Quantification (Optional): To quantify total protein levels, use the Bradford Reagent included in this kit. Visit <https://www.assaygenie.com/bradford-protein-assay-protocol/> to view the full protocol

Validation Data

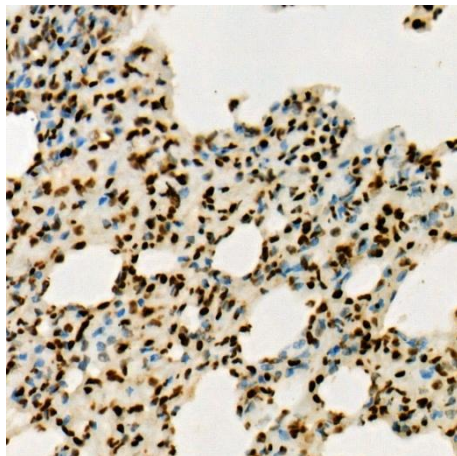




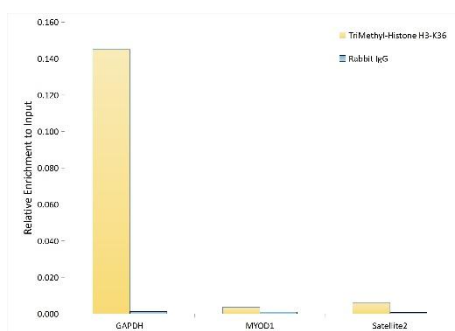
Immunohistochemistry analysis of paraffin-embedded Human spleen using TriMethyl-Histone - Rabbit pAb (CAB2366) at dilution of 1:100 (40x lens). High pressure antigen retrieval performed with 0.01M Citrate buffer (pH 6.0) prior to IHC staining.



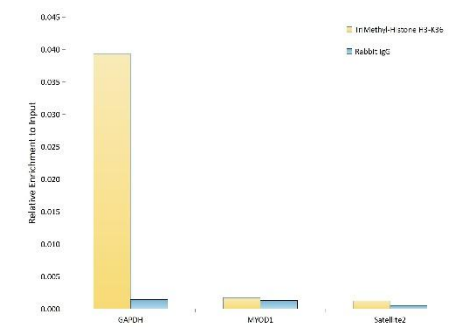
Immunohistochemistry analysis of paraffin-embedded Mouse lung using TriMethyl-Histone - Rabbit pAb (CAB2366) at dilution of 1:100 (40x lens). High pressure antigen retrieval performed with 0.01M Citrate buffer (pH 6.0) prior to IHC staining.



Immunohistochemistry analysis of paraffin-embedded Rat lung using TriMethyl-Histone - Rabbit pAb (CAB2366) at dilution of 1:100 (40x lens). High pressure antigen retrieval performed with 0.01M Citrate buffer (pH 6.0) prior to IHC staining.



Chromatin immunoprecipitation analysis of extracts of HeLa cells, using TriMethyl-Histone - Rabbit pAb antibody (CAB2366) and rabbit IgG. The amount of immunoprecipitated DNA was checked by quantitative PCR. Histogram was constructed by the ratios of the immunoprecipitated DNA to the input.



Chromatin immunoprecipitation analysis of extracts of HeLa cells, using TriMethyl-Histone - antibody (CAB2366) and rabbit IgG. The amount of immunoprecipitated DNA was checked by quantitative PCR. Histogram was constructed by the ratios of the immunoprecipitated DNA to the input.