

IL2 Monoclonal Antibody

CAB23990

Description

This IL2 Monoclonal Antibody is supplied as a kit for advanced applications. The kit includes Bradford Reagent to quantify total protein concentration for accurate sample normalization (Optional).

Product Information

SKU:	CAB23990
Contents:	20 μ L, 100 μ L Bradford Reagent: 1 vial (2ml)
Category:	Monoclonal Antibody
Synonyms:	IL-2, TCGF, lymphokine, IL2
Clone:	ARC55030
Applications:	WB ELISA
Conjugation:	Unconjugated
Reactivity:	Human

Antibody Data

Gene ID:	3558
Uniprot:	-
Host Species:	Rabbit
Purification:	Affinity purification
Observed MW:	16kDa/18kDa/14 kDa
Calculated MW:	17kDa

Preparation & Storage

Storage: Store at -20°C. Avoid freeze / thaw cycles. Buffer: PBS containing 50% glycerol and 0.05% BSA, preserved with proclin300 or sodium azide (as specified on the Certificate of Analysis), pH 7.3.

Store Bradford Reagent at Room Temperature for 1 Year.

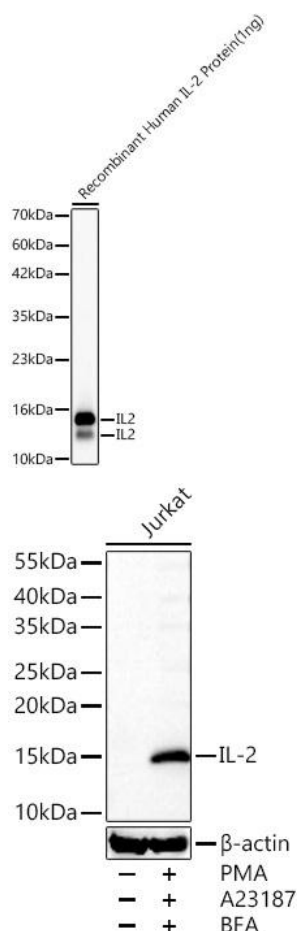
Positive Sample: Recombinant Human IL-2 Protein, Jurkat treated with PMA, A23187 and BFA

Recommended Dilutions:

WB	1:3000 - 1:12000
ELISA	Recommended starting concentration is 1 µg/mL. Please optimize the concentration based on your specific assay requirements.

Protein Quantification (Optional): To quantify total protein levels, use the Bradford Reagent included in this kit. Visit <https://www.assaygenie.com/bradford-protein-assay-protocol/> to view the full protocol

Validation Data



Western blot analysis of Recombinant Human Protein, using Rabbit mAb (CAB23990) at 1:3000 dilution. Secondary antibody: HRP-conjugated Goat anti-Rabbit IgG (H+L) (CABS014) at 1:10000 dilution. Lysates/proteins: 1ng per lane. Blocking buffer: 3% nonfat dry milk in TBST. Detection: ECL Basic Kit (AbGn00020). Exposure time: 30s.

Western blot analysis of lysates from Jurkat cells using Rabbit mAb (CAB23990) at 1:7000 dilution incubated at room temperature for 1.5 hours. Jurkat cells were treated with PMA (40 nM), CAB23187 (2 µM) and BFA (300 ng/mL) for 8 hours. Secondary antibody: HRP-conjugated Goat anti-Rabbit IgG (H+L) (CABS014) at 1:10000 dilution. Lysates/proteins: 30 µg per lane. Blocking buffer: 3% nonfat dry milk in TBST. Detection: ECL Basic Kit (AbGn00020). Exposure time: 20 s.

