

TGF beta induced TGFBI Monoclonal Antibody

CAB2407

Description

This TGF beta induced TGFBI Monoclonal Antibody is supplied as a kit for advanced applications. The kit includes Bradford Reagent to quantify total protein concentration for accurate sample normalization (Optional).

Product Information

SKU:	CAB2407
Contents:	20 µL, 100 µL Bradford Reagent: 1 vial (2ml)
Category:	Monoclonal Antibody
Synonyms:	CSD, CDB1, CDG2, CSD1, CSD2, CSD3, EBMD, LCD1, BIGH3, CDGG1, TGF beta induced (TGFBI)
Clone:	ARC0757
Applications:	WB IHC-P ELISA
Conjugation:	Unconjugated
Reactivity:	Human, Mouse, Rat

Antibody Data

Gene ID:	7045
Uniprot:	AB_2863002
Host Species:	Rabbit
Purification:	Affinity purification
Observed MW:	75 kDa
Calculated MW:	75 kDa

Preparation & Storage

Storage: Store at -20°C. Avoid freeze / thaw cycles. Buffer: PBS containing 50% glycerol and 0.05% BSA, preserved with proclin300 or sodium azide (as specified on the Certificate of Analysis), pH 7.3.

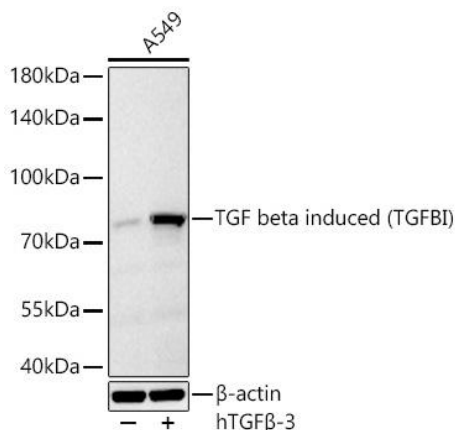
Store Bradford Reagent at Room Temperature for 1 Year.

Positive Sample: A549 treated with hTGFβ-3

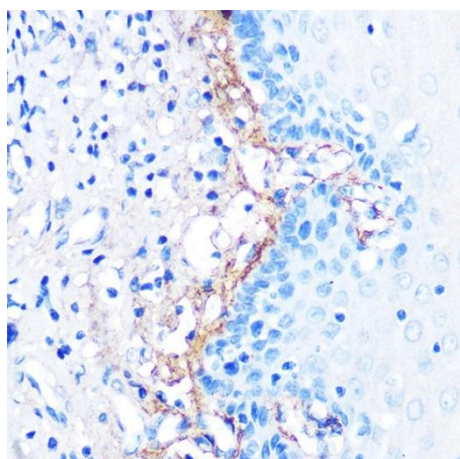
Recommended Dilutions:	WB	1:500 - 1:2000
	IHC-P	1:50 - 1:200
	ELISA	Recommended starting concentration is 1 µg/mL. Please optimize the concentration based on your specific assay requirements.

Protein Quantification (Optional): To quantify total protein levels, use the Bradford Reagent included in this kit. Visit <https://www.assaygenie.com/bradford-protein-assay-protocol/> to view the full protocol

Validation Data



Western blot analysis of lysates from cells using TGF beta induced (TGFB1) Rabbit mAb (CAB2407) at 1:1000 dilution incubated overnight at 4°C. treated with hTGFβ-3 (100 ng/ml) at 37°C for 16 hours. Secondary antibody: HRP-conjugated Goat anti-Rabbit IgG (H+L) (CABS014) at 1:10000 dilution. Lysates/proteins: 30 µg per lane. Blocking buffer: 3 % nonfat dry milk in TBST. Detection: ECL Basic Kit (AbGn00020). Exposure time: 45 s.



Immunohistochemistry analysis of paraffin-embedded Human esophageal using TGF beta induced TGF beta induced (TGFB1) Rabbit mAb (CAB2407) at dilution of 1:100 (40x lens). Microwave antigen retrieval performed with 0.01M PBS Buffer (pH 7.2) prior to IHC staining.

