

REST/NRSF Monoclonal Antibody

CAB2415

Description

This REST/NRSF Monoclonal Antibody is supplied as a kit for advanced applications. The kit includes Bradford Reagent to quantify total protein concentration for accurate sample normalization (Optional).

Product Information

| | |
|----------------------|---|
| SKU: | CAB2415 |
| Contents: | 20 μ L, 100 μ L Bradford Reagent: 1 vial (2ml) |
| Category: | Monoclonal Antibody |
| Synonyms: | WT6, XBR, HGF5, NRSF, DFNA27, GINGF5, REST/NRSF |
| Clone: | ARC0755 |
| Applications: | WB IP ELISA |
| Conjugation: | Unconjugated |
| Reactivity: | Human, Mouse, Rat |

Antibody Data

| | |
|-----------------------|-----------------------|
| Gene ID: | 5978 |
| Uniprot: | AB_2863005 |
| Host Species: | Rabbit |
| Purification: | Affinity purification |
| Observed MW: | 160kDa |
| Calculated MW: | 122kDa |

Preparation & Storage

Storage: Store at -20°C. Avoid freeze / thaw cycles. Buffer: PBS containing 50% glycerol and 0.05% BSA, preserved with proclin300 or sodium azide (as specified on the Certificate of Analysis), pH 7.3.

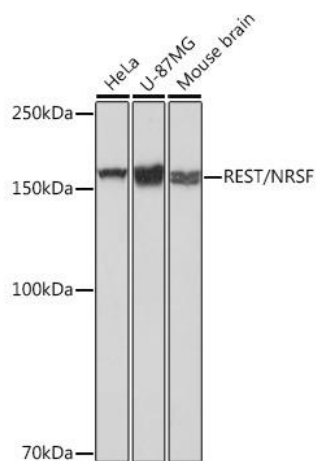
Store Bradford Reagent at Room Temperature for 1 Year.

Positive Sample: HeLa, U-87MG, Mouse brain, Rat brain

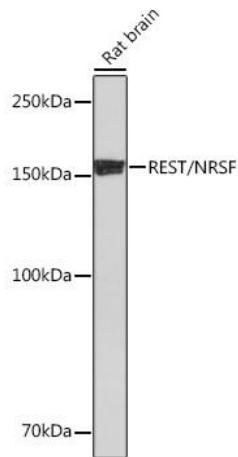
| | | |
|-------------------------------|--------------|---|
| Recommended Dilutions: | WB | 1:1000 - 1:6000 |
| | IP | 0.5µg-4µg antibody for 200µg-400µg extracts of whole cells |
| | ELISA | Recommended starting concentration is 1 µg/mL. Please optimize the concentration based on your specific assay requirements. |

Protein Quantification (Optional): To quantify total protein levels, use the Bradford Reagent included in this kit. Visit <https://www.assaygenie.com/bradford-protein-assay-protocol/> to view the full protocol

Validation Data



Western blot analysis of various lysates using REST/NRSF Rabbit mAb (CAB2415) at 1 : 1000 dilution. Secondary antibody: HRP-conjugated Goat anti-Rabbit IgG (H+L) (CABS014) at 1:10000 dilution. Lysates/proteins: 25µg per lane. Blocking buffer: 3% nonfat dry milk in TBST. Detection: ECL Basic Kit (AbGn00020). Exposure time: 1s.



Western blot analysis of lysates from Rat brain, using REST/NRSF Rabbit mAb (CAB2415) at 1 : 1000 dilution. Secondary antibody: HRP-conjugated Goat anti-Rabbit IgG (H+L) (CABS014) at 1:10000 dilution. Lysates/proteins: 25µg per lane. Blocking buffer: 3% nonfat dry milk in TBST. Detection: ECL Basic Kit (AbGn00020). Exposure time: 90s.