

ISG15 Monoclonal Antibody

CAB2416

Description

This ISG15 Monoclonal Antibody is supplied as a kit for advanced applications. The kit includes Bradford Reagent to quantify total protein concentration for accurate sample normalization (Optional).

Product Information

SKU:	CAB2416
Contents:	20 μ L, 100 μ L Bradford Reagent: 1 vial (2ml)
Category:	Monoclonal Antibody
Synonyms:	G1P2, IP17, UCRP, IFI15, IMD38, hUCRP, [KD Validated] ISG15
Clone:	ARC53794
Applications:	WB ELISA
Conjugation:	Unconjugated
Reactivity:	Human, Mouse, Rat

Antibody Data

Gene ID:	9636
Uniprot:	AB_2863006
Host Species:	Rabbit
Purification:	Affinity purification
Observed MW:	15 kDa
Calculated MW:	18kDa

Preparation & Storage

Storage: Store at -20°C. Avoid freeze / thaw cycles. Buffer: PBS containing 50% glycerol and 0.05% BSA, preserved with proclin300 or sodium azide (as specified on the Certificate of Analysis), pH 7.3.

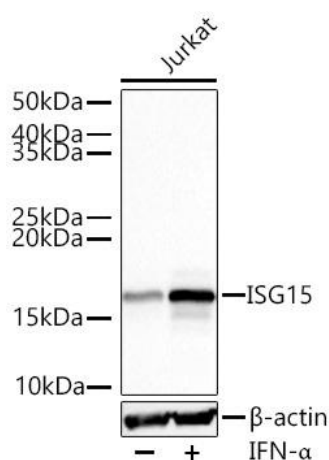
Store Bradford Reagent at Room Temperature for 1 Year.

Positive Sample: Jurkat treated with IFN- α , HeLa

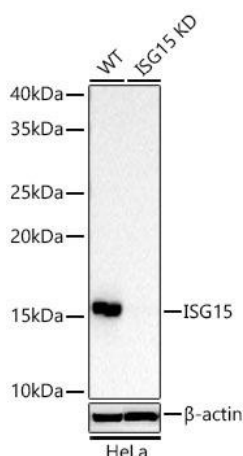
Recommended Dilutions:	WB	1:500 - 1:2000
	ELISA	Recommended starting concentration is 1 μ g/mL. Please optimize the concentration based on your specific assay requirements.

Protein Quantification (Optional): To quantify total protein levels, use the Bradford Reagent included in this kit. Visit <https://www.assaygenie.com/bradford-protein-assay-protocol/> to view the full protocol

Validation Data



Western blot analysis of lysates from Jurkat cells using [KD Validated] Rabbit mAb (CAB2416) at 1:500 dilution incubated overnight at 4°C. Jurkat cells were treated with IFN- α (100 ng/mL) at 37°C for 24 hours. Secondary antibody: HRP-conjugated Goat anti-Rabbit IgG (H+L) (CABS014) at 1:10000 dilution. Lysates/proteins: 30 μ g per lane. Blocking buffer: 3% nonfat dry milk in TBST. Detection: ECL Basic Kit (AbGn00020). Exposure time: 20s.



Western blot analysis of lysates from wild type (WT) and knockdown (KD) HeLa cells using [KD Validated] Rabbit mAb (CAB2416) at 1:1000 dilution incubated overnight at 4°C. Secondary antibody: HRP-conjugated Goat anti-Rabbit IgG (H+L) (CABS014) at 1:10000 dilution. Lysates/proteins: 25 μ g per lane. Blocking buffer: 3% nonfat dry milk in TBST. Detection: ECL Basic Kit (AbGn00020). Exposure time: 45s.

