

## YTHDF2 Polyclonal Antibody

CAB24287

### Description

---

This YTHDF2 Polyclonal Antibody is supplied as a kit for advanced applications. The kit includes Bradford Reagent to quantify total protein concentration for accurate sample normalization (Optional).

### Product Information

---

|                      |   |
|----------------------|---|
| <b>SKU:</b>          | CAB24287  |
| <b>Contents:</b>     | 20 $\mu$ L, 100 $\mu$ L<br>Bradford Reagent: 1 vial (2ml)                 |
| <b>Category:</b>     | Polyclonal Antibody   |
| <b>Synonyms:</b>     | DF2, CAHL, HGRG8, NY-REN-2, YTHDF2  |
| <b>Clone:</b>        | -   |
| <b>Applications:</b> | <span>WB</span> <span>IHC-P</span> <span>IF/ICC</span> <span>ELISA</span> |
| <b>Conjugation:</b>  | -   |
| <b>Reactivity:</b>   | Human, Mouse, Rat   |

### Antibody Data

---

|                       |                       |
|-----------------------|-----------------------|
| <b>Gene ID:</b>       | 51441                 |
| <b>Uniprot:</b>       | -                     |
| <b>Host Species:</b>  | Rabbit                |
| <b>Purification:</b>  | Affinity purification |
| <b>Observed MW:</b>   | 65kDa                 |
| <b>Calculated MW:</b> | 62kDa                 |

## Preparation & Storage

**Storage:** Store at -20°C. Avoid freeze / thaw cycles. Buffer: PBS containing 50% glycerol, preserved with proclin300 or sodium azide (as specified on the Certificate of Analysis), pH 7.3.

Store Bradford Reagent at Room Temperature for 1 Year.

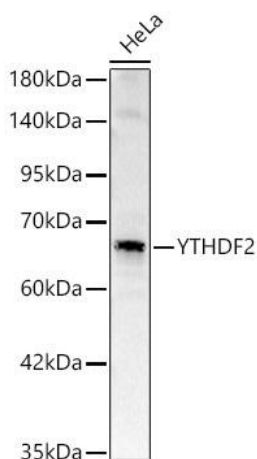
**Positive Sample:** HeLa

**Recommended Dilutions:**

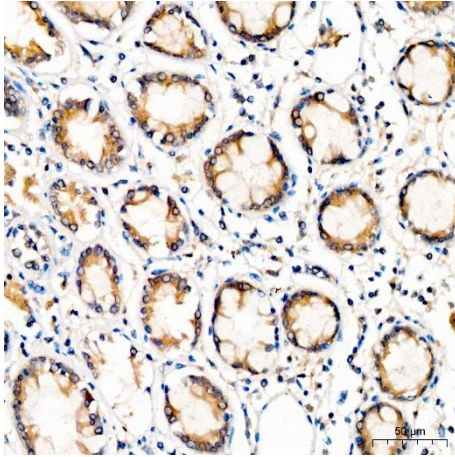
|               |   |
|---------------|---|
| <b>WB</b>     | 1:500 - 1:1000  |
| <b>IHC-P</b>  | 1:50 - 1:200  |
| <b>IF/ICC</b> | 1:50 - 1:200  |
| <b>ELISA</b>  | Recommended starting concentration is 1 µg/mL. Please optimize the concentration based on your specific assay requirements. |

**Protein Quantification (Optional):** To quantify total protein levels, use the Bradford Reagent included in this kit. Visit <https://www.assaygenie.com/bradford-protein-assay-protocol/> to view the full protocol

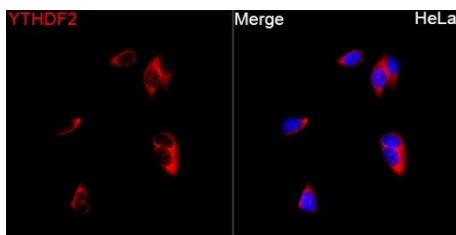
## Validation Data



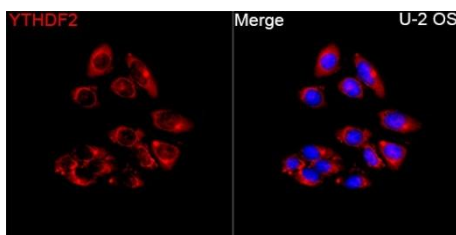
Western blot analysis of lysates from HeLa cells, using YTHDF2 Rabbit pAb (CAB24287) at 1:1000 dilution. Secondary antibody: HRP-conjugated Goat anti-Rabbit IgG (H+L) (CABS014) at 1:10000 dilution. Lysates/proteins: 25µg per lane. Blocking buffer: 3% nonfat dry milk in TBST. Detection: ECL Basic Kit (AbGn00020). Exposure time: 60s.



Immunohistochemistry analysis of paraffin-embedded Human colon using YTHDF2 Rabbit pAb (CAB24287) at dilution of 1:50 (40x lens). High pressure antigen retrieval performed with 0.01M Citrate buffer (pH 6.0) prior to IHC staining.



Immunofluorescence analysis of HeLa cells using YTHDF2 Rabbit pAb (CAB24287) at a dilution of 1:200 (40x lens). Secondary antibody: Cy3-conjugated Goat anti-Rabbit IgG (H+L)(CABS007) at 1:500 dilution. Blue: DAPI for nuclear staining.



Immunofluorescence analysis of U-2 OS cells using YTHDF2 Rabbit pAb (CAB24287) at a dilution of 1:200 (40x lens). Secondary antibody: Cy3-conjugated Goat anti-Rabbit IgG (H+L)(CABS007) at 1:500 dilution. Blue: DAPI for nuclear staining.