

Ku80 Polyclonal Antibody

CAB24867

Description

This Ku80 Polyclonal Antibody is supplied as a kit for advanced applications. The kit includes Bradford Reagent to quantify total protein concentration for accurate sample normalization (Optional).

Product Information

| | |
|----------------------|---|
| SKU: | CAB24867 |
| Contents: | 20 µL, 100 µL Bradford Reagent: 1 vial (2ml) |
| Category: | Polyclonal Antibody |
| Synonyms: | Ku80, Ku86, CTC85, CTCBF |
| Clone: | - |
| Applications: | WB IHC-P IF/ICC ELISA |
| Conjugation: | Unconjugated |
| Reactivity: | Human, Mouse |

Antibody Data

| | |
|-----------------------|-----------------------|
| Gene ID: | 22596 |
| Uniprot: | - |
| Host Species: | Rabbit |
| Purification: | Affinity purification |
| Observed MW: | 83kDa |
| Calculated MW: | 83kDa |

Preparation & Storage

Storage: Store at -20°C. Avoid freeze / thaw cycles. Buffer: PBS containing 50% glycerol, preserved with proclin300 or sodium azide (as specified on the Certificate of Analysis), pH 7.3.

Store Bradford Reagent at Room Temperature for 1 Year.

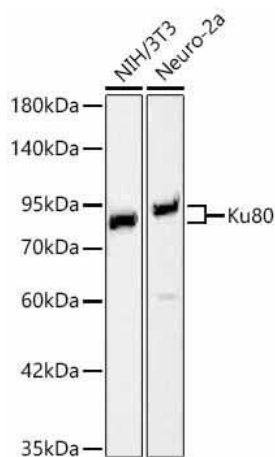
Positive Sample: NIH/3T3, Neuro-2a, HeLa

Recommended Dilutions:

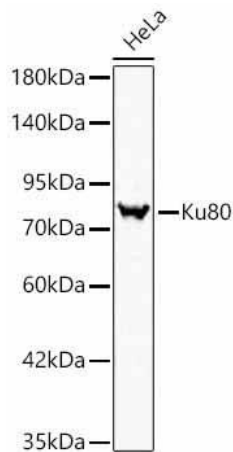
| | |
|---------------|---|
| WB | 1:500 - 1:1000 |
| IF/ICC | 1:100-1:400 |
| IHC-P | 1:2000 - 1:8000 |
| ELISA | Recommended starting concentration is 1 µg/mL. Please optimize the concentration based on your specific assay requirements. |

Protein Quantification (Optional): To quantify total protein levels, use the Bradford Reagent included in this kit. Visit <https://www.assaygenie.com/bradford-protein-assay-protocol/> to view the full protocol

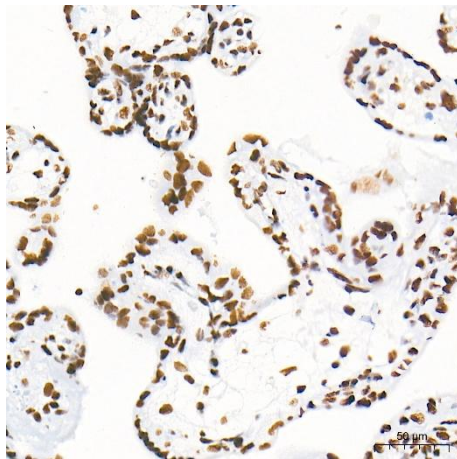
Validation Data



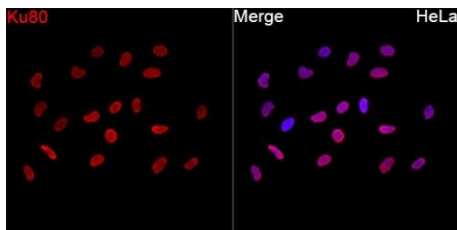
Western blot analysis of various lysates using Ku80 Rabbit pAb (CAB24867) at 1:900 dilution. Secondary antibody: HRP-conjugated Goat anti-Rabbit IgG (H+L) (CABS014) at 1:10000 dilution. Lysates / proteins: 25 µg per lane. Blocking buffer: 3 % nonfat dry milk in TBST. Detection: ECL Basic Kit (AbGn00020). Exposure time: 90s.



Western blot analysis of lysates from HeLa cells using Ku80 Rabbit pAb (CAB24867) at 1:900 dilution. Secondary antibody: HRP-conjugated Goat anti-Rabbit IgG (H+L) (CABS014) at 1:10000 dilution. Lysates/proteins: 25 µg per lane. Blocking buffer: 3% nonfat dry milk in TBST. Detection: ECL Basic Kit (AbGn00020). Exposure time: 1s.



Immunohistochemistry analysis of paraffin-embedded Human placenta tissue using Ku80 Rabbit pAb (CAB24867) at a dilution of 1:4000 (40x lens). High pressure antigen retrieval performed with 0.01M Tris-EDTA Buffer (pH 9.0) prior to IHC staining.



Immunofluorescence analysis of HeLa cells using Ku80 Rabbit pAb (CAB24867) at a dilution of 1:100 (40x lens). Secondary antibody: Cy3-conjugated Goat anti-Rabbit IgG (H+L)(CABS007) at 1:500 dilution. Blue: DAPI for nuclear staining.