

Surfactant Protein A/SP-A Polyclonal Antibody

CAB24870

Description

This Surfactant Protein A/SP-A Polyclonal Antibody is supplied as a kit for advanced applications. The kit includes Bradford Reagent to quantify total protein concentration for accurate sample normalization (Optional).

Product Information

SKU:	CAB24870
Contents:	20 µL, 100 µL Bradford Reagent: 1 vial (2ml)
Category:	Polyclonal Antibody
Synonyms:	SPA, ILD1, PSAP, PSPA, SP-A, SPA1, PSP-A, SFTP1, SP-A1, COLEC4, SFTPA1B, SP-A1 beta, SP-A1 delta, SP-A1 gamma, SP-A1 epsilon, SFTPA1
Clone:	-
Applications:	WB
Conjugation:	Unconjugated
Reactivity:	Rat

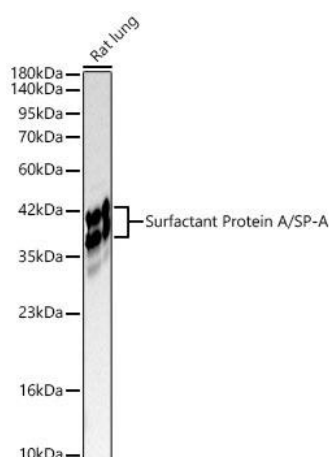
Antibody Data

Gene ID:	653509 729238
Uniprot:	-
Host Species:	Rabbit
Purification:	Affinity purification
Observed MW:	30-38kDa
Calculated MW:	26kDa

Preparation & Storage

Storage:	Store at -20°C. Avoid freeze / thaw cycles. Buffer: PBS containing 50% glycerol, preserved with proclin300 or sodium azide (as specified on the Certificate of Analysis), pH 7.3. Store Bradford Reagent at Room Temperature for 1 Year.
Positive Sample:	Rat lung
Recommended Dilutions:	N/A
Protein Quantification (Optional):	To quantify total protein levels, use the Bradford Reagent included in this kit. Visit https://www.assaygenie.com/bradford-protein-assay-protocol/ to view the full protocol

Validation Data



Western blot analysis of lysates from Rat lung using Surfactant Protein A/SP-A Rabbit pAb (CAB24870) at 1:2000 dilution. Secondary antibody: HRP-conjugated Goat anti-Rabbit IgG (H+L) (CABS014) at 1:10000 dilution. Lysates/proteins: 25 µg per lane. Blocking buffer: 3% nonfat dry milk in TBST. Detection: ECL Basic Kit (AbGn00020). Exposure time:20s.