

## CCL8/MCP-2 Polyclonal Antibody

CAB24871

### Description

---

This CCL8/MCP-2 Polyclonal Antibody is supplied as a kit for advanced applications. The kit includes Bradford Reagent to quantify total protein concentration for accurate sample normalization (Optional).

### Product Information

---

<b>SKU:</b>	CAB24871
<b>Contents:</b>	20 $\mu$ L, 100 $\mu$ L Bradford Reagent: 1 vial (2ml)
<b>Category:</b>	Polyclonal Antibody
<b>Synonyms:</b>	CCL8, HC14, MCP-2, MCP2, SCYA10, SCYA8, C-C motif chemokine 8, CCL8/MCP-2
<b>Clone:</b>	-
<b>Applications:</b>	<b>WB</b>
<b>Conjugation:</b>	Unconjugated
<b>Reactivity:</b>	Human

### Antibody Data

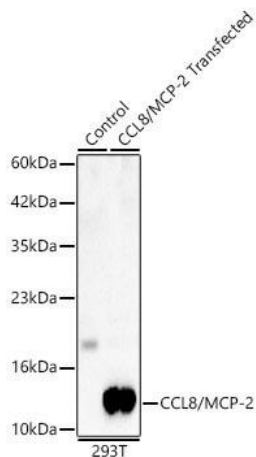
---

<b>Gene ID:</b>	6355
<b>Uniprot:</b>	-
<b>Host Species:</b>	Rabbit
<b>Purification:</b>	Affinity purification
<b>Observed MW:</b>	11kDa
<b>Calculated MW:</b>	11kDa

## Preparation & Storage

<b>Storage:</b>	Store at -20°C. Avoid freeze / thaw cycles. Buffer: PBS containing 50% glycerol, preserved with proclin300 or sodium azide (as specified on the Certificate of Analysis), pH 7.3. Store Bradford Reagent at Room Temperature for 1 Year.
<b>Positive Sample:</b>	293T transfected with CCL8/MCP-2
<b>Recommended Dilutions:</b>	N/A
<b>Protein Quantification (Optional):</b>	To quantify total protein levels, use the Bradford Reagent included in this kit. Visit <a href="https://www.assaygenie.com/bradford-protein-assay-protocol/">https://www.assaygenie.com/bradford-protein-assay-protocol/</a> to view the full protocol

## Validation Data



Western blot analysis of lysates from wild type (WT) and 293T cells transfected with CCL8/MCP-2 using CCL8/MCP-2 Rabbit pAb (CAB24871) at 1:1000 dilution. Secondary antibody: HRP-conjugated Goat anti-Rabbit IgG (H+L) (CABS014) at 1:10000 dilution. Lysates/proteins: 25 µg per lane. Blocking buffer: 3% nonfat dry milk in TBST. Detection: ECL Basic Kit (AbGn00020). Exposure time: 180s.