

HSPB8/HSP22 Antibody

CAB2514

Description

This HSPB8/HSP22 Antibody is supplied as a kit for advanced applications. The kit includes Bradford Reagent to quantify total protein concentration for accurate sample normalization (Optional).

Product Information

SKU:	CAB2514
Contents:	20 µL, 100 µL Bradford Reagent: 1 vial (2ml)
Category:	Polyclonal Antibody
Synonyms:	H11, HMN2, CMT2L, DHMN2, E2IG1, HMN2A, HSP22, HSPB8/HSP22
Clone:	-
Applications:	WB IHC-P ELISA IF-P
Conjugation:	Unconjugated
Reactivity:	Human, Mouse, Rat

Antibody Data

Gene ID:	26353
Uniprot:	AB_2764405
Host Species:	Rabbit
Purification:	Affinity purification
Observed MW:	22kDa
Calculated MW:	22kDa

Preparation & Storage

Storage: Store at -20°C. Avoid freeze / thaw cycles. Buffer: PBS containing 50% glycerol, preserved with proclin300 or sodium azide (as specified on the Certificate of Analysis), pH 7.3.

Store Bradford Reagent at Room Temperature for 1 Year.

Positive Sample: RD, Mouse liver, Mouse heart, Rat heart

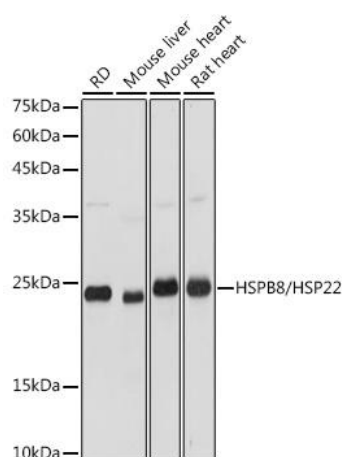
Recommended Dilutions:

WB	1:1000 - 1:5000
IF-P	1:50 - 1:200
IHC-P	1:50 - 1:200
ELISA	Recommended starting concentration is 1 µg/mL. Please optimize the concentration based on your specific assay requirements.

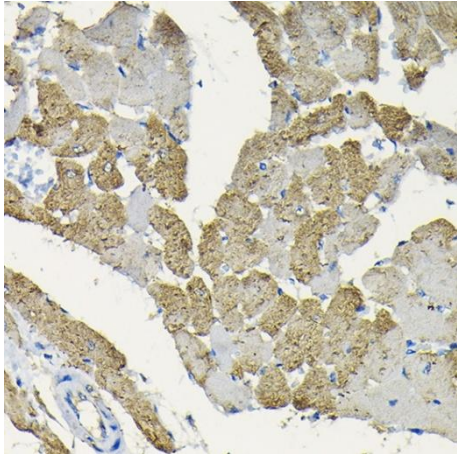
Protein Quantification (Optional):

To quantify total protein levels, use the Bradford Reagent included in this kit. Visit <https://www.assaygenie.com/bradford-protein-assay-protocol/> to view the full protocol

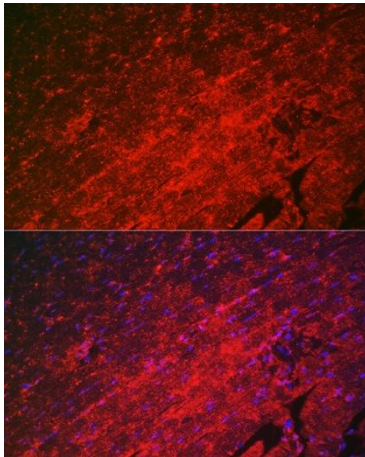
Validation Data



Western blot analysis of various lysates using HSPB8/ Rabbit pAb (CAB2514) at 1:3000 dilution. Secondary antibody: HRP-conjugated Goat anti-Rabbit IgG (H+L) (CABS014) at 1:10000 dilution. Lysates/proteins: 25µg per lane. Blocking buffer: 3% nonfat dry milk in TBST. Detection: ECL Basic Kit (AbGn00020). Exposure time: 1s.



Immunohistochemistry analysis of paraffin-embedded Rat heart using HSPB8/ Rabbit pAb (CAB2514) at dilution of 1:100 (40x lens). High pressure antigen retrieval performed with 0.01M Citrate buffer (pH 6.0) prior to IHC staining.



Immunofluorescence analysis of paraffin-embedded mouse heart using HSPB8/ Rabbit pAb (CAB2514) at dilution of 1:100 (40x lens). Secondary antibody: Cy3-conjugated Goat anti-Rabbit IgG (H+L) (CABS007) at 1:500 dilution. Blue: DAPI for nuclear staining.