

## [KO Validated] APEX1/APE1 Antibody

CAB2587

### Description

---

This [KO Validated] APEX1/APE1 Antibody is supplied as a kit for advanced applications. The kit includes Bradford Reagent to quantify total protein concentration for accurate sample normalization (Optional).

### Product Information

---

SKU:	CAB2587
Contents:	20 $\mu$ L, 100 $\mu$ L Bradford Reagent: 1 vial (2ml)
Category:	Polyclonal Antibody
Synonyms:	APE, APX, APE1, APEN, APEX, HAP1, REF1, E1
Clone:	-
Applications:	<span>WB</span> <span>IF/ICC</span> <span>IP</span> <span>ELISA</span>
Conjugation:	Unconjugated
Reactivity:	Human

### Antibody Data

---

Gene ID:	328
Uniprot:	AB_2863015
Host Species:	Rabbit
Purification:	Affinity purification
Observed MW:	39kDa
Calculated MW:	36kDa

## Preparation & Storage

**Storage:** Store at -20°C. Avoid freeze / thaw cycles. Buffer: PBS containing 50% glycerol, preserved with proclin300 or sodium azide (as specified on the Certificate of Analysis), pH 7.3.

Store Bradford Reagent at Room Temperature for 1 Year.

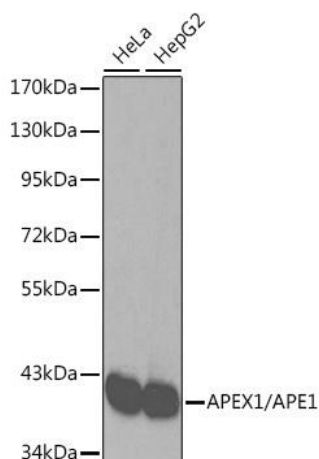
**Positive Sample:** HeLa, HepG2

**Recommended Dilutions:**

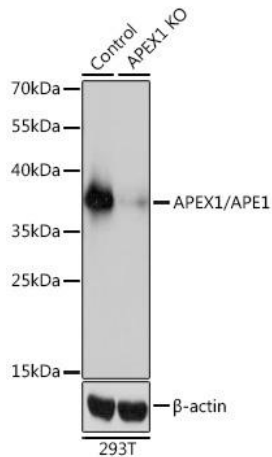
<b>WB</b>	1:500 - 1:2000
<b>IF/ICC</b>	1:50 - 1:100
<b>IP</b>	0.5µg-4µg antibody for 200µg-400µg extracts of whole cells
<b>ELISA</b>	Recommended starting concentration is 1 µg/mL. Please optimize the concentration based on your specific assay requirements.

**Protein Quantification (Optional):** To quantify total protein levels, use the Bradford Reagent included in this kit. Visit <https://www.assaygenie.com/bradford-protein-assay-protocol/> to view the full protocol

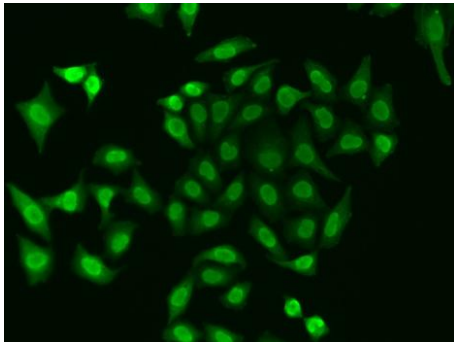
## Validation Data



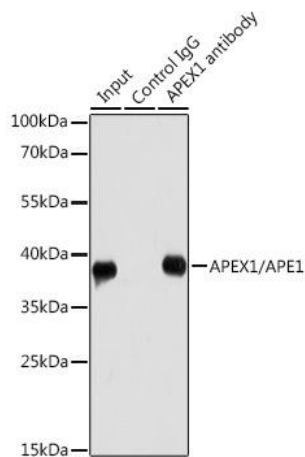
Western blot analysis of various lysates using [KO Validated] APEX1/ Rabbit pAb (CAB2587). Secondary antibody: HRP-conjugated Goat anti-Rabbit IgG (H+L) (CABS014) at 1:10000 dilution. Lysates/proteins: 25µg per lane. Blocking buffer: 3% nonfat dry milk in TBST.



Western blot analysis of lysates from wild type (WT) and APEX1/ knockout (KO) 293T cells, using [KO Validated] APEX1/ Rabbit pAb (CAB2587) at 1:3000 dilution. Secondary antibody: HRP-conjugated Goat anti-Rabbit IgG (H+L) (CABS014) at 1:10000 dilution. Lysates/proteins: 25µg per lane. Blocking buffer: 3% nonfat dry milk in TBST. Detection: ECL Basic Kit (AbGn00020). Exposure time: 1s.



Immunofluorescence analysis of cells using [KO Validated] APEX1/ Rabbit pAb (CAB2587). Secondary antibody: Cy3-conjugated Goat anti-Rabbit IgG (H+L) (CABS007) at 1:500 dilution.



Immunoprecipitation analysis of 200 µg extracts of HeLa cells using 1 µg APEX1/ antibody (CAB2587). Western blot was performed from the immunoprecipitate using APEX1/ antibody (CAB2587) at a dilution of 1:1000.