

## RHOT2 Antibody

CAB2597

### Description

---

This RHOT2 Antibody is supplied as a kit for advanced applications. The kit includes Bradford Reagent to quantify total protein concentration for accurate sample normalization (Optional).

### Product Information

---

|                      |                                                 |
|----------------------|-------------------------------------------------|
| <b>SKU:</b>          | CAB2597                                         |
| <b>Contents:</b>     | 20 µL, 100 µL<br>Bradford Reagent: 1 vial (2ml) |
| <b>Category:</b>     | Polyclonal Antibody                             |
| <b>Synonyms:</b>     | RASL, ARHT2, MIRO2, MIRO-2, C16orf39, RHOT2     |
| <b>Clone:</b>        | -                                               |
| <b>Applications:</b> | WB IHC-P IF/ICC ELISA                           |
| <b>Conjugation:</b>  | Unconjugated                                    |
| <b>Reactivity:</b>   | Human, Mouse, Rat                               |

### Antibody Data

---

|                       |                       |
|-----------------------|-----------------------|
| <b>Gene ID:</b>       | 89941                 |
| <b>Uniprot:</b>       | AB_2764482            |
| <b>Host Species:</b>  | Rabbit                |
| <b>Purification:</b>  | Affinity purification |
| <b>Observed MW:</b>   | 80kDa                 |
| <b>Calculated MW:</b> | 68kDa                 |

## Preparation & Storage

**Storage:** Store at -20°C. Avoid freeze / thaw cycles. Buffer: PBS containing 50% glycerol, preserved with proclin300 or sodium azide (as specified on the Certificate of Analysis), pH 7.3.

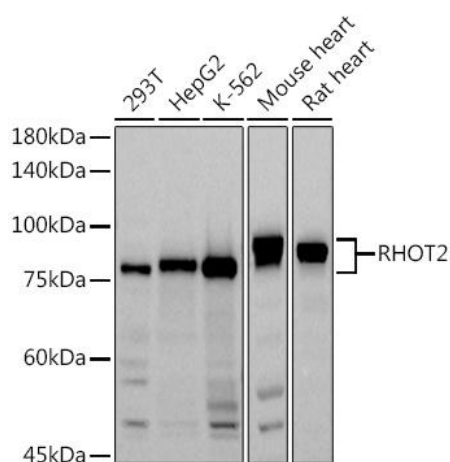
Store Bradford Reagent at Room Temperature for 1 Year.

**Positive Sample:** 293T, HepG2, K-562, Mouse heart, Rat heart

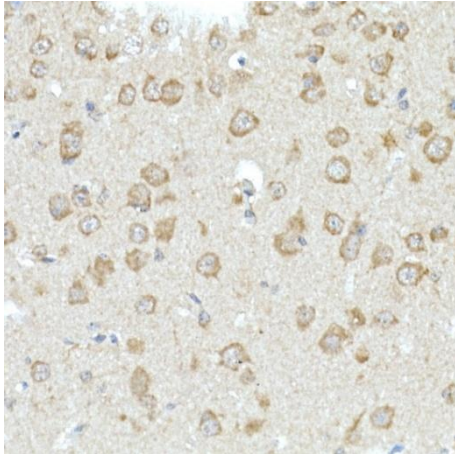
|                               |               |                                                                                                                             |
|-------------------------------|---------------|-----------------------------------------------------------------------------------------------------------------------------|
| <b>Recommended Dilutions:</b> | <b>WB</b>     | 1:500 - 1:1000                                                                                                              |
|                               | <b>IHC-P</b>  | 1:50 - 1:200                                                                                                                |
|                               | <b>IF/ICC</b> | 1:50 - 1:200                                                                                                                |
|                               | <b>ELISA</b>  | Recommended starting concentration is 1 µg/mL. Please optimize the concentration based on your specific assay requirements. |

**Protein Quantification (Optional):** To quantify total protein levels, use the Bradford Reagent included in this kit. Visit <https://www.assaygenie.com/bradford-protein-assay-protocol/> to view the full protocol

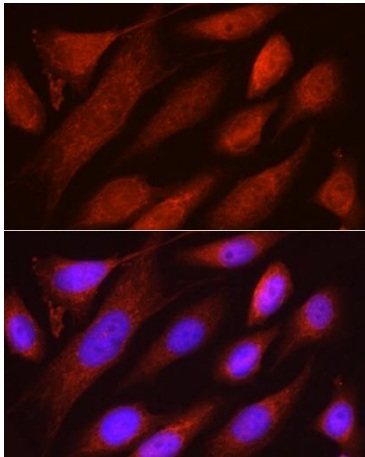
## Validation Data



Western blot analysis of various lysates using (CAB2597) at 1:1000 dilution. Secondary antibody: HRP-conjugated Goat anti-Rabbit IgG (H+L) (CABS014) at 1:10000 dilution. Lysates/proteins: 25µg per lane. Blocking buffer: 3% nonfat dry milk in TBST. Detection: ECL Basic Kit (AbGn00020). Exposure time: 30s.



Immunohistochemistry analysis of paraffin-embedded Mouse brain using RHOT2 Rabbit pAb (CAB2597) at dilution of 1:50 (40x lens). High pressure antigen retrieval performed with 0.01M Citrate buffer (pH 6.0) prior to IHC staining.



Immunofluorescence analysis of U2OS cells using RHOT2 Rabbit pAb (CAB2597) at dilution of 1:50 (40x lens). Secondary antibody: Cy3-conjugated Goat anti-Rabbit IgG (H+L) (CABS007) at 1:500 dilution. Blue: DAPI for nuclear staining.