

Gelsolin Monoclonal Antibody

CAB2612

Description

This Gelsolin Monoclonal Antibody is supplied as a kit for advanced applications. The kit includes Bradford Reagent to quantify total protein concentration for accurate sample normalization (Optional).

Product Information

SKU:	CAB2612
Contents:	20 μ L, 100 μ L Bradford Reagent: 1 vial (2ml)
Category:	Monoclonal Antibody
Synonyms:	ADF, AGEL, Gelsolin
Clone:	ARC1924
Applications:	WB IHC-P ELISA
Conjugation:	Unconjugated
Reactivity:	Human, Mouse

Antibody Data

Gene ID:	2934
Uniprot:	AB_2863017
Host Species:	Rabbit
Purification:	Affinity purification
Observed MW:	86kDa
Calculated MW:	86kDa

Preparation & Storage

Storage: Store at -20°C. Avoid freeze / thaw cycles. Buffer: PBS containing 50% glycerol and 0.05% BSA, preserved with proclin300 or sodium azide (as specified on the Certificate of Analysis), pH 7.3.

Store Bradford Reagent at Room Temperature for 1 Year.

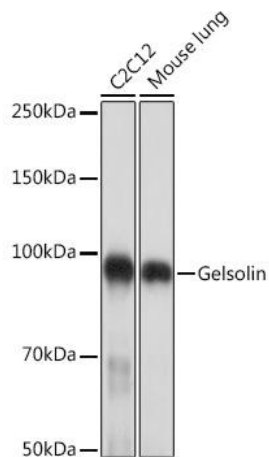
Positive Sample: C2C12, Mouse lung, HeLa, A-549, RD

Recommended Dilutions:

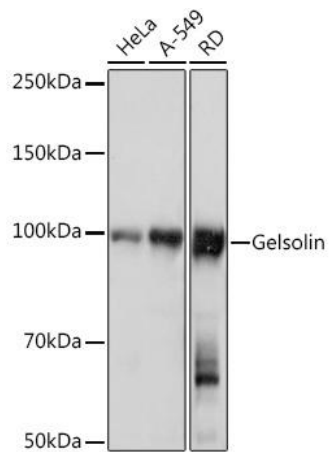
WB	1:1000 - 1:5000
IHC-P	1:50 - 1:200
ELISA	Recommended starting concentration is 1 µg/mL. Please optimize the concentration based on your specific assay requirements.

Protein Quantification (Optional): To quantify total protein levels, use the Bradford Reagent included in this kit. Visit <https://www.assaygenie.com/bradford-protein-assay-protocol/> to view the full protocol

Validation Data



Western blot analysis of various lysates using Gelsolin Rabbit mAb (CAB2612) at 1:1000 dilution. Secondary antibody: HRP-conjugated Goat anti-Rabbit IgG (H+L) (CABS014) at 1:10000 dilution. Lysates/proteins: 25µg per lane. Blocking buffer: 3% nonfat dry milk in TBST. Detection: ECL Basic Kit (AbGn00020). Exposure time: 1s.



Western blot analysis of various lysates using Gelsolin Rabbit mAb (CAB2612) at 1:1000 dilution. Secondary antibody: HRP-conjugated Goat anti-Rabbit IgG (H+L) (CABS014) at 1:10000 dilution. Lysates/proteins: 25µg per lane. Blocking buffer: 3% nonfat dry milk in TBST. Detection: ECL Basic Kit (AbGn00020). Exposure time: 5s.