

Cyclin A1/A2 Monoclonal Antibody

CAB2635

Description

This Cyclin A1/A2 Monoclonal Antibody is supplied as a kit for advanced applications. The kit includes Bradford Reagent to quantify total protein concentration for accurate sample normalization (Optional).

Product Information

SKU:	CAB2635
Contents:	20 μ L, 100 μ L Bradford Reagent: 1 vial (2ml)
Category:	Monoclonal Antibody
Synonyms:	CCN1, CCNA, CT146, Cyclin A1/A2
Clone:	ARC2642
Applications:	WB IP ELISA
Conjugation:	Unconjugated
Reactivity:	Human, Mouse

Antibody Data

Gene ID:	890 8900
Uniprot:	-
Host Species:	Rabbit
Purification:	Affinity purification
Observed MW:	52 kDa (Cyclin A1)/49 kDa (Cyclin A2)
Calculated MW:	49 kDa/52 kDa

Preparation & Storage

Storage: Store at -20°C. Avoid freeze / thaw cycles. Buffer: PBS containing 50% glycerol and 0.05% BSA, preserved with proclin300 or sodium azide (as specified on the Certificate of Analysis), pH 7.3.

Store Bradford Reagent at Room Temperature for 1 Year.

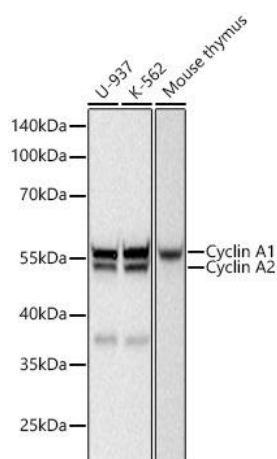
Positive Sample: U-937, K-562, Mouse thymus

Recommended Dilutions:

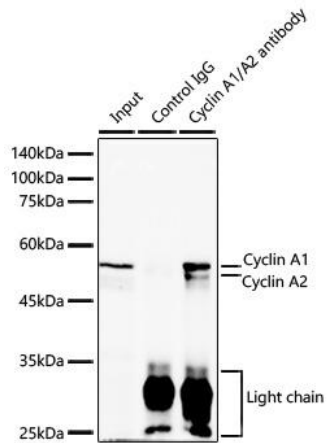
WB	1:1000 - 1:5000
IP	0.5µg-4µg antibody for 400µg-600µg extracts of whole cells
ELISA	Recommended starting concentration is 1 µg/mL. Please optimize the concentration based on your specific assay requirements.

Protein Quantification (Optional): To quantify total protein levels, use the Bradford Reagent included in this kit. Visit <https://www.assaygenie.com/bradford-protein-assay-protocol/> to view the full protocol

Validation Data



Western blot analysis of various lysates using Cyclin / Rabbit mAb (CAB2635) at 1:5000 dilution incubated at room temperature for 1.5 hours. Secondary antibody: HRP-conjugated Goat anti-Rabbit IgG (H+L) (CABS014) at 1:10000 dilution. Lysates/proteins: 25 µg per lane. Blocking buffer: 3% nonfat dry milk in TBST. Detection: ECL Basic Kit (AbGn00020). Exposure time: 90 s.



Immunoprecipitation analysis of 600 μ g extracts of Mouse thymus using 3 μ g Cyclin / Rabbit mAb (CAB2635). Western blot was performed from the immunoprecipitate using Cyclin / Rabbit mAb (CAB2635) at a dilution of 1:1000.