

## [KO Validated] CDKN1A/p21CIP1 Antibody

CAB2691

### Description

---

This [KO Validated] CDKN1A/p21CIP1 Antibody is supplied as a kit for advanced applications. The kit includes Bradford Reagent to quantify total protein concentration for accurate sample normalization (Optional).

### Product Information

---

<b>SKU:</b>	CAB2691
<b>Contents:</b>	20 $\mu$ L, 100 $\mu$ L Bradford Reagent: 1 vial (2ml)
<b>Category:</b>	Polyclonal Antibody
<b>Synonyms:</b>	P21, CIP1, SDI1, WAF1, CAP20, CDKN1, MDA-6, p21CIP1, CDKN1A/p21CIP1
<b>Clone:</b>	-
<b>Applications:</b>	WB IHC-P IP ELISA
<b>Conjugation:</b>	Unconjugated
<b>Reactivity:</b>	Human, Mouse

### Antibody Data

---

<b>Gene ID:</b>	1026
<b>Uniprot:</b>	AB_2863018
<b>Host Species:</b>	Rabbit
<b>Purification:</b>	Affinity purification
<b>Observed MW:</b>	18kDa(Mouse)/21kDa(Human/Rat)/21KD
<b>Calculated MW:</b>	18kDa

## Preparation & Storage

**Storage:** Store at -20°C. Avoid freeze / thaw cycles. Buffer: PBS with 0.09% Sodium azide, 50% glycerol, pH 7.3.

Store Bradford Reagent at Room Temperature for 1 Year.

**Positive Sample:** MCF7, 293T, Mouse spleen, MCF7

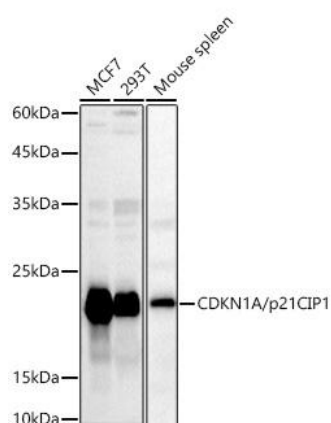
**Recommended Dilutions:**

<b>WB</b>	1:500 - 1:1000
<b>IHC-P</b>	1:50 - 1:200
<b>IP</b>	0.5µg-4µg antibody for 200µg-400µg extracts of whole cells
<b>ELISA</b>	Recommended starting concentration is 1 µg/mL. Please optimize the concentration based on your specific assay requirements.

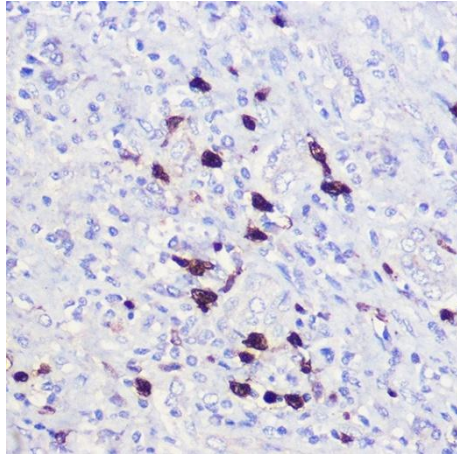
**Protein Quantification (Optional):**

To quantify total protein levels, use the Bradford Reagent included in this kit. Visit <https://www.assaygenie.com/bradford-protein-assay-protocol/> to view the full protocol

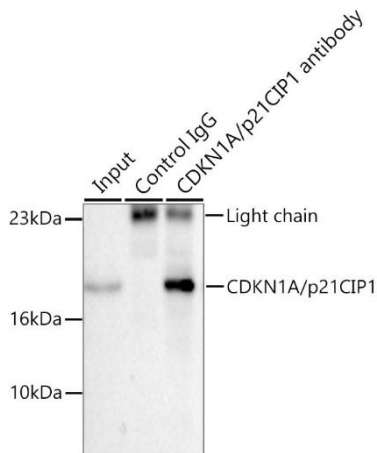
## Validation Data



Western blot analysis of various lysates using CDKN1A/p21CIP1 Rabbit pAb (CAB2691) at 1:1000 dilution. Secondary antibody: HRP-conjugated Goat anti-Rabbit IgG (H+L) (CABS014) at 1:10000 dilution. Lysates/proteins: 25µg per lane. Blocking buffer: 3% nonfat dry milk in TBST. Detection: ECL Basic Kit (AbGn00020). Exposure time: 180s.



Immunohistochemistry analysis of paraffin-embedded Human liver using CDKN1A/p21CIP1 Rabbit pAb (CAB2691) at dilution of 1:100 (40x lens). High pressure antigen retrieval performed with 0.01M Citrate buffer (pH 6.0) prior to IHC staining.



Immunoprecipitation of CDKN1A/p21CIP1 from 200 µg extracts of cells was performed using 0.5 µg of CDKN1A/p21CIP1 Rabbit pAb (CAB2691). Rabbit IgG isotype control (CABC042) was used to precipitate the Control IgG sample. IP samples were eluted with 1X Laemmli Buffer. The Input lane represents 10% of the total input. Western blot analysis of immunoprecipitates was conducted using CDKN1A/p21CIP1 Rabbit pAb (CAB2691) at a dilution of 1:500.