

IL1 β Rabbit Monoclonal Antibody

CAB27676

Description

This IL1 β Rabbit Monoclonal Antibody is supplied as a kit for advanced applications. The kit includes Bradford Reagent to quantify total protein concentration for accurate sample normalization (Optional).

Product Information

SKU:	CAB27676
Size:	100 μ L
Contents:	IL1 β Rabbit Monoclonal Antibody: 1 Vial (100 μ L) Bradford Reagent: 1 vial (2ml)
Category:	SMab Recombinant Monoclonal Antibody
Synonyms:	IL-1b; IL-1beta; IL1 β
Applications:	WB, IF/ICC, IHC-P, ELISA
Reactivity:	Human, Mouse, Rat

Antibody Data

Gene ID:	16176
Uniprot:	P10749
Immunogen:	Recombinant protein (or fragment). This information is considered to be commercially sensitive.
Isotype:	IgG
Host Species:	Rabbit
Purification:	Affinity purification

Observed MW: 31kDa

Calculated MW: 31kDa

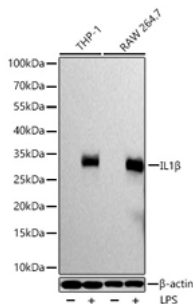
Preparation & Storage

Storage: Store at -20°C. Avoid freeze / thaw cycles.
Buffer: PBS containing 50% glycerol and 0.05% BSA, preserved with proclin300 or sodium azide (as specified on the Certificate of Analysis), pH 7.3.
Store Bradford Reagent at Room Temperature for 1 Year.

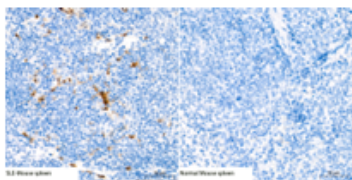
Recommended Dilutions: WB (1:2000-1:4000)
IF/ICC (1:100-1:200)
IHC-P (1:200-1:800)

Protein Quantification (Optional): To quantify total protein levels, use the Bradford Reagent included in this kit. Visit <https://www.assaygenie.com/bradford-protein-assay-protocol/> to view the full protocol

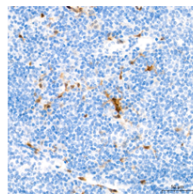
Validation Data



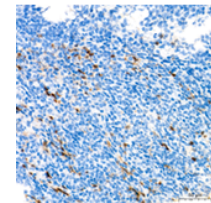
Western blot analysis of various lysates using IL1 β Rabbit mAb (CAB27676) at 1:4000 dilution incubated at room temperature for 1.5 hours. THP-1 and Raw264.7 cells were treated with LPS (1 μ g/mL) at 37°C for 8 hours. Secondary antibody: HRP-conjugated Goat anti-Rabbit IgG (H+L) at 1:10000 dilution. Lysates/proteins: 30 μ g per lane. Blocking buffer: 3% nonfat dry milk in TBST. Detection: ECL Basic Kit. Exposure time: 90s.



Immunohistochemistry analysis of paraffin-embedded SLE Mouse spleen and normal Mouse spleen tissue using IL1 β Rabbit mAb (CAB27676) at a dilution of 1:500 (40x lens). High

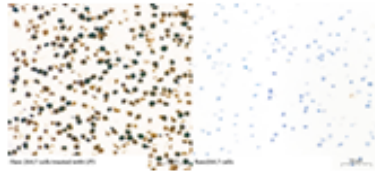


Immunohistochemistry analysis of paraffin-embedded SLE Mouse spleen tissue using IL1 β Rabbit mAb (CAB27676) at a dilution of 1:500 (40x lens). High



Immunohistochemistry analysis of paraffin-embedded SLE Mouse thymus tissue using IL1 β Rabbit mAb (CAB27676) at a dilution of 1:500 (40x

pressure antigen retrieval performed with 0.01M Tris-EDTA Buffer (pH 9.0) prior to IHC staining



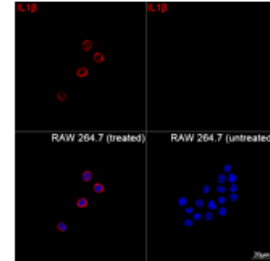
Immunohistochemistry analysis of paraffin-embedded Raw264.7 and Raw264.7 treated with LPS using IL1 β Rabbit mAb (CAB27676) at a dilution of 1:500 (40x lens). High pressure antigen retrieval performed with 0.01M Tris-EDTA Buffer (pH 9.0) prior to IHC staining.

pressure antigen retrieval performed with 0.01M Tris-EDTA Buffer (pH 9.0) prior to IHC staining.

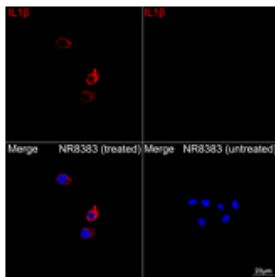


Immunohistochemistry analysis of paraffin-embedded THP-1 and THP-1 treated with LPS using IL1 β Rabbit mAb (CAB27676) at a dilution of 1:500 (40x lens). High pressure antigen retrieval performed with 0.01M TrisEDTA Buffer (pH 9.0) prior to IHC staining.

lens). High pressure antigen retrieval performed with 0.01M Tris-EDTA Buffer (pH 9.0) prior to IHC staining.



Confocal imaging of RAW 264.7 cells (treated with BFA and LPS) and RAW 264.7 cells (untreated) using IL1 β Rabbit mAb (CAB27676, dilution 1:200) followed by a further incubation with Cy3 Goat Anti-Rabbit IgG (H+L) (dilution 1:500) (Red). DAPI was used for nuclear staining (Blue). Objective: 100x.



Confocal imaging of NR8383 cells (treated with BFA and LPS) and NR8383 cells (untreated) using IL1 β Rabbit mAb (CAB27676, dilution 1:200) followed by a further incubation with Cy3 Goat Anti-Rabbit IgG (H+L) (dilution 1:500) (Red). DAPI was used for nuclear staining (Blue). Objective: 100x

Manufacturers Statement

This final kit system is assembled and quality-released by Assay Genie Limited.