

ACHE Antibody

CAB2806

Description

This ACHE Antibody is supplied as a kit for advanced applications. The kit includes Bradford Reagent to quantify total protein concentration for accurate sample normalization (Optional).

Product Information

| | |
|----------------------|---|
| SKU: | CAB2806 |
| Contents: | 20 μ L, 100 μ L Bradford Reagent: 1 vial (2ml) |
| Category: | Polyclonal Antibody |
| Synonyms: | YT, ACEE, ARACHE, N-ACHE, ACHE |
| Clone: | - |
| Applications: | WB IF/ICC ELISA |
| Conjugation: | Unconjugated |
| Reactivity: | Human, Mouse, Rat |

Antibody Data

| | |
|-----------------------|-----------------------|
| Gene ID: | 43 |
| Uniprot: | AB_2764644 |
| Host Species: | Rabbit |
| Purification: | Affinity purification |
| Observed MW: | 75kDa |
| Calculated MW: | 68kDa |

Preparation & Storage

Storage: Store at -20°C. Avoid freeze / thaw cycles. Buffer: PBS containing 50% glycerol, preserved with proclin300 or sodium azide (as specified on the Certificate of Analysis), pH 7.3.

Store Bradford Reagent at Room Temperature for 1 Year.

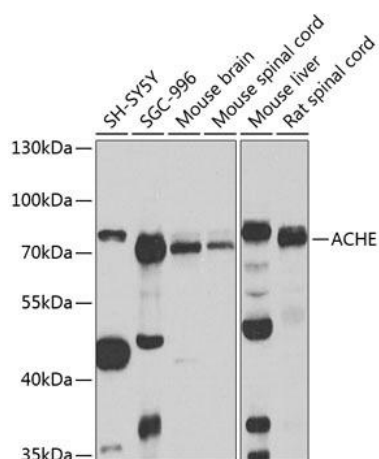
Positive Sample: SH-SY5Y, SGC996, Mouse brain, Mouse spinal cord, Mouse liver, Rat spinal cord

Recommended Dilutions:

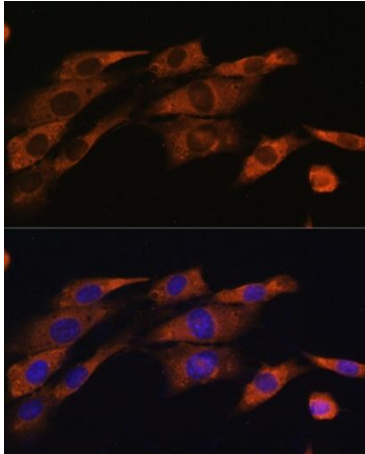
| | |
|---------------|---|
| WB | 1:500 - 1:2000 |
| IF/ICC | 1:50 - 1:200 |
| ELISA | Recommended starting concentration is 1 µg/mL. Please optimize the concentration based on your specific assay requirements. |

Protein Quantification (Optional): To quantify total protein levels, use the Bradford Reagent included in this kit. Visit <https://www.assaygenie.com/bradford-protein-assay-protocol/> to view the full protocol

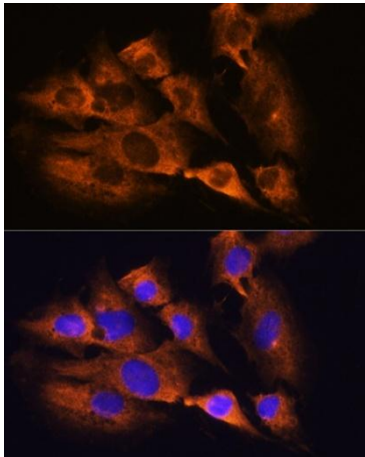
Validation Data



Western blot analysis of various lysates using ACHE Rabbit pAb (CAB2806) at 1:1000 dilution. Secondary antibody: HRP-conjugated Goat anti-Rabbit IgG (H+L) (CABS014) at 1:10000 dilution. Lysates/proteins: 25µg per lane. Blocking buffer: 3% nonfat dry milk in TBST. Detection: ECL Basic Kit (AbGn00020). Exposure time: 90s.



Immunofluorescence analysis of NIH/3T3 cells using ACHE Rabbit pAb (CAB2806) at dilution of 1:100. Secondary antibody: Cy3-conjugated Goat anti-Rabbit IgG (H+L) (CABS007) at 1:500 dilution. Blue: DAPI for nuclear staining.



Immunofluorescence analysis of cells using ACHE Rabbit pAb (CAB2806) at dilution of 1:100. Secondary antibody: Cy3-conjugated Goat anti-Rabbit IgG (H+L) (CABS007) at 1:500 dilution. Blue: DAPI for nuclear staining.