

RUNX2 Antibody

CAB2851

Description

This RUNX2 Antibody is supplied as a kit for advanced applications. The kit includes Bradford Reagent to quantify total protein concentration for accurate sample normalization (Optional).

Product Information

SKU:	CAB2851
Contents:	20 µL, 100 µL Bradford Reagent: 1 vial (2ml)
Category:	Polyclonal Antibody
Synonyms:	CCD, AML3, CCD1, CLCD, OSF2, CBFA1, OSF-2, PEA2aA, PEBP2aA, CBF-alpha-1, RUNX2
Clone:	-
Applications:	WB IHC-P ELISA IF-P
Conjugation:	Unconjugated
Reactivity:	Human, Mouse, Rat

Antibody Data

Gene ID:	860
Uniprot:	AB_2764676
Host Species:	Rabbit
Purification:	Affinity purification
Observed MW:	60kDa
Calculated MW:	57kDa

Preparation & Storage

Storage: Store at -20°C. Avoid freeze / thaw cycles. Buffer: PBS containing 50% glycerol, preserved with proclin300 or sodium azide (as specified on the Certificate of Analysis), pH 7.3.

Store Bradford Reagent at Room Temperature for 1 Year.

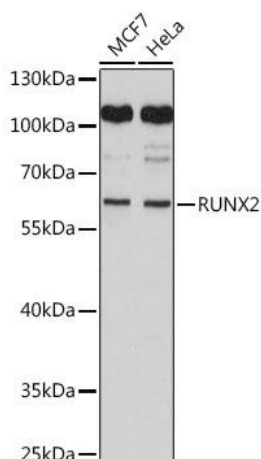
Positive Sample: MCF7, HeLa, Mouse testis

Recommended Dilutions:

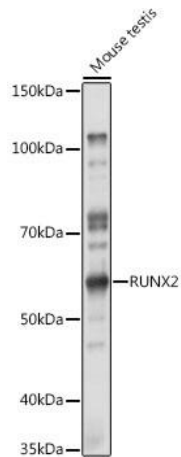
WB	1:500 - 1:1000
IF-P	1:50 - 1:200
IHC-P	1:50 - 1:200
ELISA	Recommended starting concentration is 1 µg/mL. Please optimize the concentration based on your specific assay requirements.

Protein Quantification (Optional): To quantify total protein levels, use the Bradford Reagent included in this kit. Visit <https://www.assaygenie.com/bradford-protein-assay-protocol/> to view the full protocol

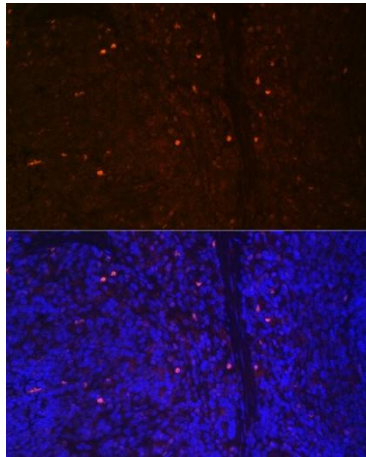
Validation Data



Western blot analysis of various lysates using RUNX2 Rabbit pAb (CAB2851) at 1:2000 dilution. Secondary antibody: HRP-conjugated Goat anti-Rabbit IgG (H+L) (CABS014) at 1:10000 dilution. Lysates/proteins: 25µg per lane. Blocking buffer: 3% nonfat dry milk in TBST. Detection: ECL Basic Kit (AbGn00020). Exposure time: 5s.



Western blot analysis of lysates from Mouse testis, using RUNX2 Rabbit pAb (CAB2851) at 1:1000 dilution. Secondary antibody: HRP-conjugated Goat anti-Rabbit IgG (H+L) (CABS014) at 1:10000 dilution. Lysates/proteins: 25µg per lane. Blocking buffer: 3% nonfat dry milk in TBST. Detection: ECL Basic Kit (AbGn00020). Exposure time: 10s.



Immunofluorescence analysis of paraffin-embedded rat spleen using RUNX2 Rabbit pAb (CAB2851) at dilution of 1:100 (40x lens). Secondary antibody: Cy3-conjugated Goat anti-Rabbit IgG (H+L) (CABS007) at 1:500 dilution. Blue: DAPI for nuclear staining.