

IL2RA Antibody

CAB2984

Description

This IL2RA Antibody is supplied as a kit for advanced applications. The kit includes Bradford Reagent to quantify total protein concentration for accurate sample normalization (Optional).

Product Information

SKU:	CAB2984
Contents:	20 μ L, 100 μ L Bradford Reagent: 1 vial (2ml)
Category:	Polyclonal Antibody
Synonyms:	p55, CD25, IL2R, IMD41, TCGFR, IDDM10
Clone:	-
Applications:	WB IHC-P FC ELISA IF-P
Conjugation:	Unconjugated
Reactivity:	Human, Mouse, Rat

Antibody Data

Gene ID:	3559
Uniprot:	AB_2764795
Host Species:	Rabbit
Purification:	Affinity purification
Observed MW:	60 kDa
Calculated MW:	31 kDa

Preparation & Storage

Storage: Store at -20°C. Avoid freeze / thaw cycles. Buffer: PBS containing 50% glycerol, preserved with proclin300 or sodium azide (as specified on the Certificate of Analysis), pH7.3.

Store Bradford Reagent at Room Temperature for 1 Year.

Positive Sample: Rat spleen, Rat lung

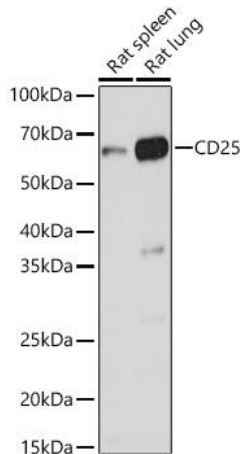
Recommended Dilutions:

WB	1:500 - 1:5000
IF-P	1:50 - 1:200
IHC-P	1:50 - 1:200
FC	1:50 - 1:200
ELISA	Recommended starting concentration is 1 µg/mL. Please optimize the concentration based on your specific assay requirements.

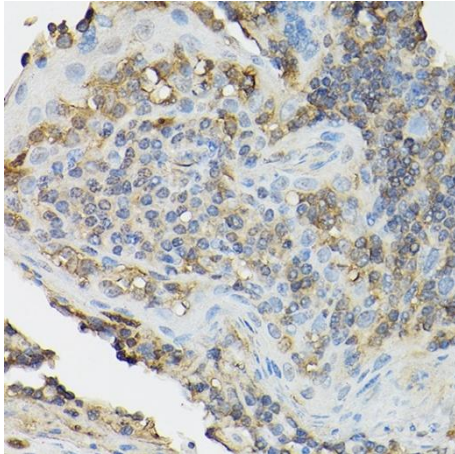
Protein Quantification (Optional):

To quantify total protein levels, use the Bradford Reagent included in this kit. Visit <https://www.assaygenie.com/bradford-protein-assay-protocol/> to view the full protocol

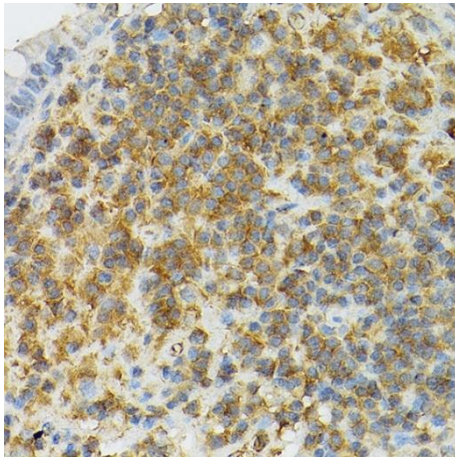
Validation Data



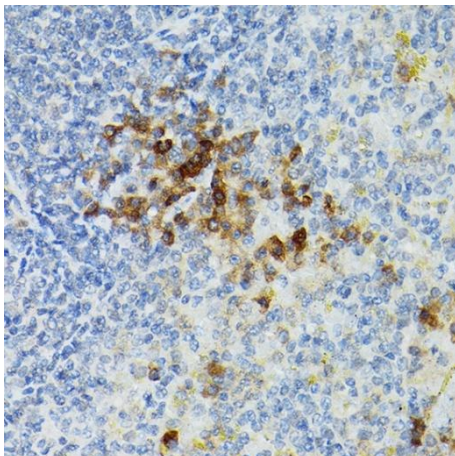
Western blot analysis of various lysates using Rabbit pAb (CAB2984) at 1:1000 dilution. Secondary antibody: HRP-conjugated Goat anti-Rabbit IgG (H+L) (CABS014) at 1:10000 dilution. Lysates/proteins: 25µg per lane. Blocking buffer: 3% nonfat dry milk in TBST. Detection: ECL Basic Kit (AbGn00020). Exposure time: 3s.



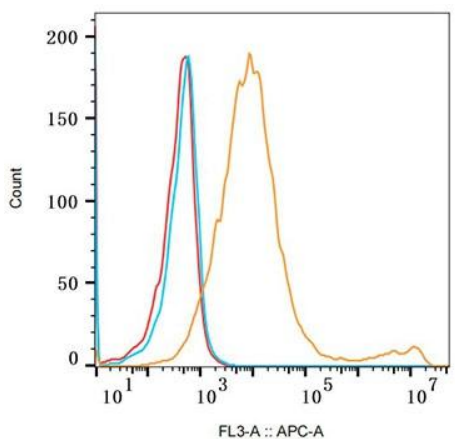
Immunohistochemistry analysis of paraffin-embedded Human tonsil using Rabbit pAb (CAB2984) at dilution of 1:100 (40x lens). High pressure antigen retrieval performed with 0.01M Citrate buffer (pH 6.0) prior to IHC staining.



Immunohistochemistry analysis of paraffin-embedded Human gastric cancer tissue using Rabbit pAb (CAB2984) at a dilution of 1:25 (40x lens). High pressure antigen retrieval was performed with 0.01 M citrate buffer (pH 6.0) prior to IHC staining.



Immunohistochemistry analysis of paraffin-embedded Mouse spleen tissue using Rabbit pAb (CAB2984) at a dilution of 1:25 (40x lens). High pressure antigen retrieval was performed with 0.01 M citrate buffer (pH 6.0) prior to IHC staining.



Flow cytometry: 293F Transfection cells(+) and 293F cells(-) were stained with Rabbit IgG isotype control (CABC042, 10 µg/mL, blue line) or Rabbit pAb (CAB2984, 2.5µg/mL orange line), followed by Goat anti-Rabbit pAb Alexa Fluor 647 (, 1:600 dilution) staining. Non-fluorescently stained Daudi cells was used as blank control (red line).

