

## MYSM1 Antibody

CAB3102

### Description

---

This MYSM1 Antibody is supplied as a kit for advanced applications. The kit includes Bradford Reagent to quantify total protein concentration for accurate sample normalization (Optional).

### Product Information

---

<b>SKU:</b>	CAB3102
<b>Contents:</b>	20 µL, 100 µL Bradford Reagent: 1 vial (2ml)
<b>Category:</b>	Polyclonal Antibody
<b>Synonyms:</b>	2ADUB, BMFS4, 2A-DUB, MYSM1
<b>Clone:</b>	-
<b>Applications:</b>	<span>WB</span> <span>ELISA</span>
<b>Conjugation:</b>	Unconjugated
<b>Reactivity:</b>	Human, Mouse, Rat

### Antibody Data

---

<b>Gene ID:</b>	114803
<b>Uniprot:</b>	AB_2764902
<b>Host Species:</b>	Rabbit
<b>Purification:</b>	Affinity purification
<b>Observed MW:</b>	105kDa
<b>Calculated MW:</b>	95kDa

## Preparation & Storage

**Storage:** Store at -20°C. Avoid freeze / thaw cycles. Buffer: PBS with 0.01% thimerosal, 50% glycerol, pH 7.3.

Store Bradford Reagent at Room Temperature for 1 Year.

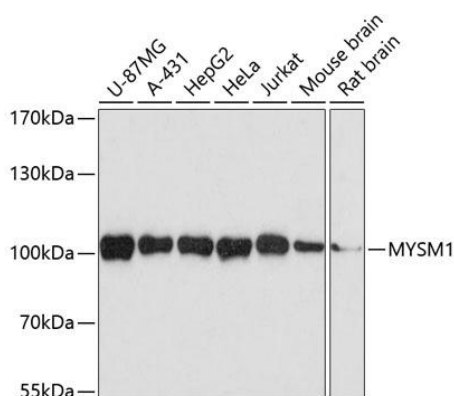
**Positive Sample:** U-87MG, A-431, HepG2, HeLa, Jurkat, Mouse brain, Rat brain

**Recommended Dilutions:**

<b>WB</b>	1:500 - 1:2000
<b>ELISA</b>	Recommended starting concentration is 1 µg/mL. Please optimize the concentration based on your specific assay requirements.

**Protein Quantification (Optional):** To quantify total protein levels, use the Bradford Reagent included in this kit. Visit <https://www.assaygenie.com/bradford-protein-assay-protocol/> to view the full protocol

## Validation Data



Western blot analysis of various lysates using MYSM1 Rabbit pAb (CAB3102) at 1:3000 dilution. Secondary antibody: HRP-conjugated Goat anti-Rabbit IgG (H+L) (CABS014) at 1:10000 dilution. Lysates/proteins: 25µg per lane. Blocking buffer: 3% nonfat dry milk in TBST. Detection: ECL Basic Kit (AbGn00020). Exposure time: 90s.