

## PP2A Catalytic beta Antibody

CAB3122

### Description

---

This PP2A Catalytic beta Antibody is supplied as a kit for advanced applications. The kit includes Bradford Reagent to quantify total protein concentration for accurate sample normalization (Optional).

### Product Information

---

|                      |   |
|----------------------|---|
| <b>SKU:</b>          | CAB3122   |
| <b>Contents:</b>     | 20 µL, 100 µL<br>Bradford Reagent: 1 vial (2ml) |
| <b>Category:</b>     | Polyclonal Antibody                             |
| <b>Synonyms:</b>     | PP2CB, PP2Abeta, PP2A Catalytic β               |
| <b>Clone:</b>        | -   |
| <b>Applications:</b> | WB IHC-P IF/ICC ELISA                           |
| <b>Conjugation:</b>  | Unconjugated                                    |
| <b>Reactivity:</b>   | Human, Mouse, Rat                               |

### Antibody Data

---

|                       |                       |
|-----------------------|-----------------------|
| <b>Gene ID:</b>       | 5516                  |
| <b>Uniprot:</b>       | AB_2764919            |
| <b>Host Species:</b>  | Rabbit                |
| <b>Purification:</b>  | Affinity purification |
| <b>Observed MW:</b>   | 36kDa                 |
| <b>Calculated MW:</b> | 36kDa                 |

## Preparation & Storage

**Storage:** Store at -20°C. Avoid freeze / thaw cycles. Buffer: PBS with 0.09% Sodium azide, 50% glycerol, pH 7.3.

Store Bradford Reagent at Room Temperature for 1 Year.

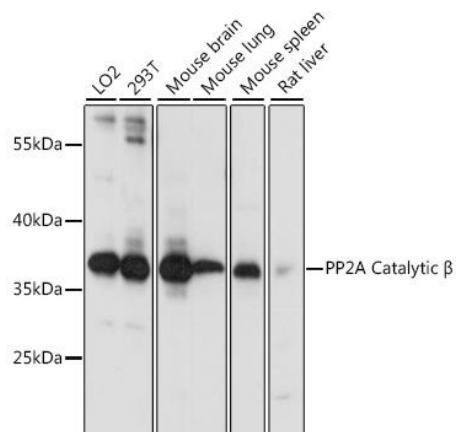
**Positive Sample:** LO2, 293T, Mouse brain, Mouse lung, Mouse spleen, Rat liver

**Recommended Dilutions:**

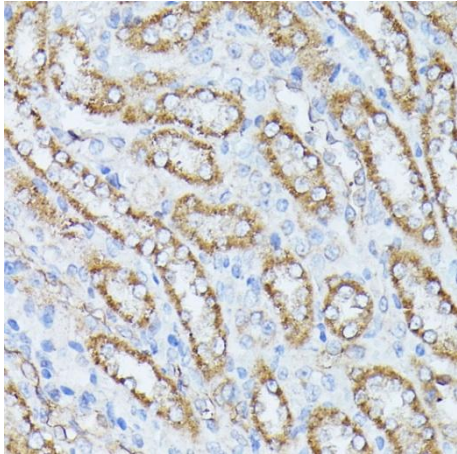
|               |   |
|---------------|---|
| <b>WB</b>     | 1:500 - 1:2000  |
| <b>IHC-P</b>  | 1:100 - 1:200   |
| <b>IF/ICC</b> | 1:50 - 1:200  |
| <b>ELISA</b>  | Recommended starting concentration is 1 µg/mL. Please optimize the concentration based on your specific assay requirements. |

**Protein Quantification (Optional):** To quantify total protein levels, use the Bradford Reagent included in this kit. Visit <https://www.assaygenie.com/bradford-protein-assay-protocol/> to view the full protocol

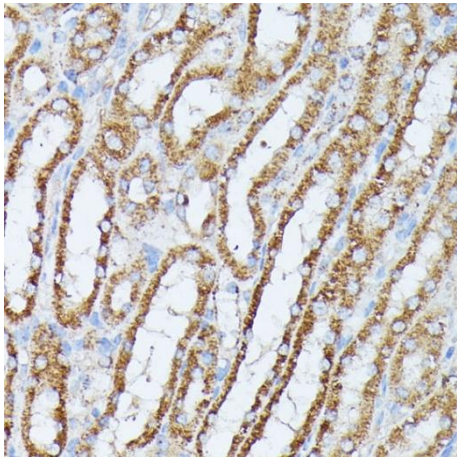
## Validation Data



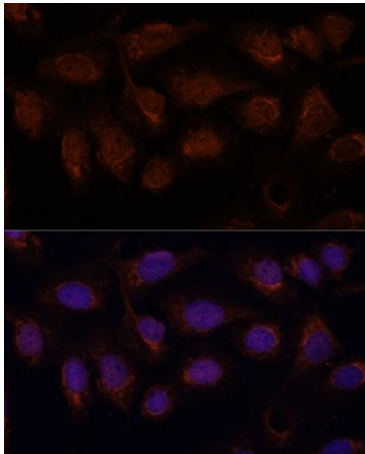
Western blot analysis of various lysates using PP2A Catalytic β Rabbit pAb (CAB3122) at 1:1000 dilution. Secondary antibody: HRP-conjugated Goat anti-Rabbit IgG (H+L) (CABS014) at 1:10000 dilution. Lysates/proteins: 25µg per lane. Blocking buffer: 3% nonfat dry milk in TBST. Detection: ECL Basic Kit (AbGn00020). Exposure time: 30s.



Immunohistochemistry analysis of paraffin-embedded Rat kidney using PP2A Catalytic  $\beta$  Rabbit pAb (CAB3122) at dilution of 1:100 (40x lens). Microwave antigen retrieval performed with 0.01M PBS Buffer (pH 7.2) prior to IHC staining.



Immunohistochemistry analysis of paraffin-embedded Mouse kidney using PP2A Catalytic  $\beta$  Rabbit pAb (CAB3122) at dilution of 1:100 (40x lens). Microwave antigen retrieval performed with 0.01M PBS Buffer (pH 7.2) prior to IHC staining.



Immunofluorescence analysis of U-2 OS cells using PP2A Catalytic  $\beta$  Rabbit pAb (CAB3122) at dilution of 1:100. Secondary antibody: Cy3-conjugated Goat anti-Rabbit IgG (H+L) (CABS007) at 1:500 dilution. Blue: DAPI for nuclear staining.