

[KO Validated] SMARCB1/SNF5 Monoclonal Antibody

CAB3247

Description

This [KO Validated] SMARCB1/SNF5 Monoclonal Antibody is supplied as a kit for advanced applications. The kit includes Bradford Reagent to quantify total protein concentration for accurate sample normalization (Optional).

Product Information

SKU:	CAB3247
Contents:	20 µL, 100 µL Bradford Reagent: 1 vial (2ml)
Category:	Monoclonal Antibody
Synonyms:	RDT, CSS3, INI1, SNF5, Snr1, BAF47, INI-1, MRD15, RTPS1, Sfh1p, hSNFS, SNF5L1, SWNTS1, PPP1R144, F5
Clone:	ARC53139
Applications:	WB IHC-P IP ELISA
Conjugation:	Unconjugated
Reactivity:	Human, Mouse, Rat

Antibody Data

Gene ID:	6598
Uniprot:	AB_2863030
Host Species:	Rabbit
Purification:	Affinity purification
Observed MW:	44kDa/
Calculated MW:	44kDa

Preparation & Storage

Storage: Store at -20°C. Avoid freeze / thaw cycles. Buffer: PBS containing 50% glycerol and 0.05% BSA, preserved with proclin300 or sodium azide (as specified on the Certificate of Analysis), pH 7.3.

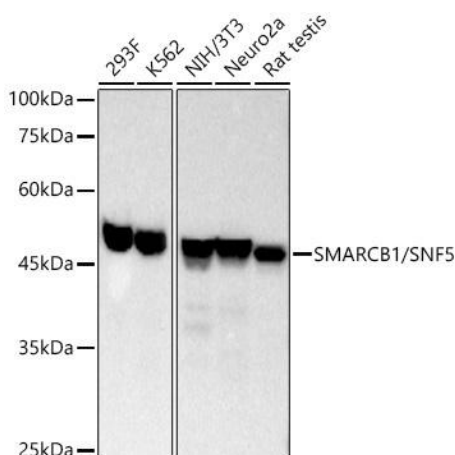
Store Bradford Reagent at Room Temperature for 1 Year.

Positive Sample: 293F, K-562, NIH/3T3, Neuro-2a, Rat testis, 293F

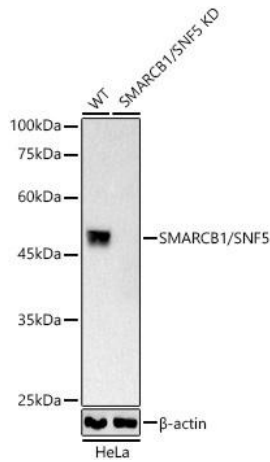
Recommended Dilutions:	WB	1:1000 - 1:5000
	IHC-P	1:50 - 1:200
	IP	0.5µg-4µg antibody for 200µg-400µg extracts of whole cells
	ELISA	Recommended starting concentration is 1 µg/mL. Please optimize the concentration based on your specific assay requirements.

Protein Quantification (Optional): To quantify total protein levels, use the Bradford Reagent included in this kit. Visit <https://www.assaygenie.com/bradford-protein-assay-protocol/> to view the full protocol

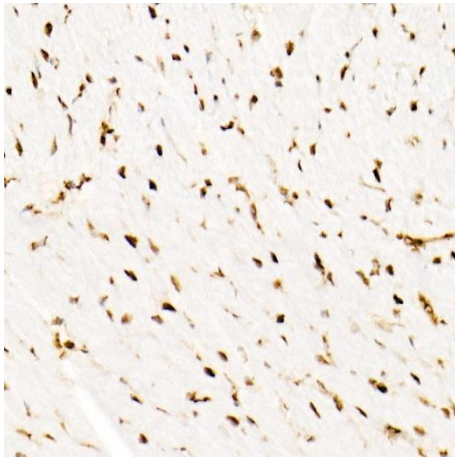
Validation Data



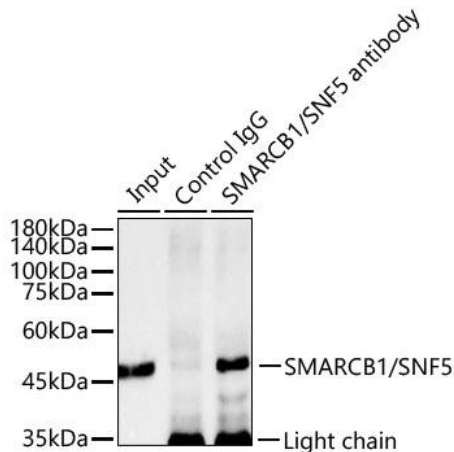
Western blot analysis of various lysates, using SMARCB1/ Rabbit mAb (CAB3247) at 1:2000 dilution. Secondary antibody: HRP-conjugated Goat anti-Rabbit IgG (H+L) (CABS014) at 1:2000 dilution. Lysates/proteins: 25µg per lane. Blocking buffer: 3% nonfat dry milk in TBST. Detection: ECL Basic Kit (AbGn00020). Exposure time: 10s.



Western blot analysis of lysates from wild type (WT) and SMARCB1/ Rabbit mAb knockout (KO) HeLa (KO) cells, using SMARCB1/ Rabbit mAb (CAB3247) at 1:2000 dilution. Secondary antibody: HRP-conjugated Goat anti-Rabbit IgG (H+L) (CABS014) at 1:10000 dilution. Lysates/proteins: 25 µg per lane. Blocking buffer: 3% nonfat dry milk in TBST. Detection: ECL Basic Kit (AbGn00020). Exposure time: 10s.



Immunohistochemistry analysis of paraffin-embedded Mouse heart using [KO Validated] SMARCB1/ Rabbit mAb (CAB3247) at dilution of 1:100 (40x lens). High pressure antigen retrieval performed with 0.01M Tris/EDTA Buffer (pH 9.0) prior to IHC staining.



Immunoprecipitation of from 300 µg extracts of 293F cells was performed using 3 µg of [KO Validated] SMARCB1/ Rabbit mAb (CAB3247). Rabbit IgG isotype control (CABC042) was used to precipitate the Control IgG sample. IP samples were eluted with 1X Laemmli Buffer. The Input lane represents 10% of the total input. Western blot analysis of immunoprecipitates was conducted using [KO Validated] SMARCB1/ Rabbit mAb (CAB3247) at a dilution of 1:12000.