

## TAB1 Monoclonal Antibody

CAB3306

### Description

---

This TAB1 Monoclonal Antibody is supplied as a kit for advanced applications. The kit includes Bradford Reagent to quantify total protein concentration for accurate sample normalization (Optional).

### Product Information

---

|                      |  |
|----------------------|--|
| <b>SKU:</b>          | CAB3306  |
| <b>Contents:</b>     | 20 µL, 100 µL<br>Bradford Reagent: 1 vial (2ml)        |
| <b>Category:</b>     | Monoclonal Antibody                                    |
| <b>Synonyms:</b>     | 3'-Tab1, MAP3K7IP1, TAB1                               |
| <b>Clone:</b>        | ARC1943  |
| <b>Applications:</b> | <span>WB</span> <span>IF/ICC</span> <span>ELISA</span> |
| <b>Conjugation:</b>  | Unconjugated   |
| <b>Reactivity:</b>   | Human, Mouse, Rat                                      |

### Antibody Data

---

|                       |                       |
|-----------------------|-----------------------|
| <b>Gene ID:</b>       | 10454                 |
| <b>Uniprot:</b>       | AB_2863038            |
| <b>Host Species:</b>  | Rabbit                |
| <b>Purification:</b>  | Affinity purification |
| <b>Observed MW:</b>   | 55kDa                 |
| <b>Calculated MW:</b> | 55kDa                 |

## Preparation & Storage

**Storage:** Store at -20°C. Avoid freeze / thaw cycles. Buffer: PBS containing 50% glycerol and 0.05% BSA, preserved with proclin300 or sodium azide (as specified on the Certificate of Analysis), pH 7.3.

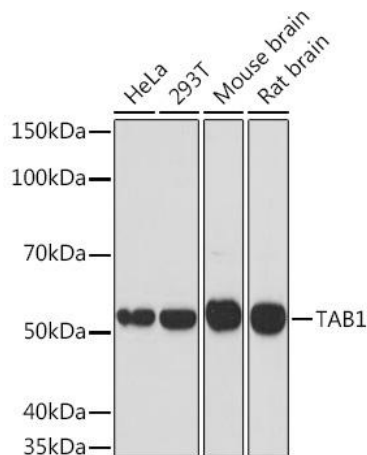
Store Bradford Reagent at Room Temperature for 1 Year.

**Positive Sample:** HeLa, 293T, Mouse brain, Rat brain

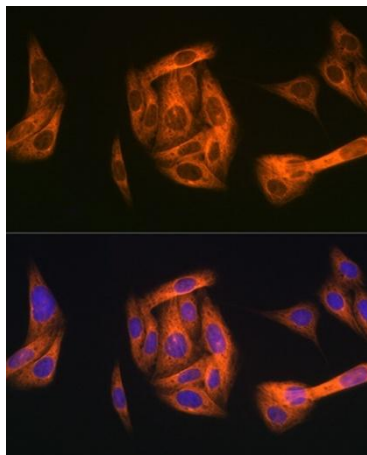
|                               |               |   |
|-------------------------------|---------------|---|
| <b>Recommended Dilutions:</b> | <b>WB</b>     | 1:500 - 1:2000  |
|                               | <b>IF/ICC</b> | 1:50 - 1:200  |
|                               | <b>ELISA</b>  | Recommended starting concentration is 1 µg/mL. Please optimize the concentration based on your specific assay requirements. |

**Protein Quantification (Optional):** To quantify total protein levels, use the Bradford Reagent included in this kit. Visit <https://www.assaygenie.com/bradford-protein-assay-protocol/> to view the full protocol

## Validation Data



Western blot analysis of various lysates using Rabbit mAb (CAB3306) at 1:1000 dilution. Secondary antibody: HRP-conjugated Goat anti-Rabbit IgG (H+L) (CABS014) at 1:10000 dilution. Lysates/proteins: 25µg per lane. Blocking buffer: 3% nonfat dry milk in TBST. Detection: ECL Basic Kit (AbGn00020). Exposure time: 90s.



Immunofluorescence analysis of U-2 OS cells using Rabbit mAb (CAB3306) at dilution of 1:100 (40x lens). Secondary antibody: Cy3-conjugated Goat anti-Rabbit IgG (H+L) (CABS007) at 1:500 dilution. Blue: DAPI for nuclear staining.