

RPA70/RPA1 Monoclonal Antibody

CAB3367

Description

This RPA70/RPA1 Monoclonal Antibody is supplied as a kit for advanced applications. The kit includes Bradford Reagent to quantify total protein concentration for accurate sample normalization (Optional).

Product Information

SKU:	CAB3367
Contents:	20 μ L, 100 μ L Bradford Reagent: 1 vial (2ml)
Category:	Monoclonal Antibody
Synonyms:	HSSB, RF-A, RP-A, REPA1, RPA70, MST075, PFBMFT6, RPA70/RPA1
Clone:	ARC0773
Applications:	WB IP ChIP ELISA
Conjugation:	Unconjugated
Reactivity:	Human, Rat

Antibody Data

Gene ID:	6117
Uniprot:	AB_2863044
Host Species:	Rabbit
Purification:	Affinity purification
Observed MW:	70kDa
Calculated MW:	68kDa

Preparation & Storage

Storage: Store at -20°C. Avoid freeze / thaw cycles. Buffer: PBS containing 50% glycerol and 0.05% BSA, preserved with proclin300 or sodium azide (as specified on the Certificate of Analysis), pH 7.3.

Store Bradford Reagent at Room Temperature for 1 Year.

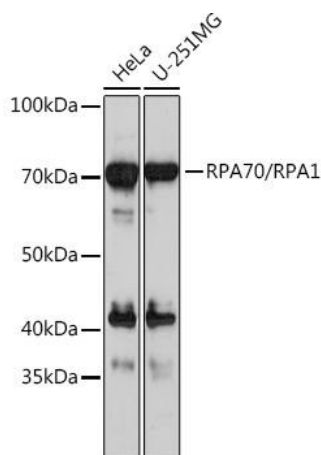
Positive Sample: HeLa, U-251 MG

Recommended Dilutions:

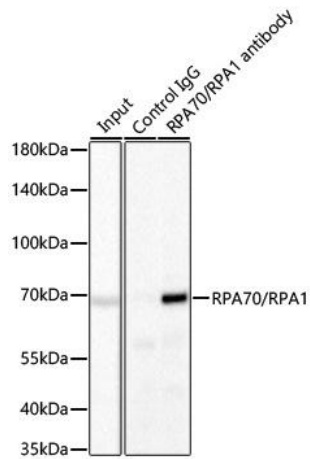
WB	1:500 - 1:2000
IP	0.5µg-4µg antibody for 200µg-400µg extracts of whole cells
ELISA	Recommended starting concentration is 1 µg/mL. Please optimize the concentration based on your specific assay requirements. ChIP 5µg antibody for 10µg-15µg of Chromatin

Protein Quantification (Optional): To quantify total protein levels, use the Bradford Reagent included in this kit. Visit <https://www.assaygenie.com/bradford-protein-assay-protocol/> to view the full protocol

Validation Data



Western blot analysis of various lysates using / Rabbit mAb (CAB3367) at 1 : 1000 dilution. Secondary antibody: HRP-conjugated Goat anti-Rabbit IgG (H+L) (CABS014) at 1:10000 dilution. Lysates/proteins: 25µg per lane. Blocking buffer: 3% nonfat dry milk in TBST. Detection: ECL Basic Kit (AbGn00020). Exposure time: 30s.



Immunoprecipitation of / from 300 μ g extracts of HeLa cells was performed using 2 μ g of / Rabbit mAb (CAB3367). Rabbit IgG isotype control (CABC005) was used to precipitate the Control IgG sample. IP samples were eluted with 1X reducing Laemmli Buffer. The Input lane represents 10% of the total input. Western blot analysis of immunoprecipitates was conducted using / Rabbit mAb (CAB3367) at a dilution of 1:1000.