

C4D Monoclonal Antibody

CAB3545

Description

This C4D Monoclonal Antibody is supplied as a kit for advanced applications. The kit includes Bradford Reagent to quantify total protein concentration for accurate sample normalization (Optional).

Product Information

SKU:	CAB3545
Contents:	20 μ L, 100 μ L Bradford Reagent: 1 vial (2ml)
Category:	Monoclonal Antibody
Synonyms:	C4, RG, C4S, CO4, C4A2, C4A3, C4A4, C4A6, C4AD, CPAMD2, Complement C4A
Clone:	ARC2037
Applications:	WB ELISA IF-P
Conjugation:	Unconjugated
Reactivity:	Human

Antibody Data

Gene ID:	720
Uniprot:	-
Host Species:	Rabbit
Purification:	Affinity purification
Observed MW:	210kDa
Calculated MW:	193kDa

Preparation & Storage

Storage: Store at -20°C. Avoid freeze / thaw cycles. Buffer: PBS containing 50% glycerol and 0.05% BSA, preserved with proclin300 or sodium azide (as specified on the Certificate of Analysis), pH 7.3.

Store Bradford Reagent at Room Temperature for 1 Year.

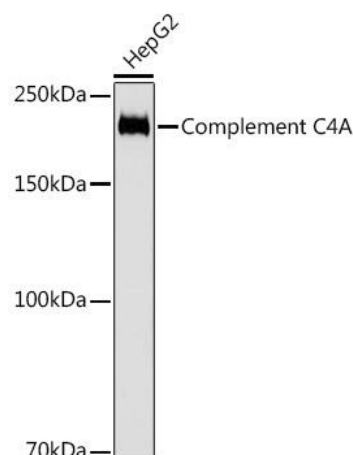
Positive Sample: Hep G2

Recommended Dilutions:

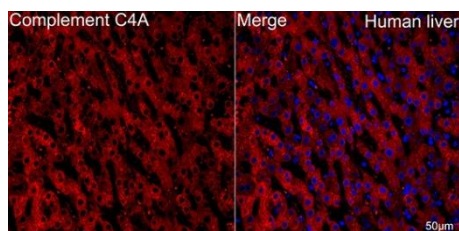
WB	1:1000 - 1:6000
IF-P	1:50 - 1:200
ELISA	Recommended starting concentration is 1 µg/mL. Please optimize the concentration based on your specific assay requirements.

Protein Quantification (Optional): To quantify total protein levels, use the Bradford Reagent included in this kit. Visit <https://www.assaygenie.com/bradford-protein-assay-protocol/> to view the full protocol

Validation Data



Western blot analysis of lysates from HepG2 cells, using Complement C4A Rabbit mAb (CAB3545) at 1:1000 dilution. Secondary antibody: HRP-conjugated Goat anti-Rabbit IgG (H+L) (CABS014) at 1:10000 dilution. Lysates/proteins: 25µg per lane. Blocking buffer: 3% nonfat dry milk in TBST. Detection: ECL Basic Kit (AbGn00020). Exposure time: 3s.



Confocal imaging of paraffin-embedded Human liver tissue using Complement C4A Rabbit mAb (CAB3545, dilution 1:100) followed by a further incubation with Cy3 Goat Anti-Rabbit IgG (H+L) (CABS007, dilution 1:500) (Red). DAPI was used for nuclear staining (Blue). Objective: 40x. Perform high pressure antigen retrieval with 0.01 M citrate buffer (pH 6.0) prior to IF staining.