

## SHIP1 Monoclonal Antibody

CAB3571

### Description

---

This SHIP1 Monoclonal Antibody is supplied as a kit for advanced applications. The kit includes Bradford Reagent to quantify total protein concentration for accurate sample normalization (Optional).

### Product Information

---

<b>SKU:</b>	CAB3571
<b>Contents:</b>	20 µL, 100 µL Bradford Reagent: 1 vial (2ml)
<b>Category:</b>	Monoclonal Antibody
<b>Synonyms:</b>	SHIP, SHIP1, SHIP-1, hp51CN, SIP-145, p150Ship
<b>Clone:</b>	ARC2047
<b>Applications:</b>	<span>WB</span> <span>IHC-P</span> <span>ELISA</span> <span>IF-P</span>
<b>Conjugation:</b>	Unconjugated
<b>Reactivity:</b>	Human, Mouse, Rat

### Antibody Data

---

<b>Gene ID:</b>	3635
<b>Uniprot:</b>	AB_2863092
<b>Host Species:</b>	Rabbit
<b>Purification:</b>	Affinity purification
<b>Observed MW:</b>	145kDa
<b>Calculated MW:</b>	133kDa

## Preparation & Storage

**Storage:** Store at -20°C. Avoid freeze / thaw cycles. Buffer: PBS containing 50% glycerol and 0.05% BSA, preserved with proclin300 or sodium azide (as specified on the Certificate of Analysis), pH 7.3.

Store Bradford Reagent at Room Temperature for 1 Year.

**Positive Sample:** Raji, U-937

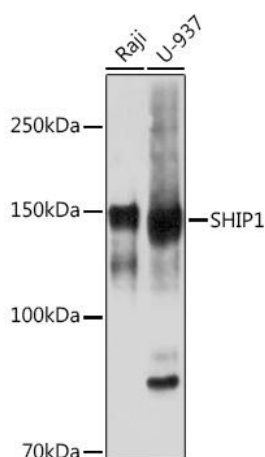
**Recommended Dilutions:**

<b>WB</b>	1:500 - 1:1000
<b>IF-P</b>	1:50 - 1:200
<b>IHC-P</b>	1:50 - 1:200
<b>ELISA</b>	Recommended starting concentration is 1 µg/mL. Please optimize the concentration based on your specific assay requirements.

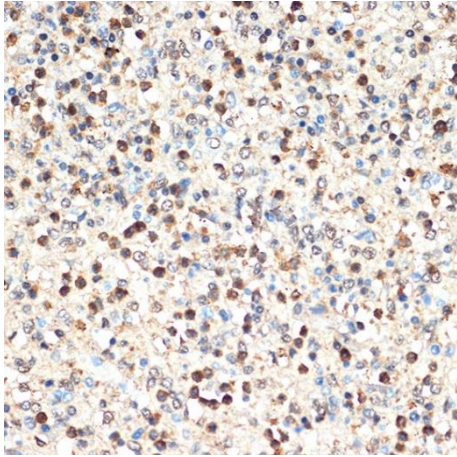
**Protein Quantification (Optional):**

To quantify total protein levels, use the Bradford Reagent included in this kit. Visit <https://www.assaygenie.com/bradford-protein-assay-protocol/> to view the full protocol

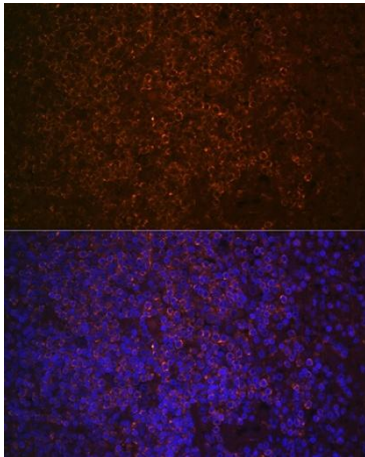
## Validation Data



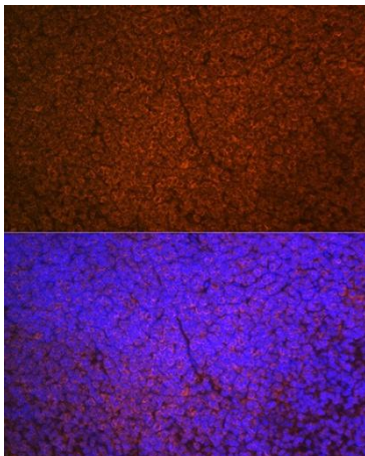
Western blot analysis of various lysates using SHIP1 Rabbit mAb (CAB3571) at 1:1000 dilution. Secondary antibody: HRP-conjugated Goat anti-Rabbit IgG (H+L) (CABS014) at 1:10000 dilution. Lysates/proteins: 25µg per lane. Blocking buffer: 3% nonfat dry milk in TBST. Detection: ECL Basic Kit (AbGn00020). Exposure time: 10s.



Immunohistochemistry analysis of paraffin-embedded Human spleen using SHIP11 Rabbit mAb (CAB3571) at dilution of 1:100 (40x lens). Microwave antigen retrieval performed with 0.01M Tris/EDTA Buffer (pH 9.0) prior to IHC staining.



Immunofluorescence analysis of paraffin-embedded human spleen using SHIP11 Rabbit mAb (CAB3571) at dilution of 1:100 (40x lens). Secondary antibody: Cy3-conjugated Goat anti-Rabbit IgG (H+L) (CABS007) at 1:500 dilution. Blue: DAPI for nuclear staining.



Immunofluorescence analysis of paraffin-embedded mouse spleen using SHIP11 Rabbit mAb (CAB3571) at dilution of 1:100 (40x lens). Secondary antibody: Cy3-conjugated Goat anti-Rabbit IgG (H+L) (CABS007) at 1:500 dilution. Blue: DAPI for nuclear staining.