

Cation-independent M6PR (IGF2R) Monoclonal Antibody

CAB3762

Description

This Cation-independent M6PR (IGF2R) Monoclonal Antibody is supplied as a kit for advanced applications. The kit includes Bradford Reagent to quantify total protein concentration for accurate sample normalization (Optional).

Product Information

SKU:	CAB3762
Contents:	20 μ L, 100 μ L Bradford Reagent: 1 vial (2ml)
Category:	Monoclonal Antibody
Synonyms:	MPR1, MPRI, CD222, CIMPR, M6P-R, MPR300, CI-M6PR, MPR 300, M6P/IGF2R, Cation-independent M6PR (IGF2R)
Clone:	ARC0263
Applications:	WB IF/ICC ELISA
Conjugation:	Unconjugated
Reactivity:	Human, Mouse, Rat

Antibody Data

Gene ID:	3482
Uniprot:	AB_2863138
Host Species:	Rabbit
Purification:	Affinity purification
Observed MW:	274 kDa
Calculated MW:	274 kDa

Preparation & Storage

Storage: Store at -20°C. Avoid freeze / thaw cycles. Buffer: PBS containing 50% glycerol and 0.05% BSA, preserved with proclin300 or sodium azide (as specified on the Certificate of Analysis), pH 7.3.

Store Bradford Reagent at Room Temperature for 1 Year.

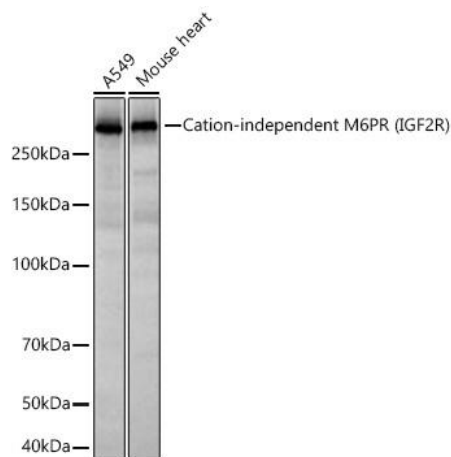
Positive Sample: A549, Mouse heart

Recommended Dilutions:

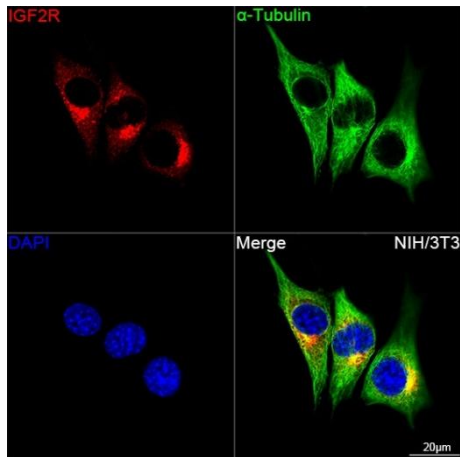
WB	1:1000 - 1:6000
IF/ICC	1:100 - 1:1000
ELISA	Recommended starting concentration is 1 µg/mL. Please optimize the concentration based on your specific assay requirements.

Protein Quantification (Optional): To quantify total protein levels, use the Bradford Reagent included in this kit. Visit <https://www.assaygenie.com/bradford-protein-assay-protocol/> to view the full protocol

Validation Data



Western blot analysis of various lysates using Cation-independent M6PR (IGF2R) Rabbit mAb (CAB3762) at 1:3000 dilution incubated at room temperature for 1.5 hours. Secondary antibody: HRP-conjugated Goat anti-Rabbit IgG (H+L) (CABS014) at 1:10000 dilution. Lysates/proteins: 25 µg per lane. Blocking buffer: 3% nonfat dry milk in TBST. Detection: ECL Basic Kit (AbGn00020). Exposure time: 20 s.



Confocal imaging of NIH/3T3 cells using Cation-independent M6PR (IGF2R) Rabbit mAb (CAB3762,dilution 1:100)(Red). The cells were counterstained with α -Tubulin Mouse mAb (CABC012,dilution 1:400) (Green). DAPI was used for nuclear staining (blue). Objective: 100x.