

## KHDRBS1/Sam68 Monoclonal Antibody

CAB3886

### Description

---

This KHDRBS1/Sam68 Monoclonal Antibody is supplied as a kit for advanced applications. The kit includes Bradford Reagent to quantify total protein concentration for accurate sample normalization (Optional).

### Product Information

---

<b>SKU:</b>	CAB3886
<b>Contents:</b>	20 µL, 100 µL Bradford Reagent: 1 vial (2ml)
<b>Category:</b>	Monoclonal Antibody
<b>Synonyms:</b>	p62, p68, Sam68, KHDRBS1/Sam68
<b>Clone:</b>	ARC0858
<b>Applications:</b>	WB IHC-P IF/ICC ELISA
<b>Conjugation:</b>	Unconjugated
<b>Reactivity:</b>	Human, Mouse, Rat

### Antibody Data

---

<b>Gene ID:</b>	10657
<b>Uniprot:</b>	AB_2863153
<b>Host Species:</b>	Rabbit
<b>Purification:</b>	Affinity purification
<b>Observed MW:</b>	68kDa
<b>Calculated MW:</b>	48kDa

## Preparation & Storage

**Storage:** Store at -20°C. Avoid freeze / thaw cycles. Buffer: PBS containing 50% glycerol and 0.05% BSA, preserved with proclin300 or sodium azide (as specified on the Certificate of Analysis), pH 7.3.

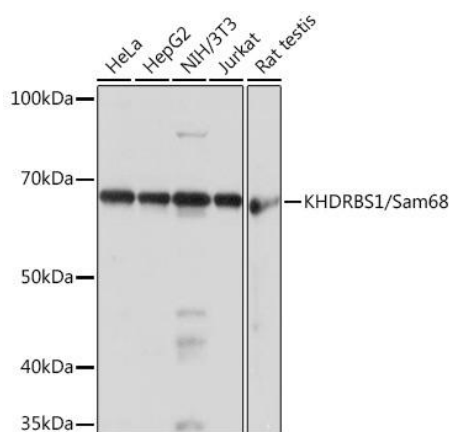
Store Bradford Reagent at Room Temperature for 1 Year.

**Positive Sample:** HeLa, HepG2, NIH/3T3, Jurkat, Rat testis

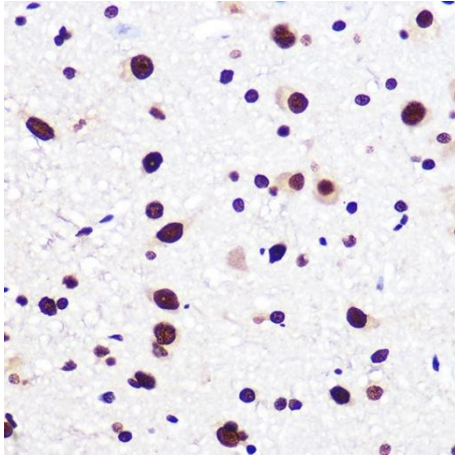
<b>Recommended Dilutions:</b>	<b>WB</b>	1:500 - 1:2000
	<b>IHC-P</b>	1:50 - 1:200
	<b>IF/ICC</b>	1:50 - 1:200
	<b>ELISA</b>	Recommended starting concentration is 1 µg/mL. Please optimize the concentration based on your specific assay requirements.

**Protein Quantification (Optional):** To quantify total protein levels, use the Bradford Reagent included in this kit. Visit <https://www.assaygenie.com/bradford-protein-assay-protocol/> to view the full protocol

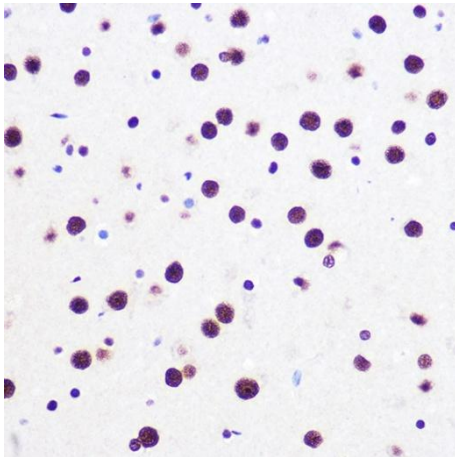
## Validation Data



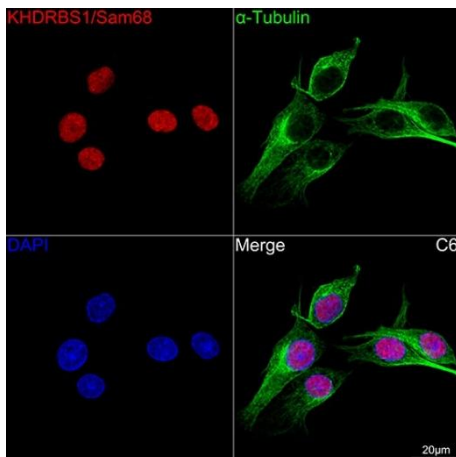
Western blot analysis of various lysates using KHDRBS1/KHDRBS1/Sam68 Rabbit mAb (CAB3886) at 1:1000 dilution. Secondary antibody: HRP-conjugated Goat anti-Rabbit IgG (H+L) (CABS014) at 1:10000 dilution. Lysates/proteins: 25µg per lane. Blocking buffer: 3% nonfat dry milk in TBST. Detection: ECL Basic Kit (AbGn00020). Exposure time: 1s.



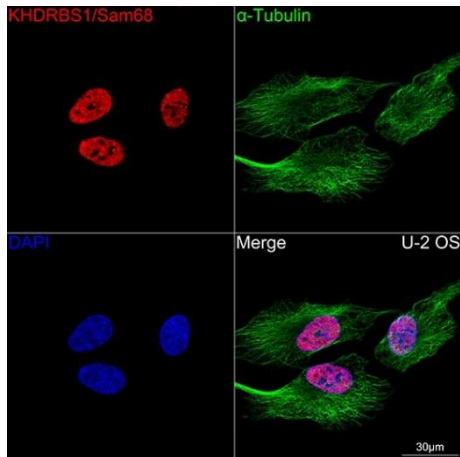
Immunohistochemistry analysis of paraffin-embedded Rat brain using KHDRBS1/KHDRBS1/Sam68 Rabbit mAb (CAB3886) at dilution of 1:100 (40x lens). Microwave antigen retrieval performed with 0.01M PBS Buffer (pH 7.2) prior to IHC staining.



Immunohistochemistry analysis of paraffin-embedded Mouse brain using KHDRBS1/KHDRBS1/Sam68 Rabbit mAb (CAB3886) at dilution of 1:100 (40x lens). Microwave antigen retrieval performed with 0.01M PBS Buffer (pH 7.2) prior to IHC staining.



Confocal imaging of cells using KHDRBS1/Sam68 Rabbit mAb (CAB3886, at dilution of 1:100) (Red). The cells were counterstained with α-Tubulin Mouse mAb (CABC012, dilution 1:400) (Green). DAPI was used for nuclear staining (blue). Objective: 100x.



Confocal imaging of U-2 OS cells using KHDRBS1/Sam68 Rabbit mAb (CAB3886, at dilution of 1:100) (Red). The cells were counterstained with α-Tubulin Mouse mAb (CABC012, dilution 1:400) (Green). DAPI was used for nuclear staining (blue). Objective: 100x.