

PGE receptor EP2 (PTGER3) Antibody

CAB4057

Description

This PGE receptor EP2 (PTGER3) Antibody is supplied as a kit for advanced applications. The kit includes Bradford Reagent to quantify total protein concentration for accurate sample normalization (Optional).

Product Information

SKU:	CAB4057
Contents:	20 μ L, 100 μ L Bradford Reagent: 1 vial (2ml)
Category:	Polyclonal Antibody
Synonyms:	EP3, EP3e, EP3-I, EP3-II, EP3-IV, EP3-VI, PGE2-R, EP3-III, Inc003875, PGE receptor EP3 (PTGER3)
Clone:	-
Applications:	WB ELISA
Conjugation:	Unconjugated
Reactivity:	Mouse, Rat

Antibody Data

Gene ID:	5733
Uniprot:	AB_2765475
Host Species:	Rabbit
Purification:	Affinity purification
Observed MW:	50kDa
Calculated MW:	43kDa

Preparation & Storage

Storage: Store at -20°C. Avoid freeze / thaw cycles. Buffer: PBS with 0.01% thimerosal, 50% glycerol, pH 7.3.

Store Bradford Reagent at Room Temperature for 1 Year.

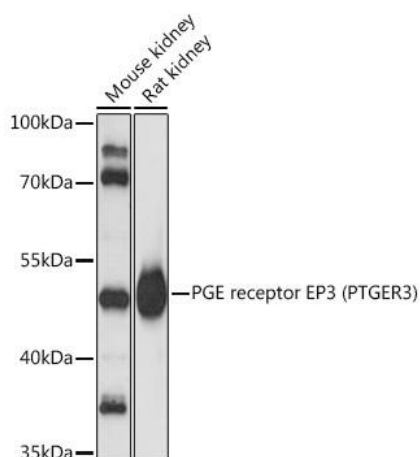
Positive Sample: Mouse kidney, Rat kidney

Recommended Dilutions:

WB	1:500 - 1:2000
ELISA	Recommended starting concentration is 1 µg/mL. Please optimize the concentration based on your specific assay requirements.

Protein Quantification (Optional): To quantify total protein levels, use the Bradford Reagent included in this kit. Visit <https://www.assaygenie.com/bradford-protein-assay-protocol/> to view the full protocol

Validation Data



Western blot analysis of various lysates using PGE receptor (PTGER3) Rabbit pAb (CAB4057) at 1:3000 dilution. Secondary antibody: HRP-conjugated Goat anti-Rabbit IgG (H+L) (CABS014) at 1:10000 dilution. Lysates/proteins: 25µg per lane. Blocking buffer: 3% nonfat dry milk in TBST. Detection: ECL Basic Kit (AbGn00020). Exposure time: 1s.