

alpha Sarcoglycan (SGCA) Antibody

CAB4109

Description

This alpha Sarcoglycan (SGCA) Antibody is supplied as a kit for advanced applications. The kit includes Bradford Reagent to quantify total protein concentration for accurate sample normalization (Optional).

Product Information

SKU:	CAB4109
Contents:	20 μ L, 100 μ L Bradford Reagent: 1 vial (2ml)
Category:	Polyclonal Antibody
Synonyms:	ADL, DAG2, 50DAG, DMDA2, LGMD2D, LGMDR3, SCARMD1, adhalin, alpha Sarcoglycan (SGCA)
Clone:	-
Applications:	WB IF/ICC ELISA
Conjugation:	Unconjugated
Reactivity:	Human, Mouse, Rat

Antibody Data

Gene ID:	6442
Uniprot:	AB_2765504
Host Species:	Rabbit
Purification:	Affinity purification
Observed MW:	43kDa
Calculated MW:	43kDa

Preparation & Storage

Storage: Store at -20°C. Avoid freeze / thaw cycles. Buffer: PBS with 0.01% thimerosal, 50% glycerol, pH 7.3.
Store Bradford Reagent at Room Temperature for 1 Year.

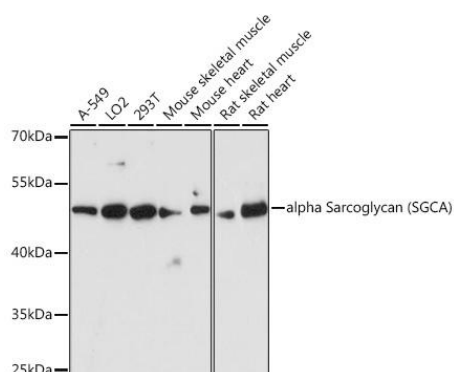
Positive Sample: A-549, LO2, 293T, Mouse skeletal muscle, Mouse heart, Rat skeletal muscle, Rat heart

Recommended Dilutions:

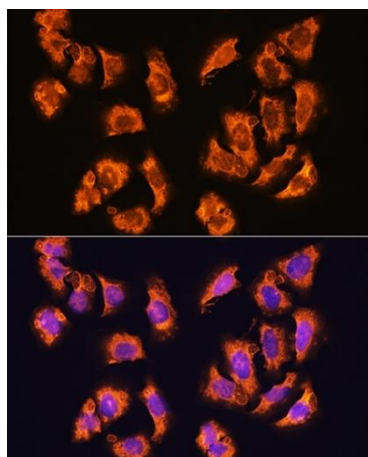
WB	1:500 - 1:2000
IF/ICC	1:50 - 1:200
ELISA	Recommended starting concentration is 1 µg/mL. Please optimize the concentration based on your specific assay requirements.

Protein Quantification (Optional): To quantify total protein levels, use the Bradford Reagent included in this kit. Visit <https://www.assaygenie.com/bradford-protein-assay-protocol/> to view the full protocol

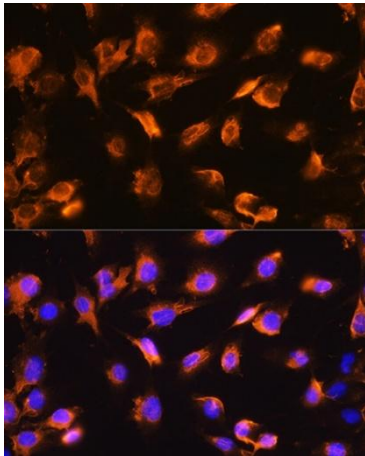
Validation Data



Western blot analysis of various lysates using alpha Sarcoglycan (SGCA) Rabbit pAb (CAB4109) at 1:3000 dilution. Secondary antibody: HRP-conjugated Goat anti-Rabbit IgG (H+L) (CABS014) at 1:10000 dilution. Lysates/proteins: 25µg per lane. Blocking buffer: 3% nonfat dry milk in TBST. Detection: ECL Basic Kit (AbGn00020). Exposure time: 90s.



Immunofluorescence analysis of U2OS cells using alpha Sarcoglycan (alpha Sarcoglycan (SGCA)) Rabbit pAb (CAB4109) at dilution of 1:100. Secondary antibody: Cy3-conjugated Goat anti-Rabbit IgG (H+L) (CABS007) at 1:500 dilution. Blue: DAPI for nuclear staining.



Immunofluorescence analysis of cells using alpha Sarcoglycan (alpha Sarcoglycan (SGCA)) Rabbit pAb (CAB4109) at dilution of 1:100. Secondary antibody: Cy3-conjugated Goat anti-Rabbit IgG (H+L) (CABS007) at 1:500 dilution. Blue: DAPI for nuclear staining.