

## GLUT3/SLC2A3 Monoclonal Antibody

CAB4137

### Description

---

This GLUT3/SLC2A3 Monoclonal Antibody is supplied as a kit for advanced applications. The kit includes Bradford Reagent to quantify total protein concentration for accurate sample normalization (Optional).

### Product Information

---

|                      |   |
|----------------------|---|
| <b>SKU:</b>          | CAB4137   |
| <b>Contents:</b>     | 20 $\mu$ L, 100 $\mu$ L<br>Bradford Reagent: 1 vial (2ml) |
| <b>Category:</b>     | Monoclonal Antibody                                       |
| <b>Synonyms:</b>     | GLUT3, GLUT3/SLC2A3                                       |
| <b>Clone:</b>        | ARC0917   |
| <b>Applications:</b> | <span>WB</span> <span>IP</span> <span>ELISA</span>        |
| <b>Conjugation:</b>  | Unconjugated  |
| <b>Reactivity:</b>   | Human, Mouse, Rat   |

### Antibody Data

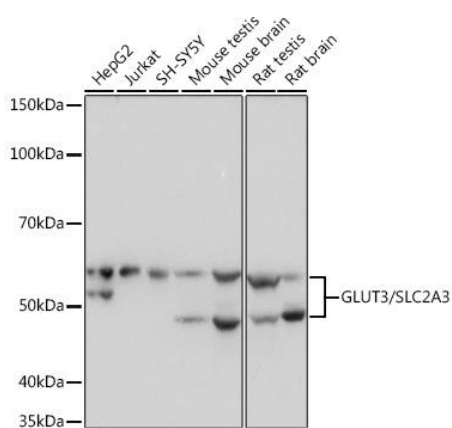
---

|                       |                       |
|-----------------------|-----------------------|
| <b>Gene ID:</b>       | 6515                  |
| <b>Uniprot:</b>       | AB_2863194            |
| <b>Host Species:</b>  | Rabbit                |
| <b>Purification:</b>  | Affinity purification |
| <b>Observed MW:</b>   | 48-60kDa              |
| <b>Calculated MW:</b> | 54kDa                 |

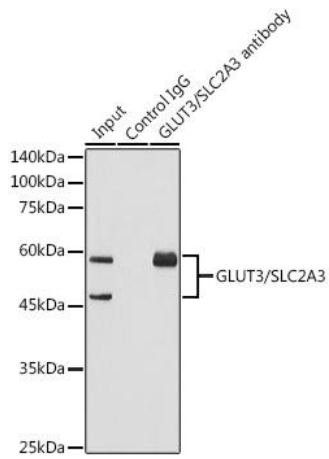
## Preparation & Storage

|   |  |           |                 |           |  |              |   |
|---|--|-----------|-----------------|-----------|--|--------------|---|
| <b>Storage:</b>                           | Store at -20°C. Avoid freeze / thaw cycles. Buffer: PBS containing 50% glycerol and 0.05% BSA, preserved with proclin300 or sodium azide (as specified on the Certificate of Analysis), pH 7.3.<br>Store Bradford Reagent at Room Temperature for 1 Year.  |           |                 |           |  |              |   |
| <b>Positive Sample:</b>                   | HepG2, Jurkat, SH-SY5Y, Mouse testis, Mouse brain, Rat testis, Rat brain   |           |                 |           |  |              |   |
| <b>Recommended Dilutions:</b>             | <table border="1"> <tr> <td><b>WB</b></td><td>1:1000 - 1:4000</td></tr> <tr> <td><b>IP</b></td><td>0.5µg-4µg antibody for 400µg-600µg extracts of whole cells</td></tr> <tr> <td><b>ELISA</b></td><td>Recommended starting concentration is 1 µg/mL. Please optimize the concentration based on your specific assay requirements.</td></tr> </table> | <b>WB</b> | 1:1000 - 1:4000 | <b>IP</b> | 0.5µg-4µg antibody for 400µg-600µg extracts of whole cells | <b>ELISA</b> | Recommended starting concentration is 1 µg/mL. Please optimize the concentration based on your specific assay requirements. |
| <b>WB</b>                                 | 1:1000 - 1:4000  |           |                 |           |  |              |   |
| <b>IP</b>                                 | 0.5µg-4µg antibody for 400µg-600µg extracts of whole cells   |           |                 |           |  |              |   |
| <b>ELISA</b>                              | Recommended starting concentration is 1 µg/mL. Please optimize the concentration based on your specific assay requirements.  |           |                 |           |  |              |   |
| <b>Protein Quantification (Optional):</b> | To quantify total protein levels, use the Bradford Reagent included in this kit. Visit <a href="https://www.assaygenie.com/bradford-protein-assay-protocol/">https://www.assaygenie.com/bradford-protein-assay-protocol/</a> to view the full protocol   |           |                 |           |  |              |   |

## Validation Data



Western blot analysis of various lysates using GLUT3/SLC2A3 Rabbit mAb (CAB4137) at 1:1000 dilution. Secondary antibody: HRP-conjugated Goat anti-Rabbit IgG (H+L) (CABS014) at 1:10000 dilution. Lysates/proteins: 25µg per lane. Blocking buffer: 3% nonfat dry milk in TBST. Detection: ECL Basic Kit (AbGn00020). Exposure time: 1s.



Immunoprecipitation analysis of 600 µg extracts of Mouse brain using 3 µg GLUT3/SLC2A3 antibody (CAB4137). Western blot was performed from the immunoprecipitate using GLUT3/SLC2A3 antibody (CAB4137) at a dilution of 1:1000.