

UQCRC2 Antibody

CAB4181

Description

This UQCRC2 Antibody is supplied as a kit for advanced applications. The kit includes Bradford Reagent to quantify total protein concentration for accurate sample normalization (Optional).

Product Information

| | |
|----------------------|---|
| SKU: | CAB4181 |
| Contents: | 20 µL, 100 µL Bradford Reagent: 1 vial (2ml) |
| Category: | Polyclonal Antibody |
| Synonyms: | QCR2, UQCR2, MC3DN5, UQCRC2 |
| Clone: | - |
| Applications: | WB IHC-P IF/ICC IP ELISA |
| Conjugation: | Unconjugated |
| Reactivity: | Human, Mouse, Rat |

Antibody Data

| | |
|-----------------------|-----------------------|
| Gene ID: | 7385 |
| Uniprot: | AB_2765543 |
| Host Species: | Rabbit |
| Purification: | Affinity purification |
| Observed MW: | 48kDa |
| Calculated MW: | 48kDa |

Preparation & Storage

Storage: Store at -20°C. Avoid freeze / thaw cycles. Buffer: PBS containing 50% glycerol, preserved with proclin300 or sodium azide (as specified on the Certificate of Analysis), pH 7.3.

Store Bradford Reagent at Room Temperature for 1 Year.

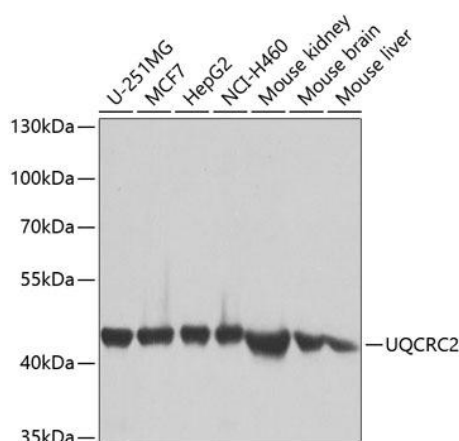
Positive Sample: U-251MG, MCF7, HepG2, H460, Mouse kidney, Mouse brain, Mouse liver, Rat spinal cord, Rat testis, NCI-H460

Recommended Dilutions:

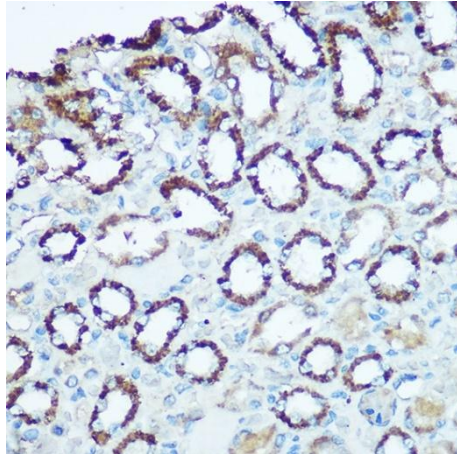
| | |
|---------------|---|
| WB | 1:500 - 1:2000 |
| IHC-P | 1:50 - 1:200 |
| IF/ICC | 1:50 - 1:200 |
| IP | 0.5µg-4µg antibody for 200µg-400µg extracts of whole cells |
| ELISA | Recommended starting concentration is 1 µg/mL. Please optimize the concentration based on your specific assay requirements. |

Protein Quantification (Optional): To quantify total protein levels, use the Bradford Reagent included in this kit. Visit <https://www.assaygenie.com/bradford-protein-assay-protocol/> to view the full protocol

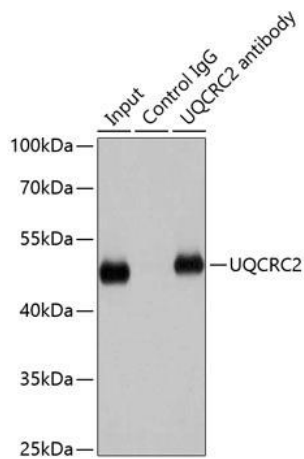
Validation Data



Western blot analysis of various lysates using UQCRC2 Rabbit pAb (CAB4181) at 1:1000 dilution. Secondary antibody: HRP-conjugated Goat anti-Rabbit IgG (H+L) (CABS014) at 1:10000 dilution. Lysates/proteins: 25µg per lane. Blocking buffer: 3% nonfat dry milk in TBST. Detection: ECL Basic Kit (AbGn00020). Exposure time: 1s.



Immunohistochemistry analysis of paraffin-embedded Rat kidney using UQCRC2 Rabbit pAb (CAB4181) at dilution of 1:100 (40x lens). Microwave antigen retrieval performed with 0.01M Tris/EDTA Buffer (pH 9.0) prior to IHC staining.



Immunoprecipitation analysis of 200 µg extracts of HepG2 cells using 1 µg UQCRC2 antibody (CAB4181). Western blot was performed from the immunoprecipitate using UQCRC2 antibody (CAB4181) at a dilution of 1:1000.