

KIFAP3 Antibody

CAB4518

Description

This KIFAP3 Antibody is supplied as a kit for advanced applications. The kit includes Bradford Reagent to quantify total protein concentration for accurate sample normalization (Optional).

Product Information

SKU:	CAB4518
Contents:	20 μ L, 100 μ L Bradford Reagent: 1 vial (2ml)
Category:	Polyclonal Antibody
Synonyms:	FLA3, KAP3, SMAP, KAP-1, KAP-3, Smg-GDS, dJ190I16.1, KIFAP3
Clone:	-
Applications:	WB IF/ICC IP ELISA
Conjugation:	Unconjugated
Reactivity:	Human, Mouse, Rat

Antibody Data

Gene ID:	22920
Uniprot:	AB_2765732
Host Species:	Rabbit
Purification:	Affinity purification
Observed MW:	110kDa
Calculated MW:	91kDa

Preparation & Storage

Storage: Store at -20°C. Avoid freeze / thaw cycles. Buffer: PBS containing 50% glycerol, preserved with proclin300 or sodium azide (as specified on the Certificate of Analysis), pH 7.3.

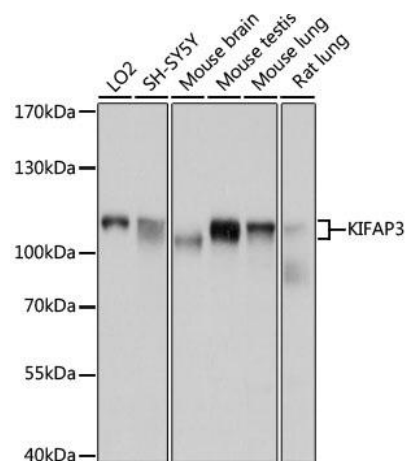
Store Bradford Reagent at Room Temperature for 1 Year.

Positive Sample: LO2, SH-SY5Y, Mouse brain, Mouse testis, Mouse lung, Rat lung

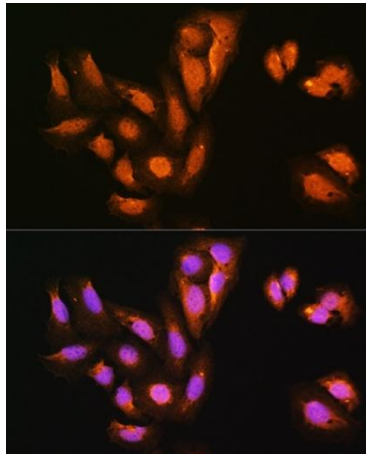
Recommended Dilutions:	WB	1:500 - 1:2000
	IF/ICC	1:50 - 1:200
	IP	0.5µg-4µg antibody for 200µg-400µg extracts of whole cells
	ELISA	Recommended starting concentration is 1 µg/mL. Please optimize the concentration based on your specific assay requirements.

Protein Quantification (Optional): To quantify total protein levels, use the Bradford Reagent included in this kit. Visit <https://www.assaygenie.com/bradford-protein-assay-protocol/> to view the full protocol

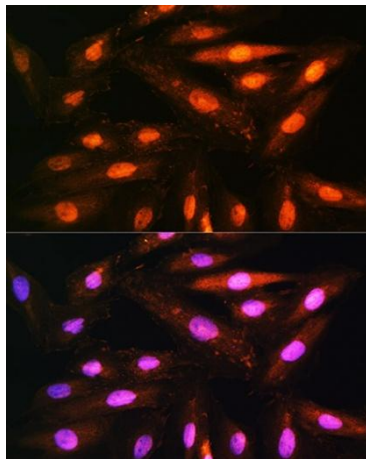
Validation Data



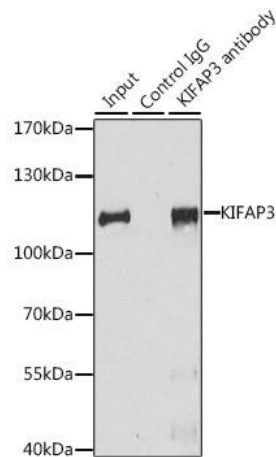
Western blot analysis of various lysates using KIFAP3 Rabbit pAb (CAB4518) at 1:1000 dilution. Secondary antibody: HRP-conjugated Goat anti-Rabbit IgG (H+L) (CABS014) at 1:10000 dilution. Lysates/proteins: 25µg per lane. Blocking buffer: 3% nonfat dry milk in TBST. Detection: ECL Basic Kit (AbGn00020). Exposure time: 5s.



Immunofluorescence analysis of U2OS cells using KIFAP3 Rabbit pAb (CAB4518) at dilution of 1:100. Secondary antibody: Cy3-conjugated Goat anti-Rabbit IgG (H+L) (CABS007) at 1:500 dilution. Blue: DAPI for nuclear staining.



Immunofluorescence analysis of H9C2 cells using KIFAP3 Rabbit pAb (CAB4518) at dilution of 1:100. Secondary antibody: Cy3-conjugated Goat anti-Rabbit IgG (H+L) (CABS007) at 1:500 dilution. Blue: DAPI for nuclear staining.



Immunoprecipitation analysis of 200 µg extracts of HeLa cells, using 3 µg KIFAP3 antibody (CAB4518). Western blot was performed from the immunoprecipitate using KIFAP3 antibody (CAB4518) at a dilution of 1:1000.