

CD20 Monoclonal Antibody

CAB4893

Description

This CD20 Monoclonal Antibody is supplied as a kit for advanced applications. The kit includes Bradford Reagent to quantify total protein concentration for accurate sample normalization (Optional).

Product Information

SKU:	CAB4893
Contents:	20 µL, 100 µL Bradford Reagent: 1 vial (2ml)
Category:	Monoclonal Antibody
Synonyms:	B1, S7, Bp35, CD20, FMC7, CVID5, LEU-16
Clone:	ARC51683
Applications:	WB IHC-P IF/ICC FC ELISA
Conjugation:	Unconjugated
Reactivity:	Human

Antibody Data

Gene ID:	931
Uniprot:	AB_2863378
Host Species:	Rabbit
Purification:	Affinity purification
Observed MW:	30-50kDa
Calculated MW:	33kDa

Preparation & Storage

Storage: Store at -20°C. Avoid freeze / thaw cycles. Buffer: PBS with 0.09% Sodium azide, 0.05% BSA, 50% glycerol, pH 7.3.

Store Bradford Reagent at Room Temperature for 1 Year.

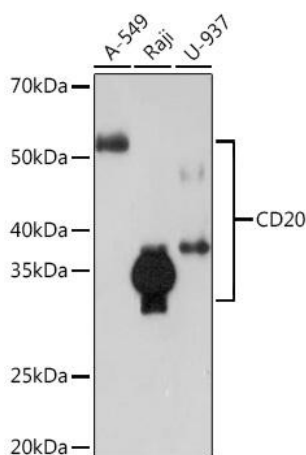
Positive Sample: A-549, Raji, U-937

Recommended Dilutions:

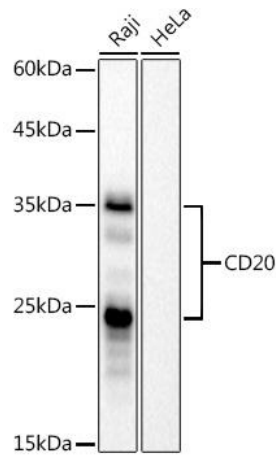
WB	1:1000 - 1:2000
IHC-P	1:1000 - 1:10000
IF/ICC	1:800 - 1:3200
FC	1:50 - 1:200
ELISA	Recommended starting concentration is 1 µg/mL. Please optimize the concentration based on your specific assay requirements.

Protein Quantification (Optional): To quantify total protein levels, use the Bradford Reagent included in this kit. Visit <https://www.assaygenie.com/bradford-protein-assay-protocol/> to view the full protocol

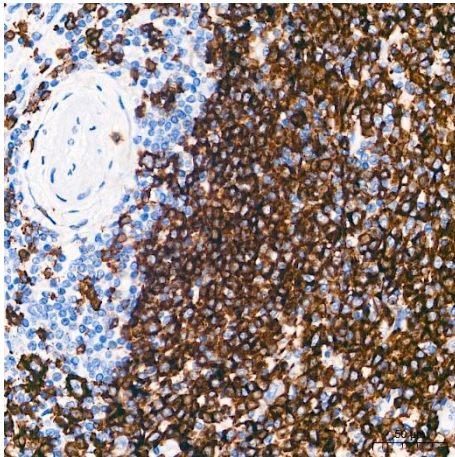
Validation Data



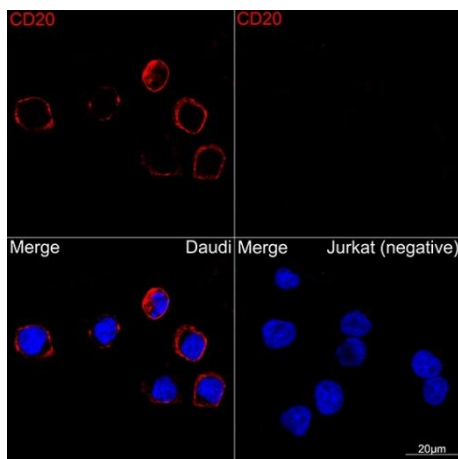
Western blot analysis of various lysates using Rabbit mAb (CAB4893) at 1:1000 dilution. Secondary antibody: HRP-conjugated Goat anti-Rabbit IgG (H+L) (CABS014) at 1:10000 dilution. Lysates/proteins: 25µg per lane. Blocking buffer: 3% nonfat dry milk in TBST. Detection: ECL Enhanced Kit (AbGn00021). Exposure time: 3min.



Western blot analysis of various lysates, using Rabbit mAb (CAB4893) at 1:1000 dilution. Secondary antibody: HRP-conjugated Goat anti-Rabbit IgG (H+L) (CABS014) at 1:10000 dilution. Lysates/proteins: 25µg per lane. Blocking buffer: 3% nonfat dry milk in TBST. Detection: ECL Basic Kit (AbGn00020). Negative control (NC): HeLa Exposure time: 60s.



Immunohistochemistry analysis of paraffin-embedded Human spleen tissue using Rabbit mAb (CAB4893) at a dilution of 1:1000 (40x lens). High pressure antigen retrieval performed with 0.01M Tris-EDTA Buffer(pH 9.0) prior to IHC staining.



Confocal imaging of Daudi and Jurkat(Negative control) cells using Rabbit mAb (CAB4893,dilution 1:1000)(Red). DAPI was used for nuclear staining (blue). Objective: 100x.