

alpha + beta Synuclein Monoclonal Antibody

CAB4899

Description

This alpha + beta Synuclein Monoclonal Antibody is supplied as a kit for advanced applications. The kit includes Bradford Reagent to quantify total protein concentration for accurate sample normalization (Optional).

Product Information

SKU:	CAB4899
Contents:	20 µL, 100 µL Bradford Reagent: 1 vial (2ml)
Category:	Monoclonal Antibody
Synonyms:	NACP, PARK1, PARK4, PD1, alpha + beta Synuclein
Clone:	ARC1181
Applications:	WB ELISA IF-P
Conjugation:	Unconjugated
Reactivity:	Human, Mouse, Rat

Antibody Data

Gene ID:	6622 6620
Uniprot:	AB_2863382
Host Species:	Rabbit
Purification:	Affinity purification
Observed MW:	18kDa
Calculated MW:	18kDa

Preparation & Storage

Storage: Store at -20°C. Avoid freeze / thaw cycles. Buffer: PBS containing 50% glycerol and 0.05% BSA, preserved with proclin300 or sodium azide (as specified on the Certificate of Analysis), pH 7.3.

Store Bradford Reagent at Room Temperature for 1 Year.

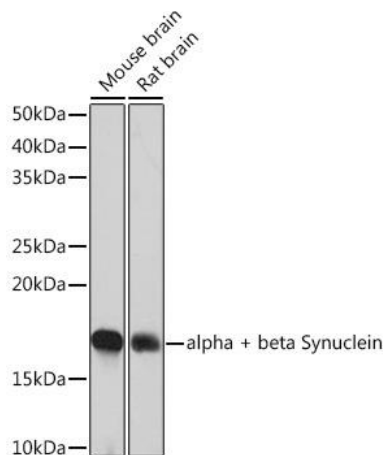
Positive Sample: U-87MG, Mouse brain, Rat brain

Recommended Dilutions:

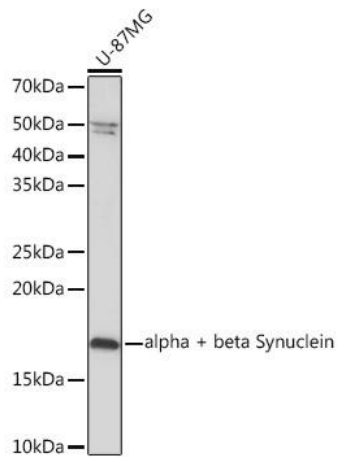
WB	1:500 - 1:2000
IF-P	1:50 - 1:200
ELISA	Recommended starting concentration is 1 µg/mL. Please optimize the concentration based on your specific assay requirements.

Protein Quantification (Optional): To quantify total protein levels, use the Bradford Reagent included in this kit. Visit <https://www.assaygenie.com/bradford-protein-assay-protocol/> to view the full protocol

Validation Data



Western blot analysis of various lysates using alpha + beta Synuclein Rabbit mAb (CAB4899) at 1:1000 dilution. Secondary antibody: HRP-conjugated Goat anti-Rabbit IgG (H+L) (CABS014) at 1:10000 dilution. Lysates/proteins: 25µg per lane. Blocking buffer: 3% nonfat dry milk in TBST. Detection: ECL Basic Kit (AbGn00020). Exposure time: 1min.



Western blot analysis of lysates from U-87MG cells, using alpha + beta Synuclein Rabbit mAb (CAB4899) at 1:1000 dilution. Secondary antibody: HRP-conjugated Goat anti-Rabbit IgG (H+L) (CABS014) at 1:10000 dilution. Lysates/proteins: 25µg per lane. Blocking buffer: 3% nonfat dry milk in TBST. Detection: ECL Enhanced Kit (AbGn00021). Exposure time: 3min.