

## Myosin heavy chain Monoclonal Antibody

CAB4963

### Description

---

This Myosin heavy chain Monoclonal Antibody is supplied as a kit for advanced applications. The kit includes Bradford Reagent to quantify total protein concentration for accurate sample normalization (Optional).

### Product Information

---

<b>SKU:</b>	CAB4963
<b>Contents:</b>	20 µL, 100 µL Bradford Reagent: 1 vial (2ml)
<b>Category:</b>	Monoclonal Antibody
<b>Synonyms:</b>	CMD1S, CMH1, MPD1, MYHCB, SPMD, SPMM, Myosin heavy chain
<b>Clone:</b>	ARC1170
<b>Applications:</b>	<span>WB</span> <span>IHC-P</span> <span>ELISA</span> <span>IF-P</span>
<b>Conjugation:</b>	Unconjugated
<b>Reactivity:</b>	Mouse, Rat

### Antibody Data

---

<b>Gene ID:</b>	4625 4624
<b>Uniprot:</b>	AB_2863399
<b>Host Species:</b>	Rabbit
<b>Purification:</b>	Affinity purification
<b>Observed MW:</b>	224kDa
<b>Calculated MW:</b>	224kDa

## Preparation & Storage

**Storage:** Store at -20°C. Avoid freeze / thaw cycles. Buffer: PBS containing 50% glycerol and 0.05% BSA, preserved with proclin300 or sodium azide (as specified on the Certificate of Analysis), pH 7.3.

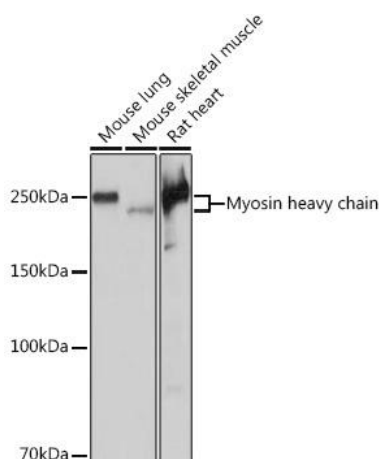
Store Bradford Reagent at Room Temperature for 1 Year.

**Positive Sample:** Mouse lung, Mouse skeletal muscle, Rat heart

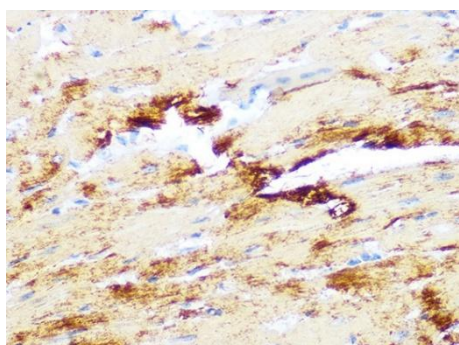
<b>Recommended Dilutions:</b>	<b>WB</b>	1:1000 - 1:6000
	<b>IF-P</b>	1:100 - 1:400
	<b>IHC-P</b>	1:100 - 1:500
	<b>ELISA</b>	Recommended starting concentration is 1 µg/mL. Please optimize the concentration based on your specific assay requirements.

**Protein Quantification (Optional):** To quantify total protein levels, use the Bradford Reagent included in this kit. Visit <https://www.assaygenie.com/bradford-protein-assay-protocol/> to view the full protocol

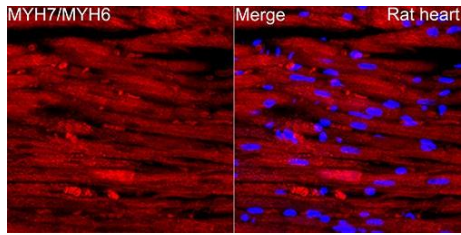
## Validation Data



Western blot analysis of various lysates using Myosin heavy chain Rabbit mAb (CAB4963) at 1:1000 dilution. Secondary antibody: HRP-conjugated Goat anti-Rabbit IgG (H+L) (CABS014) at 1:10000 dilution. Lysates/proteins: 25µg per lane. Blocking buffer: 3% nonfat dry milk in TBST. Detection: ECL Basic Kit (AbGn00020). Exposure time: 1s.



Immunohistochemistry analysis of paraffin-embedded Mouse heart using Myosin heavy chain Rabbit mAb (CAB4963) at dilution of 1:100 (40x lens). Microwave antigen retrieval performed with 0.01M PBS Buffer (pH 7.2) prior to IHC staining.



Immunofluorescence analysis of paraffin-embedded rat heart using Myosin heavy chain Rabbit mAb (CAB4963) at dilution of 1:100 (40x lens). Secondary antibody: Cy3-conjugated Goat anti-Rabbit IgG (H+L) (CABS007) at 1:500 dilution. Blue: DAPI for nuclear staining.