

TEAD1 Monoclonal Antibody

CAB5092

Description

This TEAD1 Monoclonal Antibody is supplied as a kit for advanced applications. The kit includes Bradford Reagent to quantify total protein concentration for accurate sample normalization (Optional).

Product Information

SKU:	CAB5092
Contents:	20 μ L, 100 μ L Bradford Reagent: 1 vial (2ml)
Category:	Monoclonal Antibody
Synonyms:	AA, REF1, TCF13, TEF-1, NTEF-1, TCF-13, TEAD-1
Clone:	ARC1158
Applications:	WB ELISA
Conjugation:	Unconjugated
Reactivity:	Human

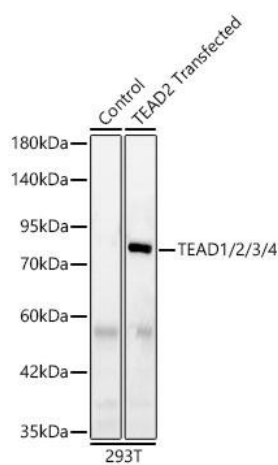
Antibody Data

Gene ID:	7003 7004 8463 7005
Uniprot:	AB_2863440
Host Species:	Rabbit
Purification:	Affinity purification
Observed MW:	53 kDa/90 kDa (Full-length protein)
Calculated MW:	48 kDa/49 kDa/47 kDa

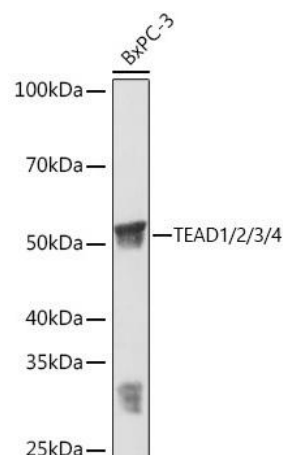
Preparation & Storage

Storage:	Store at -20°C. Avoid freeze / thaw cycles. Buffer: PBS containing 50% glycerol and 0.05% BSA, preserved with proclin300 or sodium azide (as specified on the Certificate of Analysis), pH 7.3. Store Bradford Reagent at Room Temperature for 1 Year.				
Positive Sample:	BXPC-3, 293T transfected with TEAD2 (Human), 293F transfected with TEAD3 (Human), 293T transfected with TEAD4 (Human), 293T transfected with TEAD1 (Human)				
Recommended Dilutions:	<table border="1"> <tr> <td>WB</td><td>1:1000 - 1:5000</td></tr> <tr> <td>ELISA</td><td>Recommended starting concentration is 1 µg/mL. Please optimize the concentration based on your specific assay requirements.</td></tr> </table>	WB	1:1000 - 1:5000	ELISA	Recommended starting concentration is 1 µg/mL. Please optimize the concentration based on your specific assay requirements.
WB	1:1000 - 1:5000				
ELISA	Recommended starting concentration is 1 µg/mL. Please optimize the concentration based on your specific assay requirements.				
Protein Quantification (Optional):	To quantify total protein levels, use the Bradford Reagent included in this kit. Visit https://www.assaygenie.com/bradford-protein-assay-protocol/ to view the full protocol				

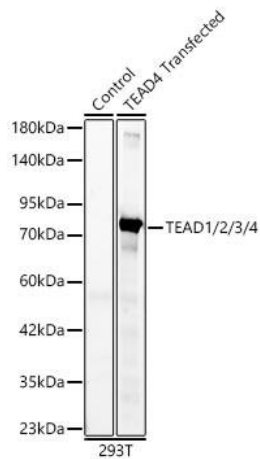
Validation Data



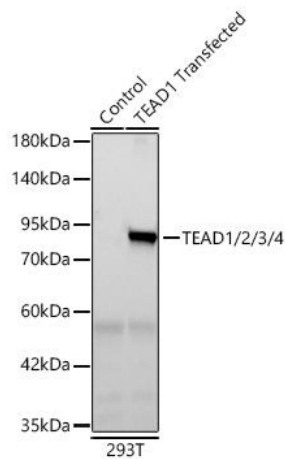
Western blot analysis of lysates from wild type (WT) and 293T cells transfected with TEAD2 using TEAD1/2/3/4 Rabbit mAb(CAB5092) at 1:1000 dilution incubated overnight at 4°C. Secondary antibody: HRP-conjugated Goat anti-Rabbit IgG (H+L) (CABS014) at 1:10000 dilution. Lysates/proteins: 25 µg per lane. Blocking buffer: 3% nonfat dry milk in TBST. Detection: ECL Basic Kit (AbGn00020). Exposure time: 20 s.



Western blot analysis of various lysates using TEAD1/2/3/4 Rabbit mAb (CAB5092) at 1:3000 dilution incubated overnight at 4°C. Secondary antibody: HRP-conjugated Goat anti-Rabbit IgG (H+L) (CABS014) at 1:10000 dilution. Lysates/proteins: 25µg per lane. Blocking buffer: 3% nonfat dry milk in TBST. Detection: ECL Basic Kit (AbGn00020). Exposure time: 1 min.



Western blot analysis of lysates from wild type (WT) and 293T cells transfected with TEAD4 using TEAD1/2/3/4 Rabbit mAb(CAB5092) at 1:1000 dilution incubated overnight at 4°C. Secondary antibody: HRP-conjugated Goat anti-Rabbit IgG (H+L) (CABS014) at 1:10000 dilution. Lysates/proteins: 25 µg per lane. Blocking buffer: 3% nonfat dry milk in TBST. Detection: ECL Basic Kit (AbGn00020). Exposure time: 10 s.



Western blot analysis of lysates from wild type (WT) and 293T cells transfected with TEAD1 using TEAD1/2/3/4 Rabbit mAb (CAB5092) at 1:1000 dilution incubated overnight at 4°C. Secondary antibody: HRP-conjugated Goat anti-Rabbit IgG (H+L) (CABS014) at 1:10000 dilution. Lysates/proteins: 25 µg per lane. Blocking buffer: 3% nonfat dry milk in TBST. Detection: ECL Basic Kit (AbGn00020).Exposure time: 10 s.