

TEAD1 Monoclonal Antibody

CAB5218

Description

This TEAD1 Monoclonal Antibody is supplied as a kit for advanced applications. The kit includes Bradford Reagent to quantify total protein concentration for accurate sample normalization (Optional).

Product Information

SKU:	CAB5218
Contents:	20 μ L, 100 μ L Bradford Reagent: 1 vial (2ml)
Category:	Monoclonal Antibody
Synonyms:	AA, REF1, TCF13, TEF-1, NTEF-1, TCF-13, TEAD-1, TEAD1
Clone:	ARC1157
Applications:	WB IP ChIP ELISA CUT&Tag
Conjugation:	Unconjugated
Reactivity:	Human, Mouse, Rat

Antibody Data

Gene ID:	7003
Uniprot:	AB_2863490
Host Species:	Rabbit
Purification:	Affinity purification
Observed MW:	50kDa
Calculated MW:	48kDa

Preparation & Storage

Storage: Store at -20°C. Avoid freeze / thaw cycles. Buffer: PBS containing 50% glycerol and 0.05% BSA, preserved with proclin300 or sodium azide (as specified on the Certificate of Analysis), pH 7.3.

Store Bradford Reagent at Room Temperature for 1 Year.

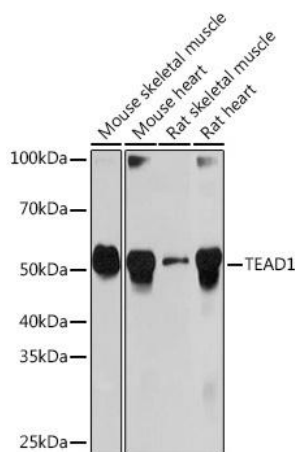
Positive Sample: HeLa, Mouse skeletal muscle, Mouse heart, Rat skeletal muscle, Rat heart

Recommended Dilutions:

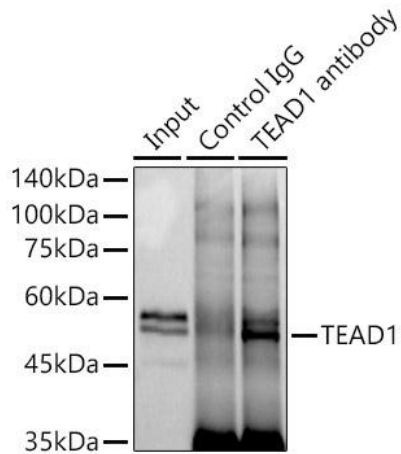
WB	1:500 - 1:2000
IP	0.5µg-4µg antibody for 400µg-600µg extracts of whole cells
ELISA	Recommended starting concentration is 1 µg/mL. Please optimize the concentration based on your specific assay requirements. ChIP 5µg antibody for 10µg-15µg of Chromatin CUT&Tag 10 ⁵ cells / 1 µg

Protein Quantification (Optional): To quantify total protein levels, use the Bradford Reagent included in this kit. Visit <https://www.assaygenie.com/bradford-protein-assay-protocol/> to view the full protocol

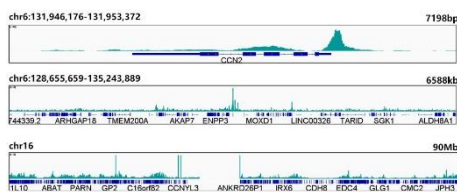
Validation Data



Western blot analysis of various lysates using TEAD1 Rabbit mAb (CAB5218) at 1:1000 dilution. Secondary antibody: HRP-conjugated Goat anti-Rabbit IgG (H+L) (CABS014) at 1:10000 dilution. Lysates/proteins: 25µg per lane. Blocking buffer: 3% nonfat dry milk in TBST. Detection: ECL Basic Kit (AbGn00020). Exposure time: 10s.



Immunoprecipitation analysis of 600 µg extracts of Mouse skeletal muscle cells using 3 µg TEAD1 antibody (CAB5218). Western blot was performed from the immunoprecipitate using TEAD1 antibody (CAB5218) at a dilution of 1:1000.



CUT&Tag was performed using the CUT&Tag Assay Kit (pAG-Tn5) for Illumina from 10^5 Hep cells with 1 µg TEAD1 Rabbit mAb (CAB5218), along with a Goat Anti-Rabbit IgG(H+L). The CUT&Tag results indicate the enrichment pattern of TEAD1 in representative gene loci (SLC7A5), as shown in figure.