

SYN1 Polyclonal Antibody

CAB5247

Description

This SYN1 Polyclonal Antibody is supplied as a kit for advanced applications. The kit includes Bradford Reagent to quantify total protein concentration for accurate sample normalization (Optional).

Product Information

| | |
|----------------------|---|
| SKU: | CAB5247 |
| Contents: | 20 μ L, 100 μ L Bradford Reagent: 1 vial (2ml) |
| Category: | Polyclonal Antibody |
| Synonyms: | SYNI, EPILX, MRX50, SYN1a, SYN1b, EPILX1, SYN1 |
| Clone: | - |
| Applications: | WB ELISA IF-P |
| Conjugation: | Unconjugated |
| Reactivity: | Human, Mouse, Rat |

Antibody Data

| | |
|-----------------------|-----------------------|
| Gene ID: | 6853 |
| Uniprot: | AB_2766078 |
| Host Species: | Rabbit |
| Purification: | Affinity purification |
| Observed MW: | 77kDa |
| Calculated MW: | 74kDa |

Preparation & Storage

Storage: Store at -20°C. Avoid freeze / thaw cycles. Buffer: PBS containing 50% glycerol, preserved with proclin300 or sodium azide (as specified on the Certificate of Analysis), pH 7.3.

Store Bradford Reagent at Room Temperature for 1 Year.

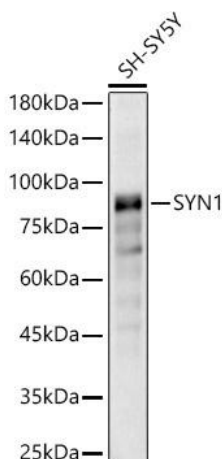
Positive Sample: SH-SY5Y

Recommended Dilutions:

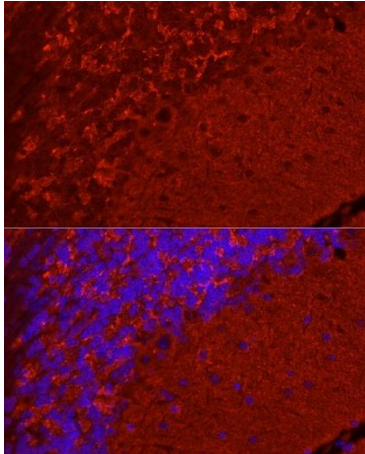
| | |
|--------------|---|
| WB | 1:500 - 1:1000 |
| IF-P | 1:50 - 1:200 |
| ELISA | Recommended starting concentration is 1 µg/mL. Please optimize the concentration based on your specific assay requirements. |

Protein Quantification (Optional): To quantify total protein levels, use the Bradford Reagent included in this kit. Visit <https://www.assaygenie.com/bradford-protein-assay-protocol/> to view the full protocol

Validation Data



Western blot analysis of lysates from SH-SY5Y cells, using Rabbit pAb (CAB5247) at 1:10000 dilution. Secondary antibody: HRP-conjugated Goat anti-Rabbit IgG (H+L) (CABS014) at 1:10000 dilution. Lysates/proteins: 25µg per lane. Blocking buffer: 3% nonfat dry milk in TBST. Detection: ECL Basic Kit (AbGn00020). Exposure time: 20s.



Immunofluorescence analysis of paraffin-embedded mouse brain using Rabbit pAb (CAB5247) at dilution of 1:50 (40x lens). Secondary antibody: Cy3-conjugated Goat anti-Rabbit IgG (H+L) (CABS007) at 1:500 dilution. Blue: DAPI for nuclear staining. Perform microwave antigen retrieval with 0.01 M citrate buffer (pH 6.0) prior to IF staining.