

LI Cadherin/Cadherin-17 Monoclonal Antibody

CAB5286

Description

This LI Cadherin/Cadherin-17 Monoclonal Antibody is supplied as a kit for advanced applications. The kit includes Bradford Reagent to quantify total protein concentration for accurate sample normalization (Optional).

Product Information

SKU:	CAB5286
Contents:	20 µL, 100 µL Bradford Reagent: 1 vial (2ml)
Category:	Monoclonal Antibody
Synonyms:	HPT1, CDH16, HPT-1, LI Cadherin/Cadherin-17
Clone:	ARC1989
Applications:	WB IHC-P ELISA IF-P
Conjugation:	Unconjugated
Reactivity:	Human, Mouse, Rat

Antibody Data

Gene ID:	1015
Uniprot:	AB_2863498
Host Species:	Rabbit
Purification:	Affinity purification
Observed MW:	120kDa
Calculated MW:	92kDa

Preparation & Storage

Storage: Store at -20°C. Avoid freeze / thaw cycles. Buffer: PBS containing 50% glycerol and 0.05% BSA, preserved with proclin300 or sodium azide (as specified on the Certificate of Analysis), pH 7.3.

Store Bradford Reagent at Room Temperature for 1 Year.

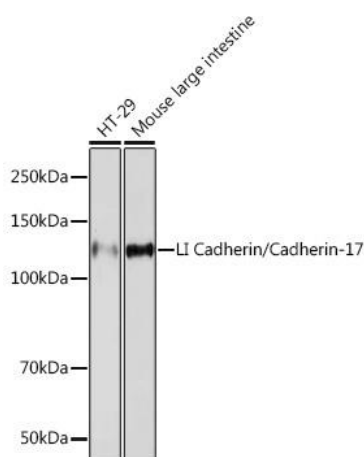
Positive Sample: HT-29 cells, Mouse large intestine

Recommended Dilutions:

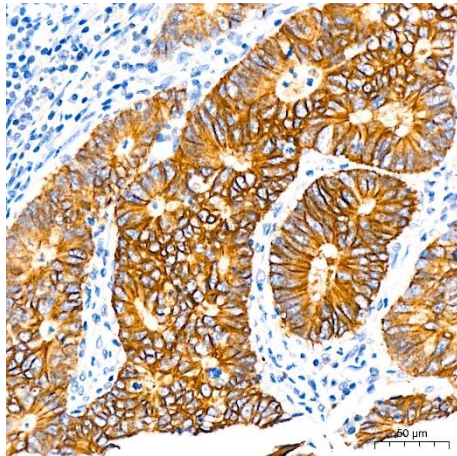
WB	1:1000 - 1:2000
IF-P	1:100 - 1:1000
IHC-P	1:200 - 1:2000
ELISA	Recommended starting concentration is 1 µg/mL. Please optimize the concentration based on your specific assay requirements.

Protein Quantification (Optional): To quantify total protein levels, use the Bradford Reagent included in this kit. Visit <https://www.assaygenie.com/bradford-protein-assay-protocol/> to view the full protocol

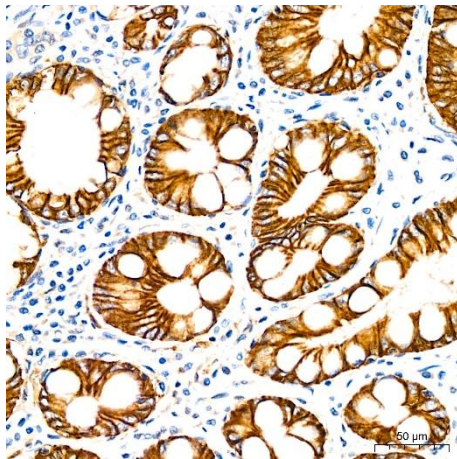
Validation Data



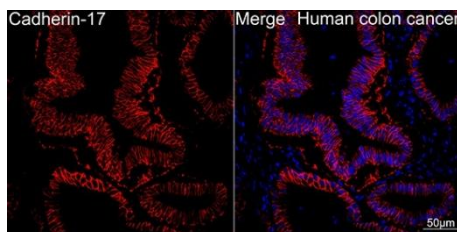
Western blot analysis of various lysates using LI Cadherin/Cadherin-17 Rabbit mAb (CAB5286) at 1:1000 dilution. Secondary antibody: HRP-conjugated Goat anti-Rabbit IgG (H+L) (CABS014) at 1:10000 dilution. Lysates/proteins: 25µg per lane. Blocking buffer: 3% nonfat dry milk in TBST. Detection: ECL Basic Kit (AbGn00020). Exposure time: 90s.



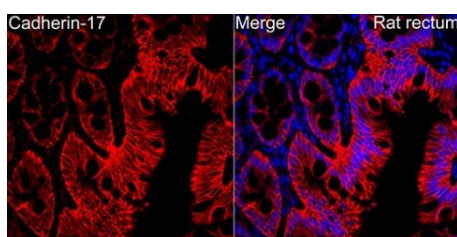
Immunohistochemistry analysis of paraffin-embedded Human gastric cancer using LI Cadherin/Cadherin-17 Rabbit mAb (CAB5286) at dilution of 1:200 (40x lens). High pressure antigen retrieval performed with 0.01M Tris/EDTA Buffer (pH 9.0) prior to IHC staining.



Immunohistochemistry analysis of paraffin-embedded Human stomach using LI Cadherin/Cadherin-17 Rabbit mAb (CAB5286) at dilution of 1:200 (40x lens). High pressure antigen retrieval performed with 0.01M Tris/EDTA Buffer (pH 9.0) prior to IHC staining.



Confocal imaging of Human colon cancer using LI Cadherin/Cadherin-17 Rabbit mAb (CAB5286, dilution 1:100) (Red). DAPI was used for nuclear staining (blue). Objective: 40x.



Immunofluorescence analysis of paraffin-embedded rat rectum using LI Cadherin/Cadherin-17 Rabbit mAb (CAB5286) at dilution of 1:100 (40x lens). Secondary antibody: Cy3-conjugated Goat anti-Rabbit IgG (H+L) (CABS007) at 1:500 dilution. Blue: DAPI for nuclear staining.