

## LCP1 Antibody

CAB5561

### Description

---

This LCP1 Antibody is supplied as a kit for advanced applications. The kit includes Bradford Reagent to quantify total protein concentration for accurate sample normalization (Optional).

### Product Information

---

<b>SKU:</b>	CAB5561
<b>Contents:</b>	20 µL, 100 µL Bradford Reagent: 1 vial (2ml)
<b>Category:</b>	Polyclonal Antibody
<b>Synonyms:</b>	LPL, CP64, PLS2, LC64P, HEL-S-37, L-PLASTIN, L-Plastin/LCP1
<b>Clone:</b>	-
<b>Applications:</b>	<span>WB</span> <span>IP</span> <span>ELISA</span>
<b>Conjugation:</b>	Unconjugated
<b>Reactivity:</b>	Human, Mouse

### Antibody Data

---

<b>Gene ID:</b>	3936
<b>Uniprot:</b>	AB_2766341
<b>Host Species:</b>	Rabbit
<b>Purification:</b>	Affinity purification
<b>Observed MW:</b>	70kDa
<b>Calculated MW:</b>	70kDa

## Preparation & Storage

**Storage:** Store at -20°C. Avoid freeze / thaw cycles. Buffer: PBS with 0.01% thimerosal, 50% glycerol, pH 7.3.

Store Bradford Reagent at Room Temperature for 1 Year.

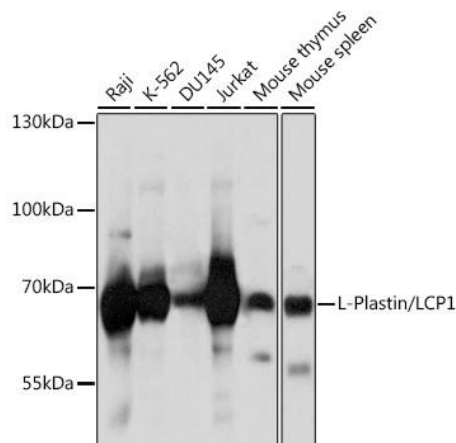
**Positive Sample:** Raji, K-562, DU145, Jurkat, Mouse thymus, Mouse spleen

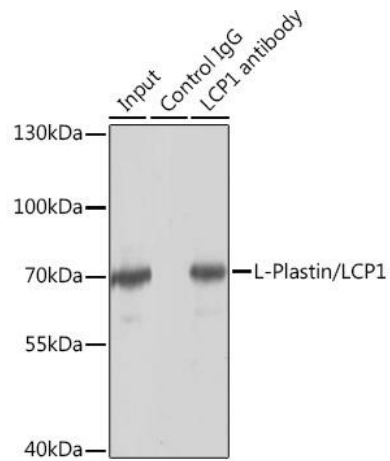
**Recommended Dilutions:**

<b>WB</b>	1:500 - 1:2000
<b>IP</b>	0.5µg-4µg antibody for 200µg-400µg extracts of whole cells
<b>ELISA</b>	Recommended starting concentration is 1 µg/mL. Please optimize the concentration based on your specific assay requirements.

**Protein Quantification (Optional):** To quantify total protein levels, use the Bradford Reagent included in this kit. Visit <https://www.assaygenie.com/bradford-protein-assay-protocol/> to view the full protocol

## Validation Data





Immunoprecipitation analysis of 150 µg extracts of Jurkat cells using 3 µg L-Plastin/ antibody (CAB5561). Western blot was performed from the immunoprecipitate using L-Plastin/ antibody (CAB5561) at a dilution of 1:1000.