

Ku80 Antibody

CAB5862

Description

This Ku80 Antibody is supplied as a kit for advanced applications. The kit includes Bradford Reagent to quantify total protein concentration for accurate sample normalization (Optional).

Product Information

SKU:	CAB5862
Contents:	20 µL, 100 µL Bradford Reagent: 1 vial (2ml)
Category:	Polyclonal Antibody
Synonyms:	KU80, KUB2, Ku86, NFIV, KARP1, KARP-1, Ku80
Clone:	-
Applications:	WB IHC-P IF/ICC IP ELISA
Conjugation:	Unconjugated
Reactivity:	Human, Mouse, Rat

Antibody Data

Gene ID:	7520
Uniprot:	AB_2766612
Host Species:	Rabbit
Purification:	Affinity purification
Observed MW:	86kDa
Calculated MW:	83kDa

Preparation & Storage

Storage: Store at -20°C. Avoid freeze / thaw cycles. Buffer: PBS containing 50% glycerol, preserved with proclin300 or sodium azide (as specified on the Certificate of Analysis), pH 7.3.

Store Bradford Reagent at Room Temperature for 1 Year.

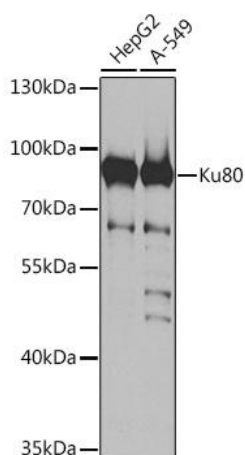
Positive Sample: A549, MCF7, Hep G2

Recommended Dilutions:

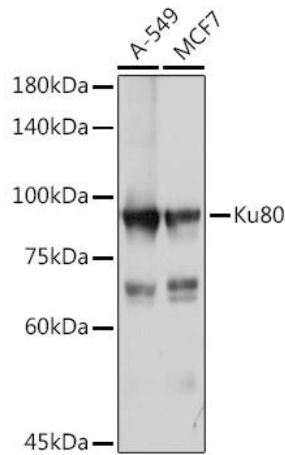
WB	1:500 - 1:5000
IP	0.5µg-4µg antibody for 200µg-400µg extracts of whole cells
IF/ICC	1:20 - 1:100
IHC-P	1:100 - 1:200
ELISA	Recommended starting concentration is 1 µg/mL. Please optimize the concentration based on your specific assay requirements.

Protein Quantification (Optional): To quantify total protein levels, use the Bradford Reagent included in this kit. Visit <https://www.assaygenie.com/bradford-protein-assay-protocol/> to view the full protocol

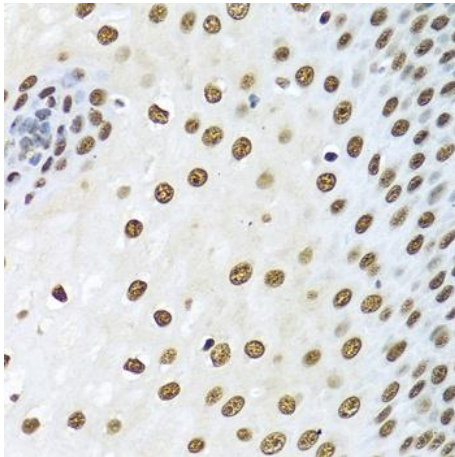
Validation Data



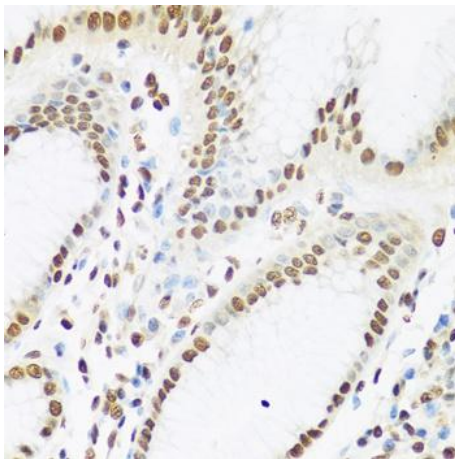
Western blot analysis of various lysates using Ku80 Rabbit pAb (CAB5862) at 1:1000 dilution. Secondary antibody: HRP-conjugated Goat anti-Rabbit IgG (H+L) (CABS014) at 1:10000 dilution. Lysates/proteins: 25µg per lane. Blocking buffer: 3% nonfat dry milk in TBST. Detection: ECL Basic Kit (AbGn00020). Exposure time: 15s.



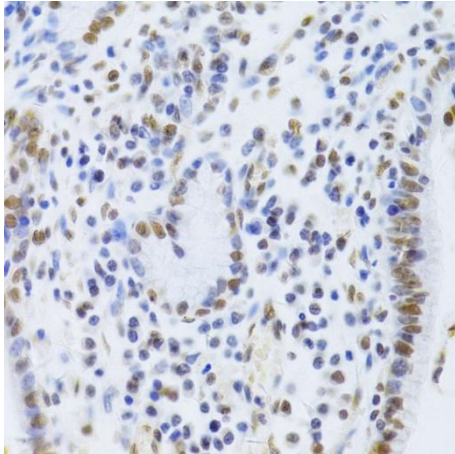
Western blot analysis of various lysates using Ku80 Rabbit pAb (CAB5862) at 1:1000 dilution. Secondary antibody: HRP-conjugated Goat anti-Rabbit IgG (H+L) (CABS014) at 1:10000 dilution. Lysates/proteins: 25µg per lane. Blocking buffer: 3% nonfat dry milk in TBST. Detection: ECL Basic Kit (AbGn00020). Exposure time: 10s.



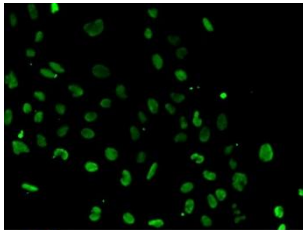
Immunohistochemistry analysis of paraffin-embedded Human esophagus using Ku80 Rabbit pAb (CAB5862) at dilution of 1:100 (40x lens). Microwave antigen retrieval performed with 0.01M PBS Buffer (pH 7.2) prior to IHC staining.



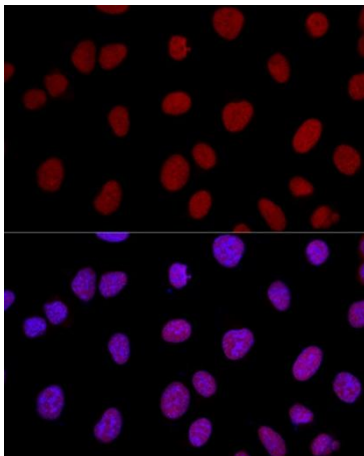
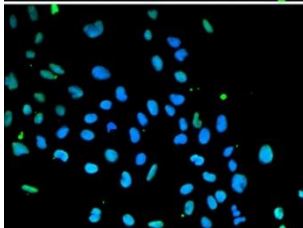
Immunohistochemistry analysis of paraffin-embedded Human stomach using Ku80 Rabbit pAb (CAB5862) at dilution of 1:100 (40x lens). Microwave antigen retrieval performed with 0.01M PBS Buffer (pH 7.2) prior to IHC staining.



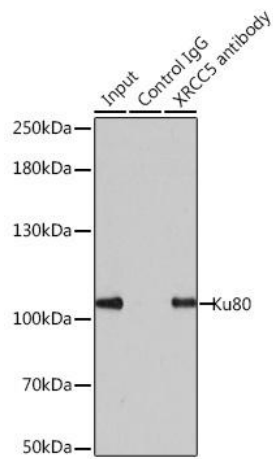
Immunohistochemistry analysis of paraffin-embedded Human gastric cancer using Ku80 Rabbit pAb (CAB5862) at dilution of 1:100 (40x lens). Microwave antigen retrieval performed with 0.01M PBS Buffer (pH 7.2) prior to IHC staining.



Immunofluorescence analysis of cells using Ku80 Rabbit pAb (CAB5862). Secondary antibody: Cy3-conjugated Goat anti-Rabbit IgG (H+L) (CABS007) at 1:500 dilution. Blue: DAPI for nuclear staining.



Confocal immunofluorescence analysis of U2OS cells using Ku80 Rabbit pAb (CAB5862) at dilution of 1:100. Blue: DAPI for nuclear staining.



Immunoprecipitation analysis of 200 μ g extracts of 293T cells using 1 μ g Ku80 antibody (CAB5862). Western blot was performed from the immunoprecipitate using Ku80 antibody (CAB5862) at a dilution of 1:1000.